

# MOUNT UNION

MOUNT UNION MAGAZINE | MOUNTUNION.EDU/MAGAZINE | #MOUNTUNION

FALL/WINTER  
2019



HELPING STUDENTS REACH THE

# FINISH LINE

Endowed scholarships enhance access to a Mount Union education



# Get Social with #MountUnion



# #BeExceptional

*The University of Mount Union prohibits discrimination on the basis of race, gender, gender identity or expression, sex, sexual orientation, religion, age, color, creed, national or ethnic origin, veteran status, marital or parental status, pregnancy, disability, or genetic information in student admissions, financial aid, educational or athletic programs, or employment as now or may hereafter be required by university policy and federal or state law. Inquiries regarding compliance may be directed to the Office of Human Resources, Beeghly Hall, (330) 829-6560, [goodle@mountunion.edu](mailto:goodle@mountunion.edu).*



**EDITOR**

Ryan Smith '14

**DESIGNERS**

Maddie Abrigg '20  
Melissa (Smith '98) Gardner  
Ryan Smith '14

**CONTRIBUTORS**

Dick Merriman  
Collin Quattro '23  
Emily Reckard '23  
Ryan Smith '14

**PHOTOGRAPHERS**

Mohammad Shaktra '20  
Cockrill's Studio  
Tom Stugmeyer '79  
Wanyu Zheng

**EDITORIAL BOARD**

Melissa (Smith '98) Gardner  
Gregory King '89  
Dick Merriman  
Ryan Smith '14  
Sherrie Wallace '09  
Audra (Lee '04) Youngen

Mount Union Magazine is published in the winter and summer by the University of Mount Union Office of Marketing, University of Mount Union, 1972 Clark Ave., Alliance, OH 44601 for its alumni and friends.

**2** **President's Message**

**3** **Talking Points**

**8** **Campaign Update**

**12** **First Look**

**20** **Exceptional Education**

**28** **Class Notes**

# PRESIDENT'S MESSAGE



The dedication of Oak Hall took place the Friday of Alumni Weekend and Homecoming as part of the launch of the public phase of the Inspiring Minds, Transforming Lives campaign. Read more on page 8.

Dear Friends,

Great things are happening at Mount Union!

During Alumni Weekend and Homecoming, campaign co-chairs Dr. Richard '72 and Cheryl (Brown '72) Drake shared the exciting news that commitments to the Inspiring Minds, Transforming Lives campaign had reached nearly \$34 million, almost 70 percent of the campaign's goal of \$50 million. Thanks to generous leadership commitments from trustees, alumni, friends, and organizations, we've made a strong start.

Most of the campaign's facilities funding goals have been met. That means we can now turn attention to securing essential gifts for the Mount Union Fund, current scholarships, endowed scholarships, and the Rescue Fund, which helps seniors get over the finish line, diploma in hand. It's fitting to focus on accessibility and affordability as our campaign goes public, and we seek the involvement of thousands of our alumni. Many of you have benefited from Mount Union's commitment to helping people from all walks of life achieve a higher education. Your participation in the campaign is essential. Please join in and help transform the lives of our students!

As Margot and I come to the end of our service to the University, we often speak with awe of the energy and loyalty of the University's students, faculty, administrators, staff, alumni, and friends. The momentum of our campaign and the sustained success of Mount Union are both rooted in the great spirit of the University's people.

We will always cherish the wonderful privilege of becoming part of the Mount Union community! We truly appreciated your warm welcome when we arrived and all you have done to encourage and support us. We look forward to the great things Mount will accomplish in the future, thanks to your generosity and loyalty.

Thanks for all you do for Mount Union!

Dick Merriman  
President, University of Mount Union

## TALKING POINTS

### MOUNT UNION PELL OPPORTUNITY GRANT INTRODUCED, AIDING IN BRIDGING FINANCIAL GAP FOR STUDENTS IN NEED

Mount Union continues to address college affordability and make its education accessible to students of all backgrounds by establishing the Mount Union Pell Opportunity Grant. This grant will bridge the entire gap between tuition costs and what families of modest financial means can afford to pay toward a college degree. After qualified students have tapped funds from the Federal Pell Grant and loan programs, Mount Union Pell Opportunity Grants will cover remaining financial needs to fully pay for the University's tuition and technology fee. To receive these grants, students must meet academic and family need criteria.

**"Our goal at the University is to extend educational opportunity to bright students from hardworking families. At present, a quarter of our students come from families with incomes under \$40,000. We want to make sure the school stays within reach of those students and their families."**

**-Dick Merriman  
President**

Beginning in the fall of 2020, the Mount Union Pell Opportunity Grant will be awarded to new, first-year students from Ohio and across the United States. Students eligible for the grant must have a high school GPA of 3.0 or higher, file the Free Application for Student Financial Aid (FAFSA) and be Pell eligible with a parent income of \$55,000 or less.

Mount Union has a rich history of serving Pell eligible students. In fact, the University was recently recognized as a Top Performer on Social Mobility among Midwest Regional Colleges by U.S. News and World Report, which measures how well institutions graduate students who received Federal Pell Grants (see page 4).

"With the total number of Pell Grant recipients increasing by seven percent nationally over the past decade and the high number of Pell eligible students that the University currently serves, it is essential for Mount Union to help lift the burden of debt carried by our most financially challenged students through the establishment of this grant," said Lindajeane Heller Western, vice president for enrollment management.

Learn more about the grant at [mountunion.edu/umu-pell](https://mountunion.edu/umu-pell).



Learn more about the program at [mountunion.edu/umu-mba](https://mountunion.edu/umu-mba).

### FULLY-ONLINE, SPECIALIZED MBA PROGRAM LAUNCHING AUGUST 2020

Mount Union is pleased to announce the addition of a fully-online Master of Business Administration (MBA) degree program, with concentrations in leadership and innovation and business analytics, to its academic offering beginning in August of 2020 following pending approvals from the Ohio Department of Education Higher Learning Commission.

Mount Union's MBA was uniquely designed and structured with the flexibility working professionals want and need. For those who are interested in career development but not looking for a complete MBA degree program, Mount Union offers five-course graduate certificates in the aforementioned concentrations.

The 36-credit-hour\* MBA degree program is presented in a six-week, non-cohort format that allows students to complete assignments and interact with professors on their own time. With three start dates in August, January, and May, students can start and stop the program at a time suitable for their schedules.

*\*Additional pre-requisites may be required*

## MOUNT UNION NAMED TO U.S. NEWS AND WORLD REPORT'S TOP COLLEGE, BEST VALUE, TOP PERFORMERS IN SOCIAL MOBILITY RANKINGS

For the 29th consecutive year, Mount Union has been recognized as a top college by U.S. News and World Report.

Mount Union was ranked 13th among Midwest Regional Colleges in U.S. News and World Report's 2020 Best Colleges rankings. The Midwest Regional category includes institutions from Illinois, Indiana, Iowa, Kansas, Michigan, Minnesota, Missouri, Nebraska, North Dakota, Ohio, South Dakota, and Wisconsin.

The institution was also ranked ninth for Best Value, which takes into account the ratio of quality to price, the percentage of undergraduates that receive need-based aid, and the total scholarship/need-based aid received by students.

In addition, Mount Union was ranked as a Top Performer on Social Mobility, which is a new ranking introduced by U.S. News and World Report for the 2020 rankings. The ranking

measures how well schools graduated students who received federal Pell Grants. Mount Union ranked in the top third of Midwest Regional Colleges for this ranking.

In response to the rankings, Mount Union President Dick Merriman stated, "We are very committed to helping hard-working students — including those from families of modest financial means — gain a valuable education and move ahead in careers and community leadership. It is gratifying to be recognized for our success in powering social mobility."

Mount Union holds numerous national rankings. The University has been included in Forbes' 2019 America's Best Colleges ranking and The Wall Street Journal/Times Higher Education College Rankings. Other citations have been garnered from Princeton Review's Guide to Green Colleges, College Factual, Niche, STARS, Arbor Day Foundation, and Sierra Club.

9<sup>th</sup>

U.S. NEWS AND WORLD REPORT RANKING FOR BEST VALUE AMONG MIDWEST REGIONAL COLLEGES

13<sup>th</sup>

U.S. NEWS AND WORLD REPORT RANKING FOR BEST COLLEGES IN THE MIDWEST



## M CLUB HALL OF FAME

The Mount Union varsity letter winners association inducted its 2019 Hall of Fame Class and gave special awards on November 1. The Hall of Fame class included: (front, l-r) Joe Libster '03 (men's tennis); Tiffany Hogle (Honorary M Club); Jill (Martin '92) Kistler (women's soccer); Jeff Gurney '95 (men's soccer); (back, l-r) Kyle Rodstrom '00 (men's track and field); Ken John '81 (men's track and field); Eddis Singleton '04 (men's swimming and diving); Brandon Smith '04 (men's swimming and diving); and Dr. Roger Palutis (Honorary M Club). Not pictured are Brian Wervey '97 (football), Dr. Michael McGrady (Honorary M Club), and Ed Warinner '84 (Duke Barret Award).

## HOMECOMING AWARD WINNERS

The 2019 Alumni Brunch welcomed back generations of alumni and featured an award ceremony honoring recipients for their work and dedication to the University. Award winners were (l-r): Len '69 and Lynda (Cailor '69) Slack (Dodie Davis Alumni Service Award), Laura Griffin '11 (Young Alumni Award), and Dr. Mark Himmelein, professor of German (McKinley Fellow Award).





## FOOTBALL PROGRAM, 2012 NATIONAL CHAMPIONSHIP TEAM, KEHRES '74 MAKE ESPN LISTS OF BEST PROGRAMS, TEAMS, AND COACHES OF THE PAST 150 YEARS

To celebrate the 150th season of college football, ESPN produced a list of the 50 best college football programs over the sport's 150 year history, and Mount Union is the highest non-Division I program at No. 16.

ESPN's Stats and Information Group came up with a metric with a goal to, "Honor the accomplishments of teams across 150 seasons and all divisions, while rewarding successful programs at the highest level in the sport's most competitive era."

Mount Union is ranked just between No. 15 Louisiana State University and No. 17 University of Miami (Fla.). The University of Alabama is ranked No. 1 with Notre Dame University, The Ohio State University, the University of Oklahoma, and the University of Southern California rounding out the top five.

The site said this about the Purple Raiders, "It's hard to argue with this level of success, even at Division III. The coach with the highest winning percentage in the history of the game, Larry Kehres, coached at Mount Union. Under Kehres, the Purple Raiders won 54 straight games, an NCAA record, lost one, then won 55 straight. Kehres retired

in 2012, but the Purple Raiders extended their string of Ohio Athletic Conference titles to 24 before falling short in 2016."

The 2012 Mount Union football team, which went 15-0 and won the team's 11th national title in College Football Hall of Famer Larry Kehres' '74 final game as head coach, is the only NCAA Division III team on ESPN's list of the 150 Greatest Teams. Kehres was also ranked 28th on ESPN's list of the 150 Greatest Coaches in College Football History.

The panel of 150 media members, athletic administrators, and former players and coaches selected these honors.

"The voters went for national champions galore — undefeated champions, one-loss champions and, at the very top, rarely tested champions. But not every team here finished No. 1. The highest-ranked one-loss team, at No. 31, is remembered for the game it didn't win," commented ESPN college football commentator Ivan Maisel. "The final list represents an array of styles but a commonality of substance, and the teams range from one that played 131 years ago to two squads that suited up as recently as 2018."



# RACHEL BOYCE LANG INTERNATIONAL CONCERT TOUR 2019

In 2006, the Rachel Boyce Lang Foundation generously established an endowed fund that reinstated Mount Union's International Concert Tour after nearly three decades of purely domestic travel. The Rachel Boyce Lang International Concert Tour fund sponsors, in part, a life-enriching global touring experience for Concert Choir members once every four years. The foundation has provided the lead gift for this tour; how-

ever, additional funds are needed to help defray the costs of transportation, publicity, lodging, and meals.

In June 2019, the tour went through Scotland with groups of alumni, friends, and family joining the Concert Choir for many of its performances. Locations included Glasgow, Edinburgh, and Mallaig throughout the 10-day trip.

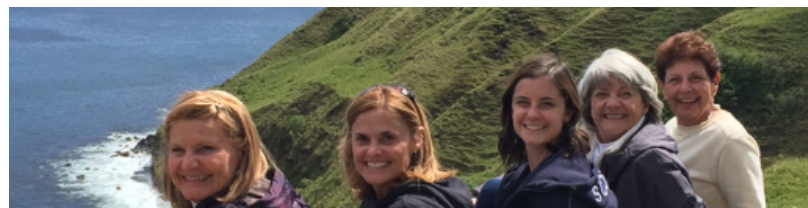
"Our trip to Scotland was the epitome of beauty! In short, our hard work was rewarded with seven thrilling performances and the opportunity to experience the unmatched splendor of this remarkable country. I would never have been able to have this life-changing experience without the opportunities provided by the University of Mount Union Concert Choir and the generous financial support of the Rachel Boyce Lang International Tour Endowment."

**-Elizabeth Domer '20 (right, far right)**



"Our trip to Scotland alongside the Mount Union Concert Choir was an adventure. I never knew Scotland had so much to offer! The scenery, the history, the bagpipers everywhere we went could not have been more fascinating. And the people in our group were so much fun! We were able to attend many of the choir's concerts and, of course, were blown away by their talent."

**-Ruthie Wheeler '76**



"Our family was able to attend the choir performances in absolutely beautiful churches, sail on Loch Ness, visit the Isle of Skye, and tour many more places. This experience that Mount Union and Dr. Cook are able to provide our students is definitely one to remember for both Kaitlyn and I!"

**-Connie Slezak, mother of Kaitlyn Slezak '20**



"What a joy to perform in some of the United Kingdom's most historically important, visually captivating, and spiritually inspiring churches and chapels. Singing in the Chapel Royal at Stirling Castle and the Greyfriars Kirk in Edinburgh, both adorned with crystalline and reverberant acoustics, was pure magic, indeed! In sum, the musical experience was transformative and its impact immeasurable. Beyond the performances was a wonderful array of educational excursions to castles, palaces, and museums; free time for shopping and sampling

the local cuisine; and myriad opportunities to drink in the rugged splendor of the natural landscape. Indeed, we have all been changed in ways that are unexplainable and unnamable. In the words of the Scottish writer Alastair McIntosh, our journey was 'a walk-through space and time, across a physical landscape and into a spiritual one.'"

**-Dr. Grant William Cook III  
Margaret Morgan Ramsey Professor in Music  
Director of Choral Activities**



**INSPIRING**  
m i n d s  
**TRANSFORMING LIVES**

**CAMPAIGN FOR MOUNT UNION**  
PUBLIC PHASE UNDERWAY  
[MOUNTUNION.EDU/INSPIRE](http://MOUNTUNION.EDU/INSPIRE)

**KICK-OFF**

During Alumni Weekend and Homecoming, the University of Mount Union officially announced the public phase of its “Inspiring Minds, Transforming Lives” campaign.

In conjunction with the Compass 2021 strategic plan, this five-year, \$50 million-dollar comprehensive campaign is an opportunity for the entire Mount Union community to come together to show their support for our students. There are several priorities of the campaign, and President Merriman believes that making a Mount Union education accessible to all students remains paramount, with a goal of \$25 million earmarked for student affordability.

Opportunity, innovation, and excellence – it’s what we need to impact the futures of our students for today and tomorrow.

**CAMPAIGN GOAL**

**\$10 MILLION EXCELLENCE**  
Facility, classroom, and lab enhancements

**\$7 MILLION INNOVATION**  
Academic and co-curricular programs

**\$8 MILLION MOUNT UNION FUND**  
Annual support for areas of immediate need

**\$25 MILLION OPPORTUNITY**  
Scholarships and financial assistance



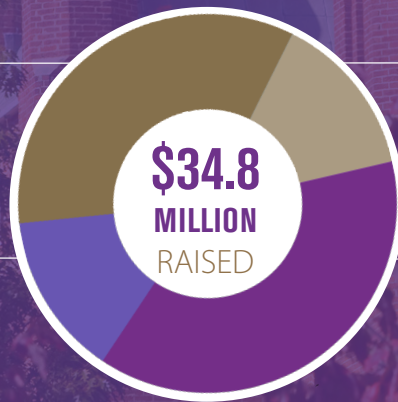
**CAMPAIGN PROGRESS**

**\$11.6 MILLION EXCELLENCE**

**\$4.8 MILLION INNOVATION**

**\$5 MILLION MOUNT UNION FUND**

**\$13.4 MILLION OPPORTUNITY**





# INSPIRING STUDENT SUCCESS

## THE MOUNT UNION FUND

The Mount Union Fund is a critical source of revenue that underwrites virtually every aspect of a Mount Union education. Because of the generosity of alumni, employees, parents, and friends who provide gifts to The Mount Union Fund each year, our students are able to enjoy an exceptional educational experience.

Your annual support ensures scholarships are awarded, books are given to deserving students, study abroad experiences are made possible, and state-of-the-art equipment is added to the classroom. Unrestricted in nature, every gift to The Mount Union Fund is utilized where it is needed most and supports the operating costs essential to building quality into every aspect of college life.

## CAMPAIGN CABINET

### Campaign Chairs

Richard '72 and Cheryl (Brown '72)  
Drake  
Richard and Sandra '81 Giese

### Honorary Chairs

Harold Kolenbrander  
John and Madge Peters  
Violet (Bica '44) Ross

### Campaign Cabinet

Roger Clay '61  
James Costanzo '84  
Matthew Darrah '84  
Dorothy Davis '62  
John Flynn '71  
Suzan Goris  
Allen Green '77  
Michael Jarrett '87  
Daniel Keller '72  
Laura Keller  
Stephen Kramer  
Gerard Mastroianni  
Michael Muffet '67  
Gretchen Schuler '96  
David Wolpert '69  
Debby (Betz '73) Wolpert

## CAMPAIGN PRIORITIES

### OPPORTUNITY

\$25 MILLION

Students need access to a Mount Union education. The generosity of our alumni and friends allows us to provide the scholarship support necessary to make the dream of attending Mount Union a reality.

#### Student Scholarships and Financial Assistance

- Merit-based and need-based scholarships and financial assistance

### INNOVATION

\$7 MILLION

Innovation is in Mount Union's DNA. Inventiveness with our curriculum, teaching pedagogies, and experiential opportunities will position the institution as a modern University committed to preparing leaders for an ever-evolving world.

#### Academic and Co-Curricular Programs

- Endowed academic programs, chairs, and professorships
- Annual and endowed support for experiential learning and leadership development
- Annual gifts to support academic programs

### EXCELLENCE

\$10 MILLION

Our students deserve every opportunity to succeed – while on campus and after graduation. We must provide them the modern facilities and current technology that will support and enhance their learning in their chosen fields and activities.

#### Facility Enhancements

- Kolenbrander-Harter Information Center transformation into a modern library
- Lab and classroom space for growing programs in engineering and business
- Upgraded athletic facilities for practice and competition
- Technology to support excellence in teaching and learning

### MOUNT UNION FUND

\$8 MILLION

The Mount Union Fund is utilized where it is needed most and supports the costs essential to providing an exceptional educational experience to our students.

# INSPIRING OPPORTUNITY

## SCHOLARSHIPS AND FINANCIAL ASSISTANCE

The cost of a college education and increasing student debt are in the national spotlight. Both are top concerns for today's families and pose significant obstacles for students seeking undergraduate and graduate degrees. Ensuring that hardworking families and students continue to have access to a Mount Union education is essential to fulfilling our mission to prepare students for fulfilling lives, meaningful work, and responsible citizenship.

## DESTINEE THOMPSON '20 English Major from Cleveland, Ohio

"A major reason I chose Mount was because it was the most affordable option. I knew I wanted a full college experience. Living on campus and being relatively far from home was important to me. Overall, Mount allowed me to do this. Scholarships offered a boost in making college a little bit more affordable for me."



## GIAN STEELE '21 Music Education Major from Dover, Ohio

"Without scholarships, my family would not have been able to afford an education for me at Mount Union. I am still very thankful to this day that I managed to receive these scholarships, and I strive to do my very best every day to maintain a good GPA in order to keep them."



## DONA MCCONNELL ABEL Friend of the University

"Nursing is a wonderful program with which I am very impressed. I hope my investment in Mount Union will inspire others to do the same."



## DR. ANNE CHRISTO-BAKER Chair of the Department of Business

"The risk management and insurance program equips students with skills that are important for protecting the financial stability of individuals and families as well as businesses. It is designed to prepare students for careers in for-profit and non-profit sectors."



# INSPIRING INNOVATION

## ACADEMIC AND CO-CURRICULAR PROGRAMS

We must remain committed to innovation in all forms, both in and out of the classroom. Mount Union's strength in the liberal arts and experiential learning uniquely positions the institution to deliver such an education – one that is greatly desired by today's employers. Classroom learning, practical opportunities, a diverse and inclusive environment, and the personal attention for which Mount Union is known provide an atmosphere that fosters leadership development, student growth, and alumni success.

## OAK HALL

The University's programs in business and engineering are growing, and they have outgrown Oak Hall within which they are housed. A dramatic addition of roughly 7,000 square feet will provide needed space for a large business classroom, collaboration area, and state-of-the-art engineering design studio-fabrication lab.



# INSPIRING EXCELLENCE

## FACILITY ENHANCEMENTS

Time and again, the University has risen to the challenge of change, and because Mount Union has remained nimble, it is strong, vital, and relevant in the 21<sup>st</sup> century. Continuing this history of excellence is paramount to ensure ongoing success in today's competitive higher education landscape. Thus, a strong commitment to exceptional quality across the board – from programs to facilities, and technology to engagement – will continue to foster an environment that is keenly focused on our students' future successes.

## CAPERS CENTER

Our athletic programs have been a source of great pride, and a vital part of Mount Union for many years. The Dom and Karen Capers Football Coaching Center, funded by a \$2 million gift from Dom and Karen Capers, will feature a team meeting and film room to foster communication and collaboration skills essential to student success.



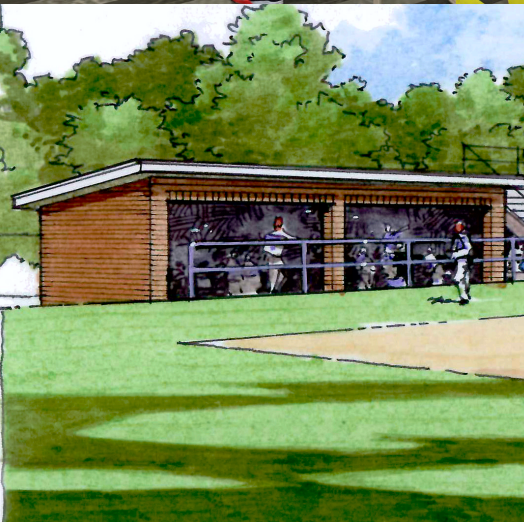
## KOLENBRANDER-HARTER

As we prepare students for success, it is imperative that we provide them with spaces that foster individual study, communication, and team work, while leveraging innovation and technology to do so. In addition, the Center for Student Success will be located on the first floor and will empower students in the strategic pursuit of their goals related to personal transition, self-discovery, academic progress and success, and career planning.



## RAFELD-ROGERS FIELD

While the Rafeld-Rogers turfed infield is a significant improvement, Mount Union's baseball and softball park simply does not measure up to the exceptional quality of our other athletic and campus facilities. In order to attract prospective student athletes and provide our current athletes with top-notch practice and game day facilities, we want to expand Rafeld Rogers Park to include a renovated press box, dugouts, and grandstands.





LET THE  
*Journey*  
BEGIN

# HELPING STUDENTS REACH THE FINISH LINE

Endowed scholarships enhance access to a Mount Union education

Every year, hundreds of students are welcomed to campus who are preparing to have their own unique experience. However, not all of them are able to complete the journey from signing the matriculation book to walking across the commencement stage due to financial circumstances, leaving aspirations unrealized.

Today, more students are able to realize their dreams thanks in large part to the generosity of alumni, faculty, and friends of the institution who endow scholarships to help make a Mount Union education more accessible. Whether they are specified based on program, geography, socioeconomic background, or financial hardship, endowed scholarships are imperative so that students can successfully complete their educational goals. The following stories highlight why donors feel compelled to give to generations of Mount Union students, and how grateful students are for their philanthropy.



## MARK AND SHARON INZETTA

### The Mark and Sharon Inzetta Endowed Scholarship

Although Mark and Sharon Inzetta are not Mount Union alumni, their sons Adam '09 and Richard '10 had impactful undergraduate experiences during their time on campus. Recognizing the influence that Mount Union had on the lives of their sons, the Inzettas continue to support the institution through meeting with students and creating The Mark and Sharon Inzetta Endowed Scholarship.

Mark, chief legal officer at Sbarro, and Sharon, nurse coordinator for The Gary B. and Pamela S. Williams Center for Breast Health at Summa Health, feel the community that was fostered by members and advisors of Alpha Tau Omega and the wrestling team helped create a positive environment for their sons.

“Balancing academics with being in the fraternity and participating in athletics gave them a core group of people from all

different backgrounds and really provided some of the best experiences they had,” Sharon said.

Mark and Sharon continue to have a presence on campus, as Sharon’s role at Summa Health makes it easy for her to be engaged with Mount Union’s nursing program. Both have participated in the Office of Alumni Engagement’s “Dinner with 12 Raiders” event that strengthens the connection between current students, alumni, and friends.

“We want to, in our own small way, give back to the University and make certain it continues providing the same experience to current and future students as it provided for Adam and Richard,” Mark said. “It was a great experience for them, and we want it to remain that way for others.”



# AIRIANNA CULLER '21

## Recipient of The Mark and Sharon Inzetta Endowed Scholarship

Airianna Culler '21, of North Canton, Ohio, had several offers to play softball from other schools, but ultimately chose Mount Union because it had more to offer her than just athletics.

Culler's initial plans were to play softball and study engineering, but those plans would soon change after an injury on the diamond prevented her softball career from moving forward. Once her injury healed, she decided to switch her major to exercise science and throw shot put and javelin for the track and field team.

Although the injury was a major setback to her plans, Culler explains that her failures, change of majors, and athletic switch only made her stronger.

"I learned that sometimes you have to fail to succeed," she said.

Culler goes on to say that this switch has only made her excited for her future and has taught her so much about herself and the things of which she is capable. She initially struggled with

being away from home and in a new environment, as well as the internal battle of seeing her perfectly laid plans go awry. This adversity helped her become a better person, proving she should never give up on herself.

Culler thanks the Inzettas and other donors because she could not have done it without them and their support. The Inzetta Scholarship is currently helping her with her long-term plan. Upon graduating, Culler hopes to attend graduate school to pursue a master's degree in occupational therapy. As a result of this scholarship, she is able to focus more on her academics and less about finances. With an extended academic plan, this scholarship is helping her focus more on her future goals.

The financial peace of mind has motivated Culler to continue her track and field career, as well as excel academically and explore her passions. She is grateful to family, friends, and donors for supporting and continually pushing her to achieve each step of her exciting new plan.





# JOHN '66 AND CARLA MCINTOSH

## The McIntosh Scholarship

When talking to John '66 and Carla McIntosh, it is easy to decipher that their passion for education runs deep.

Carla, a retired teacher with decades of service to Canton City Schools, still volunteers at Knox Elementary in Beloit, Ohio when she can. After a few decades of his own in education administration, John now supervises some of Mount Union's student teachers when they are in the field as a post-retirement opportunity.

Following in their footsteps, their daughter Danielle (McIntosh '01) Hawk has been teaching since she graduated from Mount Union and was recently hired as principal of Malvern Elementary School in Malvern, Ohio.

"I had an exceptional education at Mount Union that propelled me into my career immediately following graduation," Hawk said.

Suffice it to say that the McIntosh family cares about students' educational journeys. The Mount Union legacy they have created by endowing The McIntosh Scholarship is simply one way they give back to the institution.

"From my perspective as an educator and a parent, I've been around a lot of educational settings and I can say that few have the facilities, programming, and environment like Mount Union," John said. "The University has not stood still and is always exploring new programs to offer students so they can get employed when they graduate."

Though Carla is not an alumna of Mount Union, she still feels a connection to the institution through her family and community engagement.

"Danielle loved her time at Mount Union, and as a parent, that makes you feel proud to be part of this community," Carla said. "Students can get bogged down with debt, and we just want to help them finish their education for their future."

The McIntosh's want to lessen the financial burden of a college education for deserving students and their families so that this generation of students can create unique legacies of their own.

# MONICA HAINES '20

## Recipient of The McIntosh Scholarship

Like the McIntosh's, community is important to Monica Haines '20. When looking at her collegiate options, Haines visited 10 different institutions, but Mount always stood out at the top.

"I knew I wanted a smaller school, and there was a very welcoming community as soon as I stepped onto campus at Mount," Haines said. "It felt like home right from my first visit."

Haines, like countless others Purple Raiders, has made lifelong friends during her time at Mount Union and speaks glowingly about the support she has received from the faculty on campus, stating that she has "a support system around every corner."

Mount Union's Department of Education allows first-year students to sit in P-12 classrooms, where they discover which grade level they feel they would be best suited to teach.

"I found out pretty quickly that I didn't want to teach kids how to do 2+2, and I also didn't want to teach kids how to do calculus, so I found a nice medium in being a middle childhood teacher," Haines said.

A Massillon, Ohio native, Haines' community connections will grow even more by attending Mount Union and student teaching in the Louisville School District this upcoming spring. She has also experienced hands-on learning through peer mentoring and service-learning programs in the Alliance and surrounding communities.

Haines' positive experiences at Mount Union have resonated with her family as well, with her sister already accepted to enroll as a first-year student in fall of 2020. Without the support of the Mount Union community, the Haines family legacy at Mount Union might not have been possible.

"When you see that initial amount your first year, it is tough to believe you can afford to go to college," she said. "If it wasn't for scholarships like the one I received, a Mount Union education would not have been accessible."

"It's very helpful that people who have seen the impact that Mount has on them, or on their children, give back to help make this possible for current students, and I am grateful for that."





# JIM '73 AND PAM (RICHARDS '73) KIMBLE

## The Willard and Vivian Richards Scholarship

While living in The Last Frontier of Alaska, Pam (Richards '73) and Jim '73 Kimble have maintained a unique connection with Mount. From their time as undergraduates, to returning as faculty members, and seeing their children graduate from Mount Union as alumni, the Kimbles are the embodiment of the value of a Mount Union education.

“It was a huge privilege to come back as a faculty member and prepare teachers at Mount Union,” Pam said. “For me, it was a full circle that was beyond my imagination, and I still keep in touch with a lot of my former students.”

They endowed The Willard and Vivian Richards Scholarship, which is named in honor of Pam’s parents, who made financial sacrifices to help Pam and her sister attend college and achieve their goals.

“We want to be able to help Mount Union stay accessible to all students who want to attend, including the ones whose families think a Mount Union education is beyond their financial abilities,” Pam said. “I like to give back to the University so that other people

can do the same thing and pay it forward, because somebody paid ahead to help me.”

While a faculty member, Jim saw how important the Mount Union experience was to first-generation college students and wanted to help make sure those families were supported.

“To many families for whom Mount Union was a first experience with higher education, they are often challenged with resources,” Jim said. “The liberal arts experience, both in and out of professional programs at Mount Union, helps make better people, and I certainly want to support that.”

The Kimbles hope the next generation of Mount Union students embrace the institution as their own, just as it became theirs when they attended in the 1970s.

“You attach to Mount Union in different ways at different stages of your life, but no matter what, it’s great to be a part of Mount Union for the rest of your life,” Pam said.

# URGELA FIGARO '23

Recipient of The Willard and Vivian Richards Scholarship

Although she has only been on campus for a few months, Urgela Figaro '23 has already created a path for her future success.

The Uniontown, Ohio native knew of Mount Union and was referred to check out campus by her father. Ultimately, she chose to attend because of the welcoming atmosphere that has continued throughout her first semester.

“I like the vibe of the community here, and the people that I have met make Mount Union feel like a second home to me,” Figaro said.

Figaro is already active on campus through her involvement with the Black Student Union, and she has declared a major in international affairs and diplomacy, which she chose as a result of a desire to learn more about current global issues and possible solutions.

Along with The Willard and Vivian Richards Scholarship, Figaro is also a recipient of the Manzilla Multicultural Award and the Founder’s Scholarship, and she states that all three were instrumental in her decision to attend Mount Union.

## ENDOWMENT BY THE NUMBERS

303  
SCHOLARSHIPS

81  
AWARDS

27  
PROGRAMS

Read more in the Honor Roll of Investors on page HR-1.





The University of Mount Union is getting closer to its 175<sup>th</sup> anniversary, which is now less than two years away. While it is to be expected that much has changed on campus in nearly two centuries, present still are the principles brought forth by founder Orville Nelson Hartshorn.

As Mount Union strives to expand its curriculum in order to meet the demands of a modern workforce, it continues to provide the strong liberal arts foundation that has produced exceptional alumni since 1846.



Providing hands-on experiences since the institution's founding, Mount Union faculty members have been preparing leaders for generations. Professors such as the late Dr. William "Rocky" Rice (left, in the 1960s), professor of geology, and Dr. Kelsey (O'Driscoll '11) Scanlon (right), assistant professor of exercise science, illustrate that the student-centric approach has remained consistent over time.

Read on to discover just a few of the success stories of alumni and current students with similar academic passions.

Maddie Sofia '11 has been in the treetops of Olympic National Forest, spent time with NASA researchers, and simulated volcanic eruptions with scientists from around the world. However, one of her most ambitious endeavors to date is hosting Short Wave, the new daily science podcast from National Public Radio (NPR).

Her passion for science was relatively innate, in having a science teacher for a mother and a veterinarian for a grandfather. These surroundings allowed Sofia the chance to dissect a sheep's heart with her mother at the age of 14, an experience she jovially describes as a "pretty cool birthday present." She initially wanted to be a veterinarian, but Sofia's curiosity stretched beyond the cardiovascular when she began her undergraduate research career at Mount.

"The work that I did at Mount Union was on an amphibian disease, so I was still in the animal world, but I got to do research, and then I just fell in love with scientific research as a whole," Sofia said. "It was definitely my time at Mount Union,



**Maddie Sofia '11**

Host, "Short Wave"

B.S., Biology, University of Mount Union

Ph.D., Microbiology and Immunology,

University of Rochester School of Medicine and Dentistry

# NATURAL AND H

and professors like Dr. Brandon Sheafor and Dr. Kim Risley, that led me to my career path and the pursuit of a Ph.D."

That realization led Sofia to the University of Rochester School of Medicine and Dentistry, where she earned a Ph.D. in microbiology and immunology. While there, she had the crystalizing moment for her future as a science communicator.

"I was sitting in a talk and really having a hard time understanding what the presenter was talking about and feeling engaged by it," she said. "I remember thinking, 'If I am in this program, and I can't understand what my fellow classmates are talking about, how is anybody supposed to understand what we as a scientific community are doing?'"

Sofia knew she wanted to do something about that problem, so she decided to apply for an internship at NPR. From working as a producer on "Joe's Big Idea" to leading her own video series, "Maddie About Science," she has made her mark at one of the most recognized brands in media.

Four jam-packed years later, Sofia finds herself at the helm of a podcast that has the name and support of a network that boasts more than 23 million unique listeners every month, making it the top podcast network in the world according to 2019 Podtrac data.

She describes her quick career trajectory as "intense," but recognizes her fortune in getting to live her dream of bringing science to as many people as possible.

"It's a mixture of excitement and responsibility with a little bit of intimidation, but the team we have put together is amazing, and it's a really good show," Sofia said about her new venture.

Sofia remains very active in promoting science outside of her podcast and videos, as she, along with Joe Palca of "Joe's Big Idea," co-founded NPR Scicommers, a community of scientists and engineers with more than a thousand members across the country. She has also returned to Mount to speak with STEM students about effectively communicating scientific research.

"People ask me what I think is the best thing about Mount Union," Sofia said. "I tell them I had such an awesome relationship with my advisors, and when you're at a smaller school, you get that hands-on, one-on-one research experience you might not get elsewhere. For that reason alone, I try to stay as engaged as I can."

*Short Wave is available on Apple Podcasts and Spotify. Follow the conversation with Short Wave on Twitter with #NPRShortWave.*



Sofia describes Short Wave as, "Bringing a little science into your life every day in about 10 minutes through looking at everyday mysteries, new scientific discoveries, and telling human stories in a fun, accessible, and engaging way."



It was not until a call came from Suzy (Venet '98) Pietz, head coach of the Mount Union women's basketball team, that Sarah Turley '21 decided to make a visit to Mount Union. It was soon thereafter that the junior biochemistry major declared "love at first visit."

Although basketball is what brought Turley to campus, it is her passion for medicine that made her realize that Mount Union was the place that could help her reach her future goals.

"I knew that I wanted to go to med school after college, and Mount's biochemistry major had everything I needed to be prepared for graduate school and the MCAT test," Turley said. "The minute I saw the high-tech labs, I fell in love with the idea of everything I could be doing."

The idea she formed during her first glimpse of campus has since become a reality in a very unique way. Although all Mount Union biochemistry majors are required to participate



Sarah Turley '21  
Macedonia, Ohio  
B.S., Biochemistry,  
University of Mount Union

## HEALTH SCIENCES

in research their junior and senior years, Turley had the opportunity to get a head start in her sophomore year while working with her advisor, Dr. Keith Miller, associate professor of chemistry and biochemistry, on immunotherapy and cancer cell research.

"As a sophomore, I was already getting the chance to grow different cancer cell lines and analyze why macrophages are not consuming the cancer cells in a body," Turley said. "A lot of schools don't let you do research in this major that early, so it's a really cool opportunity."

Turley's research ambition proved rewarding outside of the lab, as her experience early in her collegiate career helped her earn a selection as one of 165 students across the country to be part of the Summer Pediatric Research Scholars Program at Akron Children's Hospital (ACH).

Thus, during the summer of 2019, she worked side-by-side with some of the best doctors in the nation, researching infectious disease treatment in pediatric patients for 10 weeks. Turley called her summer at ACH, "one of the most amazing experiences of my life."

Though she still has a few years left in her undergraduate career, Turley's experiences have her well on her way to her dream career of being a pediatric trauma physician. Although her academic prospects have her excited, her smile is never wider than when she talks about the support from the people

who have made Mount Union feel like home for the past few years. She is grateful to the faculty in her major and her team for their assistance in helping her create a network in her field.

"My advisor, coaches, and teammates provide unlimited support for me with preparation for interviews, study tables, and even bringing me food when I'm studying late at night," Turley said. "I think having that support system behind me, which continually tells me that I'm not doing this alone, has really helped get me to where I need to be."

"I have professors who come and cheer louder at my games than some of the parents. The people here care as much about your success and your life as you do."

- Sarah Turley '21

An illustrious career of 692 performances on the stage of The Metropolitan Opera might not have been the future of Eduardo Valdes '83 had it not been for Mount Union's International Concert Tour.

Valdes, a solo principal artist at The Met for 26 years, was intending to follow a career in medicine in his native Puerto Rico while using music as a therapy of sorts. He was part of a choir that volunteered to help the Mount Union Concert Choir while they were on tour in Puerto Rico in 1979 when he met Dr. Gordon Brock, who heard him sing and encouraged him to audition.

From that point on, Valdes knew that, with hard work, he could make his passion into a career. He offered his vocal and percussion talents to six different ensembles during his time on campus, while also performing in two theatre productions. That level of co-curricular involvement prepared him for the demands of his professional career while offering plenty of great opportunities.



**Eduardo Valdes '83**  
Principal Artist, The Metropolitan Opera  
B.M.E, University of Mount Union  
M.M., Cleveland Institute of Music,  
Case Western Reserve University

## ARTS AND H

“There are so, so many great memories it is hard to pick just one,” Valdes said. “Mount Union was the perfect environment for me, and you don’t often realize how special your experience was until you graduate and leave.”

Upon graduating, Valdes went on to earn a master’s degree from the Cleveland Institute of Music at Case Western Reserve University. He credits his Mount Union education as a foundation for success in a rigorous program.

Valdes believes that the arts are an integral component in helping students of all levels not only become more disciplined through frequent practice, but also express their creativity while pursuing other career paths.

“I would say that 75 percent of those on The Met’s Wall of Fame did not start out their lives thinking they would be opera

singers,” Valdes said. “They found this path because they had opportunities presented to them to realize their talent.”

Today, Valdes, who is on the Wall of Fame himself, is taking his experience on one of the world’s most prolific stages and passing it onto the next generation of performers.

“Not only am I working in one of the most important houses in the world, but I have had the best first-hand knowledge performing with some of the best in the world,” Valdes said. “There is a big shift happening in the art form, and I am happy that I have the experience I can pass along to other performers.”

Valdes’ goals for the future, beyond performing at The Met, include expanding his teaching through V-2 Studios (Valdes Voice Studios) in New York and leading masterclasses around the world, like those he gave to students on campus in 2016 and 2018.



“Mount Union was the perfect environment for me, and you don’t often realize how special your experience was until you graduate and leave.”

- Eduardo Valdes '83

Mark Bruns '22 is just a regular college student — except that his daily schedule is turned up to the maximum level. Instead of getting the “normal” college experience, Bruns chose to dive head first into multiple commitments on campus. On top of being a computer engineering major, which is a rigorous new program, he is also part of the Mount Union Concert Choir and the men’s volleyball team.

For Bruns, choosing the right university was no easy task. He knew he wanted to sing in a choir and also play volleyball at the collegiate level. Unfortunately, only a small number of universities offer men’s volleyball right now. With this limitation, being in choir can sometimes interfere with the volleyball schedule.

In order to keep up with everything on his plate, Bruns attributes his success so far to one simple thing: time management.

“Scheduling classes earlier on and getting work done in advance have helped me stay on top of everything so far,” Bruns



Mark Bruns '22

Columbus, Ohio

B.S., Computer Engineering

University of Mount Union

# HUMANITIES

said, “It’s all about time management. A lot of people fall into the habit of procrastinating and pushing things back. You just need to set goals and stick to them.”

When asked about being part of the recently introduced men’s volleyball team, which had its inaugural season in 2019, Bruns had nothing but praise. The chemistry on the team is “much better than other teams,” he said.

As a new team, there are no seniors. Since everyone is around the same age, he stated that everyone can build a strong connection with each other. Bruns has big expectations for himself and the rest of the team this year, as they look to build a winning culture in their second season as a program.

Bruns has also had to balance all of his commitments with traveling for choir and volleyball. When volleyball is in season from January through May, traveling for hours on end every week is guaranteed. In addition to this, he also had the opportunity to travel internationally with the choir, including a trip to Scotland in June.

His major, like the volleyball program, is also new. Mount Union’s computer engineering major is “tough, and has a lot of coursework,” according to Bruns. Many of the classes only have a select number of students in them, which has allowed him to make really close connections with his professors and his peers.

Though Bruns has joined many new programs and has many commitments to attend to, it hasn’t been easy to maintain balance. Through hard work and dedication, he has thrived during his time on campus.

Upon graduation from Mount Union, Bruns plans to attend graduate school. After that, he hopes to start a career in the computer engineering field.

*Read more about the Rachel Boyce Lang International Choir Tour on page 7.*

“Coach [Matt] Mihelic and Dr. [Grant] Cook got into contact and I was able to do both at the same time. I didn’t have the ability to do this anywhere else.”

- Mark Bruns '22

on balancing men’s volleyball and concert choir

Interested in business at a young age, William “Bill” Clark ’90 first heard of Mount Union and its business program through a college fair in his native Baltimore, Maryland. Once Dr. Hugh Jae told him about the internship opportunities that would be possible, he was sold on making the trip to Alliance.

When he got to campus, Clark gained classroom knowledge that provided a foundation for his future endeavors.

“Like with a lot of undergrads, gaining an awareness for the ins-and-outs of the business world was very helpful from the start through the course foundations,” Clark said.

Clark was supplementing his career preparation with unique extracurricular experiences. He was part of a group of students who worked to bring the Alpha Phi Alpha fraternity out of dormancy, and he describes the resulting reactivation as one of his favorite memories, creating a lifetime bond while on campus.

Getting career training where he least expected it, Clark also credits aspects of his current success to his time as president of the Black Student Union (BSU). He currently manages a staff of more than 20 people as director of government-wide acquisition policy and believes his time at the helm of BSU has helped inform his current leadership style.

“Now that I look back, there are things we accomplished in BSU that showed having leadership experience was not only important for my first job coming out of college, but also in my work today,” Clark said.



**William “Bill” Clark '90**  
Director of Government-wide Acquisition Policy,  
General Services Administration  
B.A., Business Administration, University of Mount Union  
M.B.A., Morgan State University

## APPLIED AND SO

Upon graduating with a degree in business administration, Clark’s initial job in asset management was not what he saw for his future. Thus, in wanting to stay in business, he decided to apply to the management trainee program within the federal government.

That program has led to a 20-plus year career in the government, with Clark working his way up to senior executive, a

“...there are things we accomplished in BSU that showed having leadership experience was not only important for my first job coming out of college, but also in my work today.”

1800 - William “Bill” Clark '90

position he has held for the past five years. The day-to-day responsibilities of his office include the important task of working with the Department of Defense and NASA in maintaining the Federal Acquisition Regulation, which governs the more than \$500 billion that federal agencies spend on products and services.

“The most rewarding part of my job is interacting with the public and making everything as clear and efficient as possible, knowing that there are a lot of regulations that people have to follow,” Clark said.

Clark’s advice to prospective students is to visit a campus to make sure the feeling and fit are right for the needs of each individual. For Mount Union students seeking business careers, his more important note was to be prepared.

“It is important for people to have as much experience as possible, even if it is not specifically job experience,” Clark said. “Employers are looking for proactive people with diverse backgrounds, and Mount Union provides that.”

Quinnlan Crowe '20 had been coming to Mount Union for years from her hometown of New Springfield, Ohio to compete in Junior Olympic volleyball. Her athletic prowess was noted by Fred Brickner, assistant track and field coach, and Crowe was then recruited to be a thrower on the track and field team.

Not entirely sure what her college experience would look like during her senior year of high school, she became enamored with the idea of attending Mount during an overnight visit.

“I instantly fell in love with the beautiful landscape, the welcoming team, and the ‘at home’ feeling I was experiencing,” Crowe said.

Although she still remains a top-10 finisher in shot put, discus, and javelin, Crowe’s level of activity in the classroom might be of a higher volume than on the field. The triple major in international business and economics, human resource management, and French also had the opportunity to study abroad in Pau, France in 2018.

“During my time abroad, I was able to travel to six different countries where I was constantly put out of my comfort zone,” Crowe said. “It was amazing to see how different people can live their lives.”

Crowe, whose favorite quote is, “Get comfortable with being uncomfortable,” has dived in head-first to activities



Quinnlan Crowe '20  
New Springfield, Ohio  
B.A., International Business and Economics,  
Human Resource Management, French  
University of Mount Union

## SOCIAL SCIENCES

both on and off campus to have a wide array of experiences upon graduating in May. She is a University Studies Abroad Consortium ambassador, career development assistant, and Society for Human Resource Management vice president, to name a few.

Regardless of her diverse collection of majors and co-curricular experiences, the Integrative Core has also provided her with opportunities to learn outside of her major, which she believes is essential for presenting the best version of oneself to a future employer.

“Mount Union has given me the courses that I need to succeed in human resources and international business, in addition to supporting and helping me through my entire study abroad experience, which has given me the fire to want to work abroad,” Crowe said.

As a result, Crowe’s ultimate goal is to be a global human resource manager for an international company and she is well on her way to, in her words, “...get out of the United States bubble and continue traveling and exploring the planet.”

“Mount Union has given me the courses that I need to succeed in human resources and international business, in addition to supporting and helping me through my entire study abroad experience.”

- Quinnlan Crowe '20

# CLASS NOTES

Class Notes to be included in the Spring/Summer 2020 Issue of *Mount Union Magazine* must be received before **April 30, 2020**.

Material for Class Notes is obtained through news passed along from alumni to the offices of Alumni Engagement, Advancement, and The Mount Union Fund. Notices sent by the Post Office are not printed in Class Notes. You may also submit your class note online at [mountunion.edu/alumni](http://mountunion.edu/alumni) or email [alumni@mountunion.edu](mailto:alumni@mountunion.edu). For non-digital Class Notes submissions, call (330) 823-2030.

## 1960s

**Dr. Robert McMaster '61** recently won a gold medal at the Huntsman World Seniors Games in St. George, Utah in the 80+ division. These games are attended by over 10,000 athletes from over 80 countries.



## 1970s

**Christine Allison '76**, the founder of A Chorus for a Cause, will be celebrating the company's 10<sup>th</sup> anniversary in September. Over the last 10 years, the company has benefitted 18 causes and has given away more than \$100,000 in ticket sales alone.

**Timothy McFadden '76** was named the volunteer of the year by the W.O. Smith Community Music School in Nashville, Tennessee. Tim has been on its board and council since 2002 and a volunteer guitar teacher for more than 10 years.

**Paula (Carter '71) and James '71 Orr, II** recently retired after long and fulfilling careers in education. Jim was named to

two high school Athletic Hall of Fames — Bishop Fenwick in Middletown, Ohio and West Forsyth High School in Cumming, Georgia — for coaching women's volleyball.

**Linda (Bennett '76) Schmidt** recently retired after a long career in nursing.

## 1980s

**Paul Andaloro '81** was featured in The Canton Repository after scoring a hole-in-one during successive nine-hole rounds on successive holes at Loyal Oak Golf Club and calculating the odds of doing so.

**R. Glen Hall '80**, senior PIM portfolio manager, has joined the Birmingham branch of Wells Fargo Advisors as managing director of investments.



**Susan (Spagno '84) Ramlo** finished her 25<sup>th</sup> year at The University of Akron, had her 50<sup>th</sup> refereed journal article published, and had her 100<sup>th</sup> refereed conference presentation accepted.

**Christine Rucci '87** recently published a book titled, "Too Phased." Copies are available in the University Store and on Amazon by going to [amazon.com/Too-Phased-Christine-Rucci/dp/1095155105](http://amazon.com/Too-Phased-Christine-Rucci/dp/1095155105).



## 1990s

**Toby Boyce '98**, president and broker of C.G. Boyce Real Estate Co., recently hosted a ribbon



cutting for a new location in Delaware, Ohio.

**Kristie (Holmes '98) and John Ray** announce the birth of a son, Jack, on January 21, 2017. Kristie is the director of marketing at Hines Atlantic Station in Atlanta. The couple resides in Kenesaw, Georgia.

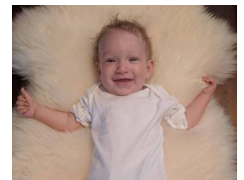
**Erica (Williamson '01) and Greg '99 Walker** announce the birth of a daughter, Francesca Joyce, on July 27, 2018. She joins siblings Josiah, 15, Samuel, 12, Elliott, 7, Micah, 5, and Tobias, 3.



**Kathy (Megyesi '99) Zarges** was awarded the Global Award for Outstanding Advising Administration for NACADA by The Global Community for Academic Advising.

## 2000s

**Abby and Bryson '08 Davis** announce the birth of a daughter, Grace, on October 29, 2018.



**Diane and Edward '06 Dick** announce the birth of a son, Edward Thomas, on April 25, 2019.

**Becky Edmiston '03** was promoted to professor of biology at Colorado Mountain College.

**Katie (Miklas '06) and Joel Sundeen**, announce the birth of a daughter, Kenna Lillian, on March 26, 2019.



## 2010s

**Jennifer (Blazey '11) and Brett Huss** were married July 15, 2017. The couple announces the birth



## ASSOCIATION MESSAGE

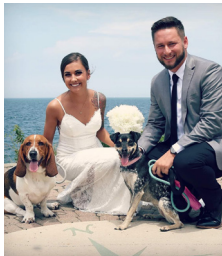
of their first child, Wyatt Hayden, on May 19, 2019.

**Stacy Cameron '15** studied coral reef ecology and the conservation of marine systems along the Great Barrier Reef in Australia during the summer of 2019. She is a high school science teacher at Green Local School District and resides in Uniontown, Ohio.

**Shannon Catanela '18** and **Jarrett Hylton '19** announce the birth of their daughter, Scarlett Grace on December 12, 2018.



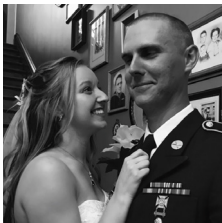
**Kristen (Hord) '15** and **Patrick Costanzo** were married on June 29, 2019. The couple resides in Cleveland, Ohio.



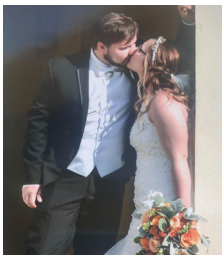
**Caelyn (Eppler) '17** and **John '14 Davis** announce the birth of a daughter, Reagan Laurette, on January 18, 2019. They currently reside in Seaside, California.



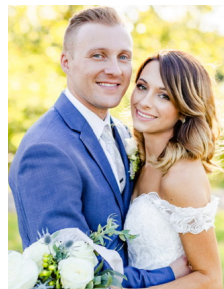
**Abby Honabarger '17** and **Spencer Fox '17** were married on July 2, 2018.



**Emily Ault '18** and **Tyler Gutierrez** were married on May 30, 2019 in Los Cabos, Mexico. The couple resides in Alliance, Ohio.



**Mackenzie Parsons '14** and **Austen Hutton '12** were married September 14, 2019.



**Alex Koehler '10** recently completed a 45-mile bike ride for Pelotonia, an organization and an event with one goal - ending cancer. Koehler raised nearly \$2,000 this year to fund cancer research.



Alumni Weekend and Homecoming 2019 fell on a picture-perfect October weekend. A fellow alum suggested the Stark County Convention and Visitors Bureau itself couldn't have asked for better.



The Board of Trustees, on which the president and vice president of the Alumni Association Executive Committee sit, met on Friday. In addition to the usual board oversight functions, we were also fortunate enough to attend the dedication ceremony of the newly named Oak Hall (née the Engineering and Business Building).

On a crisp Saturday morning, the strength of the marching band's practice clearly audible a mile down State Street, there was a large gathering of alumni for brunch and an awards ceremony. Fellow Alumni Association member Len Slack '69 and his wife Lynda (Cailor '69) received the Dodie Davis Alumni Service Award following a lovely introduction by their daughter-in-law and Mount Union alumnae Jennifer (Thurin '03) Slack, and Dean Davis (for she'll always be Dean Davis to the thousands of us who knew her way back when) attended, which made the recognition all the more meaningful.

Of note, and at the risk of burying the lede, Dr. Richard Drake '72 and his wife Cheryl (Brown '72) Drake kicked off Mount Union's \$50 million capital campaign, Inspiring Minds, Transforming Lives, with the inaugural run of an impressive video and by announcing an equally impressive \$34 million in contributions. The campaign will address a number of institutional needs, including scholarships and aid, so the University can better address issues of affordability. The video, along with the campaign's vision and goals, is available online at [mountunion.edu/inspire](http://mountunion.edu/inspire). Please visit, learn, and contribute.

Speaking of contributions, the 50<sup>th</sup> anniversary class of 1969 raised an epic (in the words of President Merriman) \$692,341. Witnessing large contributions on Publishers Clearing House-sized checks is a joyful event.

Alumni Association officers serve limited terms, two years as vice president and two years as president, and my term is closing. I am grateful to the Office of Alumni Engagement staff, particularly former directors Anne (Zimmer '95) Graffice and Tiffany Hogya, and current director Audra (Lee '04) Youngen, for their guidance, counsel, and support; to my predecessors Bill Shumacher '82 and Joel Sassa '78 for setting good examples, and to Chad Johnson '07, who will be next at the helm and who is responsible for much of our recent success.

P.S. On top of all the weekend victories, the weather, the fellowship, the fundraising, the football team brought home another victory. When I saw Dean Taylor with the sun shining at his back at his usual end zone post, I knew no other outcome was possible.

—Bob Kerr '89

Alumni Association President

# 2019 MOUNT UNION ALUMNI WEEKEND AND HOMECOMING





# WANT TO GET INVOLVED?



## Mount Union Alumni Association

The Alumni Association was officially organized in 1948. All alumni, and anyone who has attended Mount Union for at least one semester, are members of the Alumni Association. Its purpose is to promote interest in Mount Union through a variety of programs and is governed by the Alumni Association Executive Board.

Those interested in getting involved can visit [mountunion.edu/giving/engagement/volunteer](http://mountunion.edu/giving/engagement/volunteer) for more information.



M Club is the varsity letter-winner's association at Mount Union. A student athlete lettering in a varsity sport (men's or women's) at Mount Union is automatically a member of M Club upon graduation and may join the executive board. The following committees exist within the M Club organizational structure:

- **Nominations/Hall of Fame Committee**

Responsible for the review and selection of the prestigious M Club Hall of Fame award winners yearly.

- **Events Committee**

Coordinates social gatherings used to build camaraderie as well as raise funds for the support of student athletes. This committee meets monthly to continue the functionality of the group and develop programming to engage student-athlete alumni.

MOUNT UNION

Women

The Mount Union Women organization has been supporting the education of women at Mount Union for more than 85 years. The organization provides social opportunities for Mount Union graduates and friends and raises money for scholarships that are given to deserving female students.

Funds for scholarships come from donations, proceeds from working in the concession stand at home football games, and various fundraising activities conducted throughout the year.

For more information on how to get involved, or to make a donation to the scholarship fund, visit [mountunion-women.org](http://mountunion-women.org). You can also stay connected on the Mount Union Women Facebook page!

# ALUMNI AWARDS

*The highest awards bestowed upon alumni and friends by the institution*

## Now Accepting Nominations

Nominations are being accepted for the following awards. A description of each award is available online at [mountunion.edu/alumni-awards](http://mountunion.edu/alumni-awards).

**Dodie Davis Alumni Service Award**

**McKinley Fellow Award**

**Young Alumni Award**

**DEADLINE: May 1, 2020**

HOME COMING! **OCTOBER 10, 2020**

**Michelle (Bryan '12)** and **Josh Kosko** announce the birth of a daughter, Sophie, on November 1, 2019.



**Alicia Switzer '13** and **Kurt Nickels** were married on June 15, 2019.



**Mackenzie Shivers '16** and **Kyle Pavilonis '16** were married on September 1, 2019. Members of the wedding party included **Morgan Shivers '14**, **Eva (Laino '15) Rothermel**, **Rebecca Rector '17**, **Tony Mehle '16**, and **Jed Walsh '16**. The couple resides in Willoughby, Ohio.



**Kristyn (Clemence '12)** and **Kevin '13 Poltis** announce the birth of their son, **Koen Wesley**, born August 19, 2019.



**Jessica Ramsey '12** was recently named a **Mitch Daniels Leadership Fellow**. She is the senior assistant director of **Purdue Promise** at **Purdue University**.



**Kyle Roberts '14** and his wife **Jenna**, announce the birth of a daughter, **Charlie Thea**, on June 22, 2019.

## Friends

**Dr. Wesley Vesey**, professor of religion from 1963-1990, and his wife, **Phyllis**, now reside at **Willow Brook Christian Village** in **Delaware, Ohio**. Their address is **100 Willow Brook Way South, Apt. 3006, Delaware, OH 43015**.

## Deaths

### 1940s

**Richard Berry '49** of **Naples, Florida** passed away July 15, 2019.

**Mary (Douglas '49) Hale** of **Granville, Ohio** passed away September 24, 2019.

**Richard Leffler, Sr. '49** of **Massillon, Ohio** passed away September 13, 2019.

**Jean (Stout '44) Leggett** of **Lake Ridge, Virginia**, passed away July 29, 2019.

**Elizabeth (Hitchcock '43) Steineman** of **Sandusky, Ohio** passed away May 2, 2019.

**Warren Strub '49** of **Akron, Ohio** passed away September 20, 2019.

**Charles Unger '49** of **Canton, Ohio** passed away September 13, 2019. Charles was preceded in death by his spouse **Martha (Lutz '48) Unger**.

### 1950s

**William Abrams '52** of **Alliance, Ohio** passed away May 11, 2019.

**Joanne (Cole '52) Bhatta** of **Naples, Florida** passed away May 15, 2019.

**William "Bill" Bowman '56** of **Alliance, Ohio** passed away October 20, 2019.

**Beverly (Neff '54) Connor** of **Morehead City, North Carolina** and **Pittsfield, Massachusetts** passed away August 1, 2019. She was preceded in death by her spouse **James Connor '54**.

**Irene (Waniga '55) Dawson** of **McCroary, Arkansas** passed away October 7, 2019.

**Harry "Sonny" Geltz '50** of **Alliance, Ohio** passed away May 11, 2019. During his time at **Mount Union**, **Sonny** played football for his father, the late **Harry Geltz 1919**.

**Kenneth Greewalt '56** of **Strongsville, Ohio** passed away June 29, 2019.

**JoAnne (Trimbur '53) Humbert** of **Cleveland, Ohio** passed away May 1, 2019.

**Jack Huntsberger '52** of **Chesterland, Ohio**, husband of **Carolyn (Krabill '53) Huntsberger**, passed away May 4, 2019.

**Marc Warren Janser '50** of **Hazel Crest, Illinois** passed away February 21, 2019.

**Richard Koons '56** of **Canton, Ohio** passed away May 14, 2019.

**Joyce (Glover '59) Krahling** of **Alfred, Maine** passed away May 5, 2019.

**Thomas Lautenschlager '55** of **Canal Fulton, Ohio** passed away September 12, 2019.

**Don McAlister '50** of **Alliance, Ohio** passed away May 5, 2019.

**Sarah (Dimit '51) Ramsey** of **New Bern, South Carolina**, spouse of **Robert Ramsey '50**, passed away September 15, 2019.

**Mary (Banfield '56) Reigle** of **Port Clinton, Ohio** passed away August 29, 2019.

**Paul Rosia '52** of **Clear Brook, Virginia** passed away June 5, 2019.

**Ruth (Martin '54) Shafer** of **Salem, Ohio**, spouse of **H. Gene Shafer '51**, passed away October 1, 2019.

**Shelia (Krause '55) Speidel** of **Bedford, Massachusetts** passed away June 28, 2019.

**Wilbert Winold '50** of **Westlake, Ohio** passed away July 25, 2019.

**Wayne Zeides '57** of **Alliance, Ohio** passed away August 8, 2019.

### 1960s

**Thomas "Tim" Barnhouse '62** of **Alliance, Ohio** passed away September 12, 2019.

**Leah (Nile '61) Berlin** of **Livingston, Texas** passed away October 10, 2019.

**Craig Carney '67** of Uniontown, Ohio, spouse of **Nancy (Keeler '67) Carney**, passed away August 23, 2019.

**Lynn (Daniels '65) Dezenzo** of Alliance, Ohio passed away October 6, 2019.

**Kenneth Drake '69** of Snyder, New York passed away August 7, 2019.

**Richard Emerson '64** of Petoskey, Michigan passed away May 11, 2019.

**Richard Goldner '60** of Canton, Ohio, spouse of **Mary Alice (Juergens '60) Goldner**, passed away October 12, 2019.

**George Good, Sr. '61** of Baltimore, Maryland passed away July 9, 2019.

**Judith (Watson '61) Grandy** of Sharpsville, Pennsylvania passed away September 9, 2019.

**James Hodder '64** of Pittsburgh, Pennsylvania passed away May 9, 2019.

**Robert Holmes '69** of Havre De Grace, Maryland passed away September 17, 2019.

**John Kitzmiller '65** of Willoughby, Ohio passed away August 7, 2019. John was the spouse of **Norma (Rowe '65) Kitzmiller** and father of **Scott '98** and **Jeff Kitzmiller**.

**George Newton '61** of Oklahoma City, Oklahoma passed away July 3, 2019.

**Kendra (Downing '62) Rightsell** of Elkins, West Virginia passed away May 1, 2019.

**Ralph Shaw, Jr. '60** of Oberlin, Ohio passed away September 22, 2019.

**Connie (Stromp '63) Stanforth** of Athens, Ohio passed away June 11, 2019.

**Patricia "Pat" (Loudon '61) Thompson** of Bradenton, Florida passed away September 13, 2019.

## 1970s

**Diane Kaye (Fitzsimmons '73) Clapsaddle** of Lisbon, Ohio, passed away August 2, 2019.

**Sherdina (Tillman '75) Collins** of Ashtabula, Ohio passed away July 2, 2019.

**Meta Culler '78** of Salem, Ohio passed away May 5, 2019.

**Patricia (Wachsman '70) Libis** of Stow, Ohio passed away December 26, 2018.

**Nancy (Day '70) Pinney** of Lake Lure, North Carolina passed away August 4, 2019. Nancy was the spouse of retired professor **Hugh Pinney** and mother of **Debra (Pinney '76) Warren**, **Jeffrey '79 Pinney**, and **Todd Pinney**.

**Tracey Strain '70** of Highlands, North Carolina passed away September 11, 2019.

## 1980s

**Dina Maurer '82** of North Canton, Ohio passed away March 17, 2019.

## 1990s

**Richard Myers '90** of Tuscon, Arizona passed away in August of 2018.

## 2000s

**Cynthia (Green '07) Robinson** of McDonald, Ohio passed away June 18, 2019.

## 2010s

**Amanda Manley '13** of Wooster, Ohio passed away September 5, 2019.

## Friends

**James Boyce** of East Canton, Ohio passed away June 27, 2019.

**Gerry Durenda** of Alliance, Ohio passed away August 1, 2019.

**Larry Graff** of Houston, Texas passed away July 22, 2019.

**William Hardman**, of Nokomis, Florida passed away May 3, 2019.

**Maxine (Merriman) Hayes** of Wooster, Ohio, spouse of **Dwight Hayes '46** and

grandmother of **Sarah (Hayes '12) Callychurn**, passed away April 1, 2019.

**William Sharp** of Hernando, Florida passed away April 16, 2019.

**Charles Stallard** of Mansfield, Ohio passed away August 16, 2019.

**Lon Strabala** of Ravenna, Ohio passed away May 20, 2019.

**John Walter** of Allison Park, Pennsylvania, spouse of **Marilyn (Potts '57) Walter**, passed away January 15, 2019.

**William "Bill" Willis** of Alliance, Ohio passed away May 31, 2019.

**Marcella "Sally" Wilson** of Greenwood, South Carolina passed away June 1, 2019. Marcella was preceded in death by her spouse **Carl Wilson '49**.

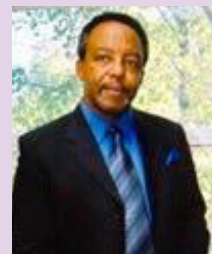
**Fred Zagotti, Sr.** passed away May 27, 2019.

## Thomas Ron Hoyt '67

**Thomas Ron Hoyt '67** of New Concord, Ohio passed away June 7, 2019. Ron was a two-time all OAC basketball player and head coach of men's basketball and men's golf from 1989-1992.

## Dr. James Walton

Dr. James Walton of Fresno, California passed away on August 15, 2019. Walton was the first African-American male faculty member at Mount



Union, where he taught in the Departments of English, Education, and History in his 20 years with the institution. He was selected as the recipient of the Great Teacher Award in 1989.

Walton was also the first faculty member to serve as coordinator of Fresno State University's Africana Studies program, where he taught from 1990-2018.

# Upcoming Alumni Events



## January 9 • Arizona Alumni Gathering

Four Peaks Grill and Tap, 15745 N. Hayden Road  
Scottsdale, Arizona

## February 8 • Curling 101

Mayfield Curling Club, 1545 Sheridan Rd., South Euclid, OH

## February Florida Alumni Gatherings

February 19 | Naples | Kolesar-Gonzalez Home, 16491 Felicita Court, Naples, FL

February 20 | Sarasota | Marina Jack, 2 Marina Plaza, Sarasota, FL

## February 22 • Kalahari Indoor Waterpark

Take the family to Sandusky and enjoy discounted room rates to melt away the winter blues.

## April 2 • Schooler Lecture

Ana Navarro and Donna Brazile, political strategists  
8 p.m., Timken Gymnasium,  
McPherson Academic and Athletic Complex

## April 7 • Raiders Give

## April 28 • SCHOLAR Day

## May 15 • Class of 1970 50th Reunion

Complete schedule will be available online soon!

Like **connecting** with alumni?  
Enjoy hearing the latest **news**?  
Appreciate learning about upcoming **events**?



Like us on Facebook!  
[facebook.com/mountunionalumni](https://facebook.com/mountunionalumni)



Follow us on Twitter!  
[twitter.com/mountunionalum](https://twitter.com/mountunionalum)

# Alumni Gatherings



A group of seven classmates met in November in Elkhart, Indiana. The group is comprised of (l-r) Kay (Norton '70) Hettler, Ric '67 and Cathie (Franks '69) Johnson, Dick '68 and Judy (Jones '69) McLaughlin, and Barb (Wainwright '69) and John '68 Armitage.



Several alumni were on hand at a gala celebrating 100 Years of the Rotary Club of Jamestown, New York. Pictured at the Chataqua Lake gathering are Tori (Peterson '01) and Adam '01 Irgang, Megan (Malinowski '99) and John '04 Sixbey, and Betsy (Myott '06) Healy.



ABOVE (l-r): The group consisting of Stephanie (Boehm '99) Albright, Missy (Johnson '99) Timko, the late Darcy (Thorne '99) Leonard, Cara (Olsen '99) Robson, and (front) Brittany (Matejka '99) Golden have gotten together every year since graduating. Their gatherings include annual weekends with their families and trips across the country, like their most recent trip to Chicago in July, pictured on the bottom.



Members of Mount Union Women, which celebrated its 85th anniversary this year, met for a craft and sip event. They were (front, l-r) Desiree (Shundry '05) Dennis, Sarah (Powell '06) Sears, Kaitlynn Knowles, Sarah (Buckel '10) Davis, Kris Kunkel, Joy (Kunkel '84) Banish; (back, l-r) Jamie McMillen '03, Libby (Snyder '06) Bulso, Lindsey (Buckel '06) Szymanski, and Deana Allen '00.

**6-WEEK**  
COURSE STRUCTURE

emphasizing one class  
at a time

**\$595**

PER CREDIT HOUR

for the 2019-2020  
academic year

**3 STARTS**  
PER ACADEMIC YEAR

in May, August,  
and January

# ONLINE MASTER OF EDUCATION DEGREE

ATHLETIC COACHING | CURRICULUM AND INSTRUCTION | EDUCATIONAL LEADERSHIP | OHIO PRINCIPAL LICENSURE

## ONLINE MASTER OF EDUCATION

The University of Mount Union's online Master of Education (M.Ed.) combines a relevant, robust, and engaging curriculum with the flexibility and convenience working professionals require. Concentrations in athletic coaching, curriculum and instruction, educational leadership, and Ohio principal licensure allow professionals to advance their careers while customizing their education to meet their specific interests and goals.

### A flexible online M.Ed. program tailored to fit you!

- Accredited two-year program offering four concentrations
- Flexible, project-based internship opportunities
- 30 credit-hour program | 36 credit-hours for the Ohio principal licensure concentration

## ATHLETIC COACHING

Through a curriculum designed to develop coaches as stronger leaders, motivators, and communicators, graduates will be primed to advance their careers in athletics at all levels.

[mountunion.edu/athletic-coaching](http://mountunion.edu/athletic-coaching)

## CURRICULUM AND INSTRUCTION

Develop your skills in curricular and instructional design, delivery, and assessment, and make a meaningful impact in your school.

[mountunion.edu/curriculum-and-instruction](http://mountunion.edu/curriculum-and-instruction)

## EDUCATIONAL LEADERSHIP

Get true exposure to leadership, organizational change, and school culture through a curriculum designed to develop teacher leaders that drive positive change.

[mountunion.edu/educational-leadership](http://mountunion.edu/educational-leadership)

## OHIO PRINCIPAL LICENSURE

For Ohio teaching professionals, the combination of an engaging curriculum and relevant, hands-on work inside your school will prepare you to sit for the Ohio Principal's License exam and advance your career into administrative leadership positions such as a principal or district administrator.

[mountunion.edu/ohio-principal-licensure](http://mountunion.edu/ohio-principal-licensure)

"The greatest thing about the program for me, aside from the great professors, community feel and flexible learning, is that my mindset was transformed."

-Trenessa Wood M'15

Assistant Principal, Canton City Schools

# Dave '69 and Debbie (Betz '73) Wolpert

Dave '69 and Debby (Betz '73) Wolpert are inspiring minds and transforming lives at the University of Mount Union. Inspired themselves by their positive interactions with students and their ever-growing love for Mount, the Wolperts give generously in support of numerous special projects and initiatives on campus.

The couple has spent more than 40 years investing in Mount Union students. Their post-graduate involvement began as head residents in McCready Hall in the late '70s. Over the years, they have continued to stay connected by attending athletic games, theatre productions, choir concerts, and more. To this day, you can find them working out side-by-side with students in the MAAC throughout the week.

For the Wolperts, it always comes back to the students.

“The main reason we stay involved on campus and give financially is because of the students,” Debby said. “As alumni, we are incredibly proud of the young people at Mount. They continue to give us so much joy that we want to do as much as we can to help them succeed.”

In addition to their support for The Mount Union Fund, the President's Rescue Fund, M Club, and the Mount Union Stadium renovation project, Dave and Debby have established the Wolpert Family Scholarship. With a special passion



for making Mount Union more affordable for students of all backgrounds, they recently decided to make an even more substantial philanthropic investment in their scholarship with an added estate commitment as part of the Inspiring Minds, Transforming Lives campaign, for which they serve as campaign cabinet members and volunteers.

“Throughout the years, we’ve supported many projects, but our main focus has always remained with our endowed family scholarship because of the lasting benefits it will have,” Dave said. “It’s very rewarding knowing that future students will continue to benefit from our gift for many years to come.”

The Wolperts have created a legacy of their own that will benefit students now and long into the future.

***There are so many ways you, too, can make a lasting difference at Mount Union. For more information, contact The Office of University Advancement at (800) 992-6682, ext. 2286 or [advancement@mountunion.edu](mailto:advancement@mountunion.edu).***



THE MOUNT UNION  
Fund



“Without donor support and the scholarships I received, I wouldn’t be here at Mount Union. Because of you, I get to experience our beautiful campus and all it has to offer, learn from amazing faculty members who have changed my life, and build lasting connections with other quality students seeking an exceptional education. I am forever grateful for your generosity!”

*Sarai Bodine '20*

ENGLISH MAJOR

ADOLESCENCE TO YOUNG ADULT EDUCATION MINOR

SALEM, OH

*Your gift is an investment in the future of students like Sarai.*

GIVING.MOUNTUNION.EDU



**mountunion.edu**

1972 Clark Ave.  
Alliance, OH 44601

# Refer a FUTURE RAIDER

Encourage college-bound students to visit campus or help us reach out to them at  
[admission.mountunion.edu/register/refer-a-student](https://admission.mountunion.edu/register/refer-a-student)



Academic Achievement Dinners	2/13, 2/20, 2/27	VPA Visits	3/27, 4/17
Engineering Visit	3/17	Schooler Lecture Visit	4/2
Nursing Visit	3/19	Spring Visit	4/25
Admitted Student Day	3/20	More info <a href="https://mountunion.edu/visit-campus">mountunion.edu/visit-campus</a>	



# HONOR ROLL OF INVESTORS

2018-2019

It is with great pride and appreciation that I provide Mount Union's annual Honor Roll of Investors recognizing the unwavering support of our alumni, friends, faculty, staff, parents, and students from the 2018-2019 academic year. As you turn the pages before you, you will see the names of fellow community members who have compassionately given of their time, talent, and financial resources in support of Mount Union's mission to prepare students for fulfilling lives, meaningful work, and responsible citizenship.



For the past couple of years, the Office of Advancement, along with other members of the campus community, have been diligently committed to raising additional support for the University's comprehensive campaign, Inspiring Minds, Transforming Lives. This campaign largely addresses Mount Union's top priority – affordability – ensuring that every deserving student has the opportunity to pursue a Mount Union education, no matter their background. Along with our dedication to expanding scholarship opportunities, we are committed to enhancing our high-quality academic programs, while introducing additional areas of study to meet the growing interest of our diverse student body.

The generosity of our Mount Union family is the foundation of everything we do. Because of your investments, Mount Union continues to thrive by providing opportunities of exceptional value. Our state-of-the-art learning spaces promote innovation and collaboration, while we continue to nurture community and personal growth in other areas among the next generation of leaders.

I am inspired by your loyalty to Mount Union and wish to express my sincere appreciation for your commitment. It is with philanthropic partners like you that we can continue to inspire minds and transform lives.

Sincerely,

Gregory L. King  
Vice President for University Advancement

## INSIDE

- Leadership Giving ..... HR-2
- Diamond Circle..... HR-3
- Endowed Funds..... HR-4
- Heritage Society..... HR-12
- Forever Mount Society ..... HR-13
- The Mount Union Fund..... HR-16
- Alumni and Friends..... HR-18
- Volunteers..... HR-28

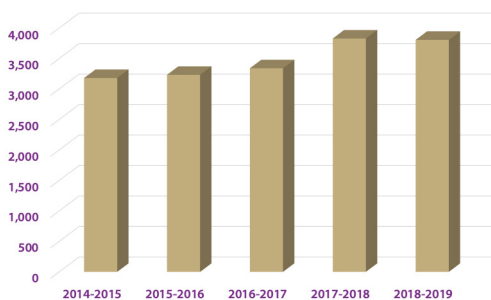


*Dr. Kenneth and Mrs. Grace (Bird) Chalker '71 lead by example and, because of their generosity and dedication, Mount Union students are provided the opportunity to excel academically and achieve success well beyond their time here on campus.*

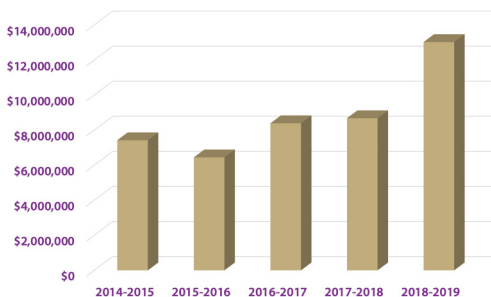
# LEADERSHIP GIVING

Leadership giving includes alumni and friends who have made gifts in the Fiscal Year 2018-2019 of cash or stock of \$10,000 or above in support of the University of Mount Union.

TOTAL NUMBER OF DONORS



TOTAL GIVING HISTORY



## GIFTS OF \$1,000,000 AND UP

Mr. and Mrs. E. Dominic Capers  
Mr. and Mrs. James Oelschlager

## GIFTS OF \$100,000 TO \$99,999

Dr. Elizabeth and Dr. Joseph Davidson  
Mr. and Mrs. Steve S. Harter  
Harley C. & Mary Hoover Price Foundation  
Foundation of Rachel B. Lang  
Mr. and Mrs. John F. Peters  
The Marion G. Resch Foundation  
The Timken Foundation of Canton  
Estate of Mr. William R. Zumkehr

## GIFTS OF \$50,000 TO \$99,999

Mrs. Violet G. Bica-Ross  
Mr. Clarence Brenneman  
Mr. and Mrs. Jim E. Costanzo  
Mr. and Mrs. Blair Cummins  
Mr. and Mrs. Allen E. Green  
The Huntington Foundation

Mr. Perry F. King  
Dr. Harold M. Kolenbrander  
Mr. and Mrs. Anthony J. Mercurio  
National Interstate Insurance Company  
Ohio Foundation of Independent Colleges  
Edward W. & Alice R. Powers Educational Trust  
Atty. William M. Schumann  
Mr. and Mrs. James M. Switzer

## GIFTS OF \$25,000 TO \$49,999

Alliance Ventures, Inc.  
Anonymous  
Burton D. Morgan Foundation  
Mr. and Mrs. Matthew A. Campbell  
Mr. and Mrs. P. Roger Clay  
Mr. and Mrs. Patrick J. Eaton  
Fidelity Charitable Gift Fund  
Mr. Pierre A. Garcon  
Hammond Construction  
Mr. and Dr. Richard K. Harr  
Dr. William A. Jones, M.D.  
Mrs. Eileen L. Lazear

Mrs. Carolyn Mackey  
Schwab Charitable Fund  
Scott Electric Foundation, Inc.  
Stark Community Foundation  
Dr. Geoffrey M. Utterback  
The Veale Foundation  
Mary Renkert Wendling Foundation

## GIFTS OF \$10,000 TO \$24,999

Anonymous  
Anonymous  
Aultman Health Foundation  
Mr. Thomas E. Barnhouse ^  
Mr. and Mrs. David M. Blank  
Mrs. Josephine Brenneman  
Dr. and Mrs. Kenneth W. Chalker  
The Columbus Foundation  
Council of Independent Colleges  
Mr. and Mrs. Matthew G. Darrah  
Mr. Thomas C. Flanigan  
Atty. and Mrs. John J. Flynn  
Estate of Mrs. Martha Gilbert  
Mr. and Mrs. Bradley Goris  
Goris Properties, LLC

Mr. and Mrs. Raul Hernandez  
Atty. and Mrs. Randall C. Hunt  
Atty. and Mrs. Jeffrey R. Jakmides  
The JASAM Foundation of Arizona  
Mr. and Mrs. W. Michael Jarrett  
Estate of Dr. Roland Jones  
Mrs. John Kramer  
Dr. and Mrs. Stephen Kramer  
Estate of Mr. Jack L. Madison  
Mr. and Mrs. Richard T. Marabito  
Mr. and Mrs. Gerard P. Mastroianni  
Dr. W. Richard Merriman, Jr. and Dr. Margot Kelman  
Mr. Sean M. Moore  
National Cabinet of Mount Union Women  
Mr. Thomas V. Petzinger  
Mr. and Mrs. Richard W. Pierson  
Mr. David R. Schooler  
Mr. and Mrs. Len Slack  
Dr. Niall W. Slater  
Mr. and Mrs. Lynn O. Sontum  
Mr. and Mrs. George E. Stradley II  
Wayne County Community Foundation  
Your Cause, LLC



*Through the generosity of Perry and Maxwell King and Jack and Madge Peters, the Department of Theatre welcomes an artist once a year through the newly-established Jack and Madge Peters Visiting Artist Series.*



*Foundations like The Marion G. Resch Foundation, represented by Brian Wolf (left), provide critical support to the University and its fundraising efforts, led by Greg King (right), vice president for advancement.*



# DIAMOND Circle

The Diamond Circle, the University's newly-established giving society, recognizes Mount Union's most generous benefactors who have made lifetime gifts totaling \$1 million or more.

# DIAMOND CIRCLE

## DIAMOND CIRCLE

In 2019, the University of Mount Union established a new giving society to celebrate an extraordinary group of investors who share a similar vision, passion, love, and honor for Mount Union through a lifetime of philanthropic dedication and involvement. This leadership giving society recognizes the loyalty of Mount Union's most generous benefactors who have made lifetime gifts totaling \$1 million or more. It is the profound commitment of Diamond Circle members that enables the University to not only sustain an enduring legacy of excellence, achievement, and pride but also help lay the foundation for what Mount Union will become in the future.

Anonymous  
Mrs. Violet G. Bica-Ross  
Dr. and Mrs. David M. Brown  
Mr. and Mrs. E. Dominic Capers  
Mr. and Mrs. Christopher Cicchinelli  
Mrs. Donna J. Ermlich  
Mr. and Mrs. Steve S. Harter  
Dr. Harold M. Kolenbrander  
Mrs. John Kramer  
Mr. John B. Nolan  
Mr. and Mrs. James Oelschlager  
Mr. and Mrs. John F. Peters

Mr. David R. Schooler  
Mrs. Mary Ann Stockum  
AVI Foodsystems, Inc.  
The Hoover Foundation  
The Kresge Foundation  
Foundation of Rachel B. Lang  
Ohio Foundation of Independent Colleges  
Edward W. & Alice R. Powers Educational Trust  
Pure Romance Parties, Inc.  
The Marion G. Resch Foundation



During this year's Evening Under the Stars event held at Gervasi Vineyards in Canton, Ohio, the University honored its inaugural Diamond Circle members, including Violet (Bica '44) Ross (top left), Donna Jean (Elliott '51) Ermlich (top right), Sandra (Frerichs '64) Kramer (bottom left), and John Nolan '64 (bottom right), along with various other generous foundations. Recipients were congratulated by Greg King '89, vice president for advancement, and Sherrie Wallace '09, director of advancement for planned giving.





*Ken and Becky Kossin established the Jessi Kossin Teacher Scholarship in memory of their daughter, Jessica Marie Kossin, who at the age of 21, passed away after a three-year battle with brain cancer. Jessi was at Mount Union to pursue her dream of becoming an early education teacher. Through this scholarship, students like Jacqueline Vega '19 (center), who have a genuine love and commitment to children and their education, benefit from such generous support.*

# ENDOWED FUNDS

Endowments are permanent funds that provide support for academic pursuits and programs at the University of Mount Union. Private gifts to the University create these endowments. Donors determine the purpose for which endowment income may be spent. Some common purposes include the following.

- Scholarships and awards
- Chairs, professorships, and other faculty and staff positions
- Support for an academic program of the University, department, building, or area
- Academic research
- Purchase of journals, books, art, technology, or equipment

Since the institution's inception in 1846, thousands of donors have contributed to endowment funds established for hundreds of purposes at Mount Union. Generous support for higher education, coupled with conservative and effective investment strategies, has resulted in an endowment currently valued at \$145 million (as of June 30, 2019).

## NEW ENDOWED FUNDS

The following are new for the 2019-2020 academic year.

### THE BONNORONT BUSINESS MERIT ENDOWED SCHOLARSHIP

The Bonnoront Business Merit Endowed Scholarship was established in 2017 by Douglas and Beth Bonnoront. Preference will be given to a junior or senior student majoring in accounting, economics, or finance with a GPA of 3.5 or above who wants to pursue a career

in accounting or financial planning. Selection shall be recommended by the chair of the Department of Business.

### ELIZABETH AND VICTOR J. BOSCHINI, SR. ENDOWED SCHOLARSHIP

The Elizabeth and Victor J. Boschini, Sr. Endowed Scholarship was established in 2018 by Dr. and Mrs. Victor J. Boschini, Jr. in honor

of his parents, Elizabeth and Victor J. Boschini, Sr. Distributions from the scholarship will support one full-time student who demonstrates financial need and is not a resident from the state of Ohio.

### THE MEG GERLACH BRENTON ENDOWED SCHOLARSHIP

The Meg Gerlach Brenton Endowed Scholarship was established in 2019 by Mr. Flint '78 and Mrs. Meg (Gerlach '79) Brenton. Distributions from this add-on scholarship will support one full-time sophomore student with financial need who has declared a major in one of the life sciences programs and has career aspirations to become a Physical Therapist. This scholarship is renewable for the student's junior and senior year provided they maintain a 3.0 GPA, remain in good academic and social standing, and meet the above academic criteria. The recipient will be identified through an application process and chosen by a scholarship selection committee.

### DONALD L. BUTLER, CFP® ENDOWED SCHOLARSHIP

The Donald L. Butler, CFP® Endowed Scholarship was established in 2018 by Gail Butler and her children, Jack Butler and Christine Haddon, in honor of their husband and father, Don. Distributions from the add-on scholarship will be awarded to a rising junior or senior majoring in business, accounting, economics, or finance. Preference will be given to a student who demonstrates high academic achievement and has expressed interest in entering the financial planning industry and is in good social standing. In the case of multiple applicants meeting the above criteria, preference will be given to the student with the highest cumulative GPA.

### THE HAROLD AND ALYCE ANN HALL '49 INTERNATIONAL SCHOLARSHIP

Former students and colleagues, friends, and family of Mr. and Mrs. Hall have created this scholarship in honor of the Mr. and Mrs. Hall's extraordinary contributions to Mount Union's international program. The non-renewable scholarship is available to one full-time undergraduate sophomore or upperclassman student with no regard for financial need. The student must exemplify Mr. and Mrs. Harold Hall's commitment to Mount Union's global community. Preference will be given to a student involved in the Association of International Students. The student recipient can be either a domestic or international student. A committee of the diversity organizations on campus will select the student recipient.

### THE DOUGLAS '66 AND GAIL (OPATRNY '66) HUTH ENDOWED SCHOLARSHIP

The Douglas '66 and Gail (Opatrny '66) Huth Endowed Scholarship was established by Douglas and Gail Huth in recognition of Mount Union's outstanding professors of personal influence; Dr. Paul H. Chapman (1957-1986), Dr. Louis A. Pappenhagen (1925-1970), and Prof. James H. Wuske (1956-1980). This add-on scholarship will be given to a junior or senior student who equals or exceeds academic expectations and demonstrates self-motivation and diligence, but may not necessarily be the highest academic achiever. Preference will be given to a student showing high financial need and/or at risk of not continuing or completing his/her education at Mount Union.

### THE JESSI KOSSIN TEACHER SCHOLARSHIP

On September 26, 2017, the Jessi Kossin Teacher Scholarship was

established in memory of Jessica Marie Kossin, who at the age of 21, passed away after a three-year battle with brain cancer. Prior to her passing, Jessi attended the University of Mount Union to pursue her dream of becoming an early childhood education teacher. This scholarship is available to one or two full-time undergraduate junior or senior students, seeking licensure in early childhood education, who have maintained an overall academic cumulative 3.0 GPA or better. The applicant must have a genuine love of children, a strong sense of commitment to children and their education, and be dedicated to the teaching profession.

### THE MCINTOSH SCHOLARSHIP

The McIntosh Scholarship was established in 2016 by John R. '66 and Carla McIntosh in honor of their three children, Danielle (McIntosh '01) Hawk, J.D. McIntosh, and Brinton McIntosh. Preference will be given to a senior education major with financial need in good academic and social standing.

### THE JAMES AND VANITA OELSCHLAGER ENDOWED SCHOLARSHIP

The James and Vanita Oelschlager Endowed Scholarship shall be awarded to a student or students who have substantial financial need, as demonstrated in the information provided to the Office of Admission and the Office of Student Financial Aid.

### THE MEL AND CONNIE PUCCI ENDOWED SCHOLARSHIP

The Mel and Connie Pucci Endowed Scholarship was established in 2017 by the Pucci children in honor of their parents, Mel and Connie. Distributions from the add-on scholarship will be awarded to a rising senior who graduated

from Marlinton Local School District majoring in one of the health sciences programs. Preference will be given to a senior who demonstrates good academic and social standings, who has maintained a 3.0 GPA throughout their college education, and has financial need.

### THE WILLARD AND VIVIAN RICHARDS SCHOLARSHIP

The Willard and Vivian Richards Scholarship was endowed in 2019 by Mr. James E. Kimble Jr. '73 and Dr. Pamela Kay (Richards '73) Kimble in honor of Dr. Kimble's parents, Willard and Vivian Richards. Distributions from the scholarship will support access to a Mount Union education to one full-time diverse student with financial need. This renewable scholarship will be awarded to an incoming freshman and will stay with the student over the entirety of their undergraduate career, provided the student remains in good academic and social standing.

### GARTH R. THOMPSON MINISTERIAL SCHOLARSHIP ENDOWED FUND

The Garth R. Thompson Ministerial Endowed Fund was established in 2017 with an estate gift from Rev. Garth R. Thompson '57. The add-on scholarship will support students who are exploring ministry as a vocation. Each spring for qualified students, an application will be available that includes an essay to demonstrate the student's involvement in campus and/or community ministry. The selection committee including the University chaplain, advancement stewardship specialist, and director of student financial aid, will select the scholarship recipient with one-half of the scholarship dollars distributed into the student's tuition account at the beginning of the following fall semester and the other half in the spring.

## EXISTING ENDOWED FUNDS

The following are existing endowments established prior to 2019-2020.

**FRANK ACKELSON TRUST**  
Established by Frank Ackelson of Salem, OH for the purchase of new science equipment for the classroom or laboratory and/or science publications for the Science Library. This gift was made in memory of Emmor Ackelson, Laura Ackelson Case and Frank Ackelson.

**JEAN G. ADAMS SCHOLARSHIP**  
Established in 1992 through a bequest of Mrs. Jean (Greenham '38) Adams of Canton, OH.

**JAMES H. AND ALICE JAYNE AKE**  
Established through a life income agreement by James H. '37 and Alice Jayne Ake of Akron, OH. The ultimate use of the endowed income stream from the fund will be directed by the Board of Trustees.

**GEORGE I. ALDEN TRUST**  
Established in 1993 as a general scholarship by a gift from the George I. Alden Trust of Worcester, MA. This independent foundation was established in 1912 by Mr. Alden to promote education.

**THELMA MCCrackEN ALLEN AID FUND**  
Established by a gift from the estate of Thelma M. Allen to support a capable, deserving junior or senior who, except for financial assistance, would be unable to continue his or her college education.

**JOHN TAYLOR AND ROBERTA ALTON SCHOLARSHIP**  
Established by former Trustee Bishop Ralph T. Alton '28 in memory of his parents. The Rev. John Taylor Alton '12 served as a minister in the Northeast Ohio Conference of the United Methodist Church for more than 50 years.

**ALUMNI COMPUTER SCIENCE PRIZE**  
The Alumni Computer Science and Information Systems Prize was established in 1986 by the alumni of Mount Union College who majored in computer science and/or were working in the computer science field. The award is given annually to one or more outstanding students majoring in computer science or information systems who have achieved junior status. The recipient(s) of the award are to be determined by the faculty of the Department of Computer Science. In 2016, the Information Systems major was discontinued, and the department name is now the Department of Computer Science. The department has requested the name change to The Alumni Computer Science Prize.

**AMERICAN STEEL FOUNDRIES SCHOLARSHIP**  
Established by Amsted Industries Foundation of Chicago, IL.

**ANDALORO FAMILY FUND FOR BIOLOGICAL STUDIES**  
Established in 2006 to provide financial assistance to students with financial need who major or minor in the Department of Biology to experience academically-enriching out-of-classroom activities.

**ANDLER-HARTWELL EDUCATIONAL AWARD FUND**  
Established by Mr. William Ross Aidler '20 through a charitable trust.

**THE GARY L. ANDREANI SCHOLARSHIP**  
The scholarship was established in 2017 as a gift from the family of Gary L. Andreani. Distributions from the scholarship support one full-time student from West Branch High School who demonstrates financial need and well-roundedness. This renewable scholarship will be awarded to an incoming

freshman and will stay with the student over the entirety of his or her academic career, provided the student remains in good academic and social standing as well as actively participates in community service opportunities during his or her time at Mount Union. This student shall be selected by the Office of Student Financial Services in accordance with approved procedures of the University of Mount Union.

**THE CLARK AND SANDRA (ALBRICH) ARCHER PRIZE IN MEDIA COMPUTING**  
The Clark and Sandra (Albrich) Archer Prize in Media Computing was established in 2010 to recognize the accomplishments of an outstanding senior media computing major at the University of Mount Union.

**THE NANCY HARDS ASHCOW MEMORIAL ENDOWED SCHOLARSHIP**  
The Nancy Hards Ashcom Memorial Endowed Scholarship was created in 2007 to memorialize the mother of Nancy Ashcom '69 and grandmother of Benjamin M. Utterback '96. Distributions from the scholarship are used to support the educational expenses of a deserving student with preference given to a member of the Alpha Chi Omega Sorority. Recipients shall be selected by the Office of Student Financial Services in accordance with the approved procedures of Mount Union.

**AULTMAN HOSPITAL SCHOLARSHIP FUND**  
The Aultman Hospital Scholarship Fund was established in 2007 to be awarded to a full-time student who is a resident of Stark County.

**THE AULTMAN HEALTH FOUNDATION ENDOWED REGULA SCHOLARSHIP**  
The scholarship will support the Regula Scholars program of the Ralph and Mary Regula Center for Public Service and Civic Engagement. The Regula Scholars program provides additional financial awards to sophomores, juniors, and seniors who show academic excellence, strong leadership skills and a deep dedication to public service and civic engagement.

**MRS. NORMA BADER**  
Mrs. Norma Bader helped to establish the Robert E. Bader Scholarship fund in memory of her late husband who was a professor of history from 1947-1982.

**ROBERT E. BADER SCHOLARSHIP**  
Established in 1990 in honor of the late Dr. Robert E. Bader, chairman of the Department of History and Political Science (1947-1982), by his family, friends, and former students.

**THE REV. KENNETH AND MARTHA BAILLIS SCHOLARSHIP**  
The Kenneth and Martha Baillis Scholarship was established in 2012 by Rev. Kenneth ('68) and Mrs. Martha (Shoemaker '65) Baillis. The scholarship was established to support junior or senior students with a 3.00 or above grade point average and shows financial need with preference given to students with parents ordained in the United Methodist ministry or are Christian missionaries. Distributions from the fund support students in good academic standing as recommended by the Office of Student Financial Services.

**THE REV. KENNETH AND MARTHA BAILLIS LEGACY SCHOLARSHIP**  
The Rev. Kenneth and Martha Baillis Legacy Scholarship was established in 2014 as a gift by Kenneth and Martha (Shoemaker

'65) Baillis. The interest from the endowment fund shall be used to provide scholarship help to a sophomore, junior, or senior with financial need. Preferences shall be given to students that are members of the Kilbourne UMC, Aldersgate UMC, West Lafayette UMC, Rittman UMC, Community UMC, Greentown UMC, Hannibal UMC in Clarington or Hope UMC.

**CHARLES C. BAKER FAMILY SCHOLARSHIP FUND**  
Established by a bequest from the late Miss Hazel Baker, daughter of the late Mr. and Mrs. Charles C. Baker of Alliance, OH in memory of her parents and sisters, Lottie and Zora Baker.

**MR. AND MRS. GEORGE BALL**  
Established through a life income agreement by George '43 and Doris (Flynn '43) Ball of Akron, OH. The ultimate use of the income will be directed toward the Dr. Charles B. Ketcham Alumni Chair in Religion and Philosophy.

**NELSON G. AND KATHRYN E. BALL MEMORIAL FUND**  
Established in 1993 by Nelson G. Ball of Naples, FL to provide scholarships for worthy students.

**ROBERT A. BALL '29 AND NELSON G. BALL '26 AID FUND**  
Established in 1986 by a gift from Coe W. Wadelin '50 and his wife, Carolyn G. (Walker '49) Wadelin.

**THE DR. WILLIAM S. '29 AND LIBERA W. BANFIELD SCHOLARSHIP FUND**  
Established through a gift from Mr. William S. Banfield, II '62 and Mrs. Mary (Carson '62) Banfield. The funds shall assist worthy young men and women in their junior or senior years who are majoring in pre-medicine or elementary education, with preference to those students from the Columbiana, OH and Jefferson County, OH areas.

**BANK ONE OF ALLIANCE SCHOLARSHIP**  
Established in 1980 by First National Bank, Alliance, OH which is now Bank One, Alliance, OH.

**THE JESSIE E. BARKER ENDOWED SCHOLARSHIP FUND**  
Established in 1998 by and between Virginia O. Reed, Trustee of the Jessie E. Barker Trust as a memorial to Jessie E. Barker. The award shall be made to students who have maintained a high school grade point average of at least 2.5, have demonstrated financial need and who have resided for the previous four years in Carroll, Columbiana, Mahoning, or Stark counties, OH.

**ESTHER M. BARNES SCHOLARSHIP**  
Established through a bequest by the late Esther Barnes of Canton, OH.

**THE BARNHOUSE FAMILY ENDOWED SCHOLARSHIP**  
The Barnhouse Family Endowed Scholarship was established in 2009 by alumnus Thomas "Tim" and Doris Barnhouse to support education majors or minors with financial need and an expressed desire to teach.

**DELORIS M. BARRET SCHOLARSHIP**  
The DeLoris M. Barret Scholarship was established in 2008 by her loving family and is to be used in support of educational expenses of a deserving student, with preference given to a student majoring in Early Childhood Education who is active in campus and community activities. Recipients shall be selected by the Office of Student Financial Services in accordance with the approved procedures of the University of Mount Union.

**THE BENITA JEANE (ARCHER '51) BAYLOR ENDOWED SCHOLARSHIP**  
The Benita Jeane (Archer '51) Baylor Endowed Scholarship was

created in 2004 by Charles F. Baylor in honor of his wife, a member of the Class of 1949. Funds should be used to support a deserving biology major, as recommended by the chair of the Department of Biology.

**MR. AND MRS. CHARLES BAYLOR**  
Established by Charles and Jeane (Archer '51) Baylor of North Canton, OH. The income from the fund will be directed by the Board of Trustees.

**DR. AND MRS. SEWARD E. BEACOM CHEMISTRY SCHOLARSHIP**  
Established in 2007 by Dr. and Mrs. Seward E. Beacom, of Belfast, Maine, in memory of Drs. Louis A. Pappenhagen and William Mc. Morgan, to provide financial assistance to a sophomore majoring in chemistry.

**MR. AND MRS. C. H. BECK SCHOLARSHIP**  
Established in 1987 through a bequest of Mr. Clarence H. Beck of Warren, OH as a scholarship with preference for those, if any, who are interested in preparing for the ministry in the Methodist Church, or in educating themselves to serve in related church positions, or those who are interested in entering the profession of general banking.

**THE JOEL AND MARY JANE BEEGLY CIVIL ENGINEERING ENDOWED SCHOLARSHIP**  
The Joel and Mary Jane Beegly Civil Engineering Endowed Scholarship was the first scholarship designed to support students entering the newly established civil and mechanical engineering programs at Mount Union.

**BEEGLY RESTORATION ECOLOGY PROGRAM**  
Established in 1995 by James L. Beegly '32 of Youngstown, OH to provide program support for land restoration research through the environmental studies program.

**LEON A. BEEGLY FUND**  
Established by the Beegly Family of Youngstown, OH, endowment gifts were made for Beegly Hall as well as to an unrestricted gift to the endowment fund.

**MARGARETTA BENNETT STUDENT LOAN FUND**  
Established in accordance with the will of Mr. Raymond Bennett.

**JOHN BENTIA STUDENT AID FUND**  
Established by the late John Bentia '38 to assist black and other minority students in the Alliance, OH area. Bentia was a member of the University of Mount Union Board of Trustees and president of the Alliance Manufacturing Company.

**VIRGINIA BICA ENDOWED SCHOLARSHIP**  
The Virginia Bica Memorial Endowed Scholarship was established in 2006 in honor of Ms. Virginia Bica, an Alliance native who served as an educator and counselor to young people during a career and life dedicated to others. Funds shall be awarded annually to a student at Mount Union with a preference for students majoring in education and interested in pursuing counseling as a career.

**THE PAUL R. BISHOP SCHOLARSHIP**  
The Paul R. Bishop Scholarship was established in 2011 by longstanding University of Mount Union Trustee and Friend Paul R. Bishop to support the educational expenses of a needy student with a minimum GPA of 2.5 who is majoring in the natural sciences. Preference shall be given to a graduate of Louisville High School or St. Thomas Aquinas High School with a minimum high school GPA of 2.5. Recipients shall be selected by the Office of Student Financial Services in accordance with the approved procedures of the University of Mount Union.

**ANN BLACK SCHOLARSHIP FUND**  
Established through a bequest of Mrs. Homer E. Black of Canton, OH.

**DR. AND MRS. JOHN BLOOM**  
Established through a life income agreement by Dr. and Mrs. John Bloom '33 of Largo, FL. The ultimate use of these funds will be a scholarship fund for deserving students.

**MARY M. BOOHER SCHOLARSHIP FUND**  
Established through a bequest of the late Mary M. Booher of Wooster, OH in honor of her lifelong friendship with and respect for Miss Sarah C. Stevenson, who served Mount Union as dean of women and professor of history (1924-1939).

**MARGARET AND BILL BOOTH SCHOLARSHIP**  
Established by Dr. and Mrs. William Booth of Phoenix, AZ. Dr. Booth, a 1941 graduate, served on the Board of Trustees from 1969 to 1981. He and his late wife, Margaret, have been consistent, long-term supporters of the University.

**MARGARET AND BILL BOOTH SCIENCE EQUIPMENT FUND**  
Established through a life income agreement of Dr. William T. Booth '41 and the late Margaret Booth of Phoenix, AZ to benefit the Science Equipment Endowment.

**FLOYD E. BOWMAN SCHOLARSHIP FUND**  
Established by the late Mr. Floyd E. Bowman.

**MARGARET BOYD SCHOLARSHIP FUND**  
Established by Miss A. Margaret Boyd '20 of Steubenville, OH.

**GEORGE BRADIC**  
Established through a life income agreement of George Bradic in 1994 as a scholarship fund for deserving students.

**JOSEPHINE MARIE WEIR BRENNEMAN SCHOLARSHIP FUND**  
Established through the will of Mrs. Clarence Brenneman of Pittsburgh, PA.

**BRENNER FAMILY FOUNDATION**  
Established in 2003, the scholarship supports students from Youngstown, OH who qualify for financial assistance. Funds are distributed each year by the OH Foundation of Independent Colleges.

**THE SYDNEY BREYER COMPASSION SCHOLARSHIP**  
The scholarship was established in 2016 in memory of Sydney by the generosity of her friends and family members. Sydney was a bright and vibrant honors student who touched the lives of everyone who had the good fortune to know her. The Sydney Breyer Compassion Scholarship will support a female student who emulates Sydney's thoughtful, selfless, positive nature. Preference will be given to a student involved in Kappa Phi, color guard, the Honors Program, a pre-medical student, and/or a student involved in the arts. This add-on scholarship is renewable and will be awarded with no regard for financial need.

**THE ELI AND EDYTHE BROAD FOUNDATION REGULA SCHOLARSHIP**  
The scholarship will support the Regula Scholars program of the Ralph and Mary Regula Center for Public Service and Civic Engagement. The Regula Scholars program provides additional financial awards to sophomores, juniors, and seniors who show academic excellence, strong leadership skills, and a deep dedication to public service and civic engagement.

**DAVID M. BROWN ENDOWED SCHOLARSHIP**  
Established in 2006 by David M. Brown '54 of Tempe, AZ to support students of the University of Mount Union.

**DR. DONALD J. AND G. E. BRUGGER PRE-MED AWARD**  
Established in 1990 by Mrs. G.E. Brugger in honor of the late Dr. Donald Brugger '40. A native of Alliance, OH, Brugger retired from the profession of obstetrics and gynecology in 1983 after more than 30 years in practice.

**G.E. BRUGGER**  
Established by the late Mrs. G.E. Brugger of Canton, OH to benefit the Science Equipment Endowment.

**DR. JOHN D. BRUMBAUGH**  
Various endowment gifts were given by the late Dr. John D. Brumbaugh of Akron, OH. Funds were given to endow the Brumbaugh Chair in Environmental and Ecological Sciences (see Endowed Chair descriptions) and to provide for the general operation of the Brumbaugh Nature Center.

**BRUSH ENDOWMENT FUND**  
Established in 1971 by Mr. and Mrs. Thomas S. Brush of New York City, NY in memory of his grandparents, Louis H. Brush 1895, one of the founders of the Brush-Moore Newspapers, Inc., and Maude Steward Brush. The Brush family has been closely associated with the University since its founding.

**JAMES A. BRUSH 1860, AMELIA (MCCALL 1879) BRUSH AND LOUIS H. BRUSH 1895 SCHOLARSHIP**  
Established through the Louis H. Brush Trust in 1984. Mr. Louis H. Brush, a trustee of the University (1923-1948), also served for many years as institution's treasurer. His father, James A. Brush, taught education and mathematics from 1865-1885 and served as acting librarian from 1869-1874 and 1878-1885. His mother, Amelia McCall Brush, taught English and history and served as preceptress of the Ladies Hall.

**MR. W. THOMAS BUCHANAN**  
Established through a bequest of the late W. Thomas Buchanan of Toledo, OH for use as directed by the Board of Trustees.

**THE SUSIE (OBERHOLZER '73) BUCKEL ALUMNI SCHOLARSHIP**  
Established in 2010 by current and past members of the University of Mount Union Alumni Association Executive Board and renamed in 2013 in memory of former Alumni Association Executive Board Member Susie (Oberholzer '73) Buckel. This fund will support students who embody Mount Union's mission and demonstrate financial need as determined by the University. To be eligible, the applicant must have sophomore academic standing or above, having at least a junior standing in the fall, and maintain a 2.50 GPA. Preference will be given to applicants whose parent(s) is an alumnus of Mount Union.

**MR. AND MRS. DONALD P. BURCH**  
Established through a life income agreement by Donald and Marcia Burch of Cedar Grove, NJ. The ultimate use of the funds will be the establishment of a fund to enhance the University's student life program in the areas of mental health and well-being.

**DR. ALVIN M. AND DR. OLIVE Y. BURNER SCHOLARSHIP FUND**  
Dr. Alvin M. and Dr. Olive Y. Burner Scholarship Fund was created in 2009 in an estate gift from Dr. Olive Y. Burner in memory of her husband Alvin M. Burner who was a member of the class of 1945.









preference to students from the Southwestern United States.

#### **ANN MCCONAHAY SCHOLARSHIP**

Established through The Ann McConahay Educational Foundation in 1995 to support needy and deserving graduates of Alliance High School.

#### **DR. BERNIE AND MRS. DONA MCCONNELL EDUCATIONAL RESOURCE TECHNOLOGIES-NURSING ENDOWED FUND**

Established in 2013 by a will bequest of Dr. Bernie and Mrs. Dona McConnell, distributions from the endowed fund will assist with the acquisition of medical technology and equipment, along with associated training expenses for the University of Mount Union's Department of Nursing. The technology solutions will provide an innovative learning environment that will facilitate the transformation of students in the Mount Union's nursing program into competent healthcare providers.

#### **THE W. PHIL MCCONNELL ENDOWMENT FUND**

Established in 1999 through the estate of Mr. McConnell and a gift from Dr. Bernie and Dona McConnell to support and promote new technologies in music education.

#### **THE GRACE A. MCCORD AND GRACE L. PUTLAND ENDOWED SCHOLARSHIP**

Established in 2006 by the Beta Psi Beta Alumnae Chapter of Alpha Chi Omega to recognize active sisters from the Alpha Eta Chapter in memory of Grace A. McCord '29 and Grace L. (Taylor) '24 Putland.

#### **MCDERMOTT TECHNOLOGY, INC.**

Gifts to the Science Equipment Endowment have been made by McDermott Technology, Inc., formerly the Babcock & Wilcox Company.

#### **DAVID AND MARY BETH CARR MCFARLAND**

David and Mary Beth (Carr '44) McFarland of Warren, OH made a gift to the University Endowment Fund through a life income agreement. The ultimate use of the income from the fund will be used to support the Dr. Joseph M. Carr Lectureship.

#### **VICTOR AND ALMA MCFARLAND**

Established in 1987 through a life income agreement by Victor '28 and Alma McFarland of Ravenna, OH, the ultimate use of the funds will be directed to the Academic Enrichment Endowment Fund.

#### **JOHN AND LUCILE MCINTOSH**

John C. '48 and Lucile (Ketcham '45) McIntosh of Conway, MA made an endowment gift to the Dr. Charles B. Ketcham Alumni Chair in Religion and Philosophy.

#### **THE MCINTOSH SCHOLARSHIP**

The McIntosh Scholarship was established in 2016 by John R. ('66) and Carla McIntosh in honor of their three children, Danielle (McIntosh '01) Hawk, J.D. McIntosh and Brinton McIntosh. Preference will be given to a senior education major with financial need in good academic and social standing. Recipients shall be selected by the Office of Student Financial Services in accordance with the approved procedures of Mount Union.

#### **RUTH HARKINS MCKEOWN SCHOLARSHIP FUND**

Established for scholarships in the Department of Music through the estate of Miss Esther H. Harkins.

#### **LILLIAN B. MCLAUGHLIN MEMORIAL SCHOLARSHIP FUND**

Established through the will of Miss Lillian B. McLaughlin of Canton, OH.

#### **THE HARRY B. MCLEAN SCHOLARSHIP**

The Harry B. McLean Scholarship was established in 2009 by

Eleanor McLean, family and friends in memory of Mr. McLean '49. Distributions from the fund support students in good academic standing as recommended by the Office of Student Financial Services. The renewable scholarship shall be awarded to students showing financial need.

#### **JANET A. MCLEAN**

Janet A. McLean made a gift to the University Endowment Fund in 2004 to be used to support general scholarship.

#### **WILLIAM H. MCMASTER, JR. SENIOR PRIZE IN ENGLISH LITERATURE**

Established by his late wife, Frances Skinner McMaster, members of his family and friends, in recognition of Mr. McMaster's interest in English literature. McMaster '32 served as a trustee of Mount Union from 1963-1975.

#### **THE FRANCES P. MCNIECE SCHOLARSHIP FUND**

The Frances P. McNiece Scholarship Fund was established in 2005 with funds from the Estate of Frances (Packham '55) McNiece for scholarships for worthy students based upon academic standing and financial need.

#### **DR. RICHARD C. AND DOROTHY J. WERSTLER MCPHERSON**

Dr. Richard C. '50 and Dorothy J. (Werstler '49) McPherson contributed a generous gift in 1996 to name the McPherson Center for Human Health and Well-being.

#### **DR. RICHARD C. AND DOROTHY J. MCPHERSON ENDOWED SCHOLARSHIP**

Established in 2004 to support upperclass students interested in medical-related fields, particularly those pursuing a pre-medical curriculum.

#### **CONSTANCE OESCH MEACHAM SCHOLARSHIP FUND**

This fund was established in memory of Constance (Oesch '25) Meacham by her children: Margaret (Meacham '49) Mihalay, Eleanor (Meacham '50) Broscoe, Marian (Meacham '52) Shern, and Howard C. Meacham, Jr.

#### **ETHEL MELLINGER AWARD IN ELEMENTARY EDUCATION**

Established by Ethel Mellinger '22.

#### **THE JOHN J. AND THERESA MENOSKY SCHOLARSHIP**

The John J. and Theresa Menosky Scholarship was created in 2012 by David '80 and Julie Menosky in honor of their aunt and uncle, Jack and Theresa Menosky. Distributions from the fund support students in good academic standing as recommended by the Office of Student Financial Services. The renewable scholarship shall be awarded to freshman students showing financial need.

#### **THE DONNA J. MICHALEK, PH.D. MEMORIAL ENGINEERING PRIZE**

The prize was established in memory of Donna J. Michalek, Ph.D. following an untimely death in 2012. Dr. Michalek joined the faculty at the University of Mount Union in 2010 as the founding member and chair of the Department of Engineering. In that role, she developed the original curriculum for the mechanical engineering and civil engineering programs. Dr. Michalek was a dedicated teacher who set high standards for her students and even higher standards for herself. She devoted her life to engineering education and the engineering profession. The award is to be given each spring during Honors Convocation to a graduating student who, in the judgment of the department faculty, best exemplifies the characteristics of an engineer.

#### **DR. FRANCES A. MILLER**

Established through the estate of Dr. Frances A. Miller of Youngstown, OH as an unrestricted fund to be directed by the Board of Trustees.

#### **DR. RONALD E. MILLER**

Established through a life income agreement of Dr. Ronald E. Miller '53 of Hopewell, VA. The ultimate use of the funds will be general scholarships.

#### **JANE E. MONCRIEF**

Established in 1995 by Jane (Eynon '46) Moncrief of Alliance, OH to support the most pressing needs as determined by the University Board of Trustees.

#### **JOSEPH MONTGOMERY LEADERSHIP PRIZE**

Established by Steven S. '84 and Suzanne (Spisak '84) Harter of Houston, TX. This prize is provided annually to the Mount Union chapter of the Society of Christian Athletes for activities of the chapter that support leadership, commitment to Mount Union, industriousness, and/or faithfulness to Christian values.

#### **THE MORGAN-SONG LEADERSHIP PRIZE IN CHEMISTRY**

Established in 2012 by Dr. John C. Song in honor of his father, Dr. Henry N. Song and Mount Union's chemistry professor, Dr. William M. Morgan, a faculty member from 1922 to 1969. The prize will be awarded to a chemistry major having accomplished outstanding academic excellence, demonstrated leadership qualities and who has successively completed the Organic Chemistry II course. The recipient will be recommended by faculty members from the Department of Chemistry.

#### **THE MORGAN-SONG LEADERSHIP PRIZE IN BIOCHEMISTRY**

Established in 2012 by Dr. John C. Song in honor of his father, Dr. Henry N. Song and Mount Union's chemistry professor, Dr. William M. Morgan, a faculty member from 1922 to 1969. The prize will be awarded to a biochemistry major having accomplished outstanding academic excellence, demonstrated leadership qualities and who has successively completed the Organic Chemistry II course. The recipient will be recommended by faculty members from the Department of Chemistry.

#### **THE SHIRLEY SMITH MOSHER SCHOLARSHIP**

The Shirley Smith Mosher Scholarship was established in 2009 by Donald L. Mosher '49 in memory of his beloved wife, a member of the class of 1951.

#### **THE MURDOCH ENDOWMENT FOR SUMMER RESEARCH**

Established in 2006 by Dr. and Mrs. Arthur Murdoch to assist in attracting chemistry students to undertake summer research programs with faculty of the Department of Chemistry and Biochemistry.

#### **RICHARD AND LOIS MYERS**

Richard '44 and Lois (Everett '46) Myers of Alliance, OH made an unrestricted gift to be directed by the Board of Trustees.

#### **THE JAMES J. NAHRA ENDOWED SCHOLARSHIP**

The James J. Nahra Endowed Scholarship in Engineering was established in 2010 by James J. Nahra '90 to support American born students with financial need who are majoring in engineering. To be eligible, the student must possess the class standing of a junior or above and maintain a 3.00 GPA.

#### **NATIONAL CABINET OF MOUNT UNION WOMEN SCHOLARSHIPS**

Each year scholarships are awarded in honor or in memory of the following members: Dorothy J. Davis '62, Lucille (Brown) Ketcham, Laurie Kolenbrander, Mary (Rogusky '49) Regula, Sarah Stevenson, and Mary Evelyn (Cook '37) Weber. The Mount Union Women Memorial Scholarship is awarded each year in memory of members who have passed away.

#### **NATURAL SCIENCES SCHOLARSHIP FUND**

Established from the Trust of M. Virginia Riggs. With the proceeds

## ENDOWED CHAIRS

Endowed chairs are the highest form of recognition available to faculty members and allow donors and their families to reward perpetually outstanding teaching, a traditional hallmark of the Mount Union experience. Featured are faculty named to the previously-established endowed chairs.



#### **THE DR. JOHN D. BRUMBAUGH CHAIR IN ENVIRONMENTAL AND ECOLOGICAL SCIENCES**

Held by Dr. Chris Stanton, professor of biology and director of the John T. Huston-Dr. John D. Brumbaugh Nature Center, this chair was established in 1992 through the charitable gifts of the late Dr. John D. Brumbaugh. Brumbaugh was a dedicated physician, humanitarian, friend of education, and lover of nature. With a Bachelor of Arts degree from Johns Hopkins University, a Bachelor of Science degree from Case Western Reserve, and a Doctor of Medicine degree from The Ohio State University, Brumbaugh spent his life in Akron in private practice in ophthalmology and otolaryngology. Among his many civic responsibilities and achievements, he served on the State Medical Board of Ohio for 21 years and was a member of the Akron Health Commission for 15 years.



#### **THE MARY W. AND ERIC A. ECKLER CHAIR OF AMERICAN LITERATURE AND DRAMA**

Held by Dr. Andrew Price, professor of English and chair of the Department of English, this chair was established in 1998 through a generous gift from the estate of the late Hazel L. Johnson '35. Johnson wanted to honor and recognize the lifelong accomplishments of "Mom" and "Pop" Eckler. Dr. Eckler taught English at Mount Union from 1922 until 1955 and served as chair of the Department of English all but one of those years. Mrs. Eckler taught English as an associate professor at Mount from 1922 until 1964.



#### **THE MILTON J. LICHTY CHAIR IN BIOLOGY**

Held by Dr. Kim Risley, professor of biology and chair of the Department of Biology, this chair was established during a 1918 capital campaign but was not fully funded until 1996 through the generosity of the late Hazel L. Johnson '35. The chair is named for Major Milton J. Lichty 1892, said to be the first Mount Union man to die in World War I. The Lichty Chair was held by legendary Professor Joseph Mehollin Scott from 1918 through 1945.



#### **JOHN E. AND HELEN WEAVER SAFFELL ENDOWED CHAIR IN THE HUMANITIES**

Held by Dr. John Recchuiti, professor of history and chair of the Department of History, this chair was established in 1996 by Dr. John E. '37 and the late Helen (Weaver '44) Saffell to support scholarships and an endowed chair in the humanities. The chair is awarded to a "discipline scholar whose imaginative and creative teaching is revered for making historical and or literary studies meaningful in the lives of students." The first scholar was named in 2008-2009.



#### **THE CHARLES S. GALLAHER ENDOWED CHAIR IN BIOLOGY**

Held by Dr. Jonathan J. Scott, professor of biology, this chair was established in 2011 by the estate of Dr. Charles S. Gallaher '25. While attending Mount Union, Gallaher was an active brother of Phi Kappa Tau. He earned a Doctor of Philosophy degree in medicine from the University of Louisville. During World War II, he served as commander in the U.S. Navy Medical Corps in the southwest Pacific. He later worked as staff physician at the Kodak Company and became a surgeon and administrator of Park Ridge Hospital in Rochester, New York. Gallaher served on the Board of Trustees from 1956 to 1994 and was honored with the Alumni Service Award in 1994.







*Dr. James and Karen Perone (left), pictured with Dr. James and Judy '12 Thoma (right), are among the many dedicated faculty, staff, alumni, and friends who have been recognized for their loyalty giving and estate commitments.*

# HERITAGE SOCIETY

The Heritage Society was established by the Board of Trustees in 1989 to recognize those who have expressed their commitment to the future of Mount Union through planned gifts or estate commitments. Planned gifts include will bequests, charitable trusts, life insurance, and charitable gift annuities. We are deeply grateful to our Heritage Society members for their vision and dedication to our students. The following list is cumulative and 2018-2019 additions are indicated with a + symbol.

**\$41  
MILLION**

**HERITAGE SOCIETY  
LIFETIME GIVING**

Mr. and Mrs. Gary S. Adams  
 Mr. and Mrs. Marty E. Adams  
 Mr. and Mrs. Mark R. Allen  
 Miss Shirley A. Allen  
 Dr. and Mrs. Clark B. Archer  
 Ms. Nancy C. Ashcom  
 Mrs. Martha E. Baillis  
 Mr. Lloyd E. Barker  
 Mr. and Mrs. Donald C. Barrett  
 Mr. and Mrs. Bruce R. Beeghly  
 Mr. and Mrs. William H. Belden, Jr.  
 Ms. Sarah J. Bican  
 Mr. and Mrs. David M. Blank  
 Dr. Kathryn L. Boehnke  
 Dr. Cheryl C. Boots  
 Mr. and Mrs. William C. Bradley  
 Mr. and Mrs. Richard L. Brooks  
 Dr. and Mrs. David M. Brown  
 Dr. and Mrs. Seth W. Brown  
 Mr. Richard E. Brownfield  
 Mrs. Marcia F. Burch  
 Mr. Fred Burchfield  
 Mr. and Mrs. Gregory S. Burke +  
 Mr. Richard L. Button  
 Mrs. Georgia V. Calesi  
 Dr. and Mrs. Bradley D. Carman  
 Mr. and Mrs. James R. Chester  
 Mr. and Mrs. Christopher Cicchinelli  
 Ms. Charlotte Clark  
 Mr. and Mrs. P. Roger Clay  
 Mr. and Mrs. Ronald W. Clutter  
 Mr. and Mrs. Norman G. Coates  
 Mr. David O. Connelly  
 Dr. Norma L. Conner-Wall  
 Miss Marilyn F. Conrath  
 Mr. and Mrs. Ronald William Corbi  
 Mr. and Mrs. Robert W. Crispin  
 Mrs. Janet G. Crossland  
 Mr. J. Dawson Cunningham  
 Mr. and Mrs. Louis E. Daugherty  
 Dr. Joseph and Dr. Elizabeth Davidson  
 Mr. and Mrs. Robert J. DeHoff  
 Dr. and Mrs. William DeHoff  
 Ms. Ann W. DeLo  
 Mr. and Mrs. Dennis A. Detlef  
 Mr. and Mrs. Brian R. Dorr  
 Atty. and Mrs. Samuel L. Douglass  
 Dr. and Mrs. Richard L. Drake  
 Mr. and Mrs. James E. Dunaway  
 Mr. Thomas Durden

Mr. and Mrs. James R. Durham +  
 Mr. and Mrs. Lawrence S. Eaton  
 Mr. Richard E. Edwards  
 Mrs. Catherine S. Ellsworth  
 Dr. and Mrs. Leonard G. Epp  
 Mrs. Donna J. Ermlich  
 Dr. and Mrs. Edward L. Farnham  
 Mr. and Mrs. Frederick Faust +  
 Mrs. Billie Fideoe  
 Mr. Thomas C. Flanigan  
 Atty. and Mrs. John J. Flynn  
 Dr. Jane Y. Fong  
 Mrs. Wanda Y. Fortune  
 Mr. and Mrs. Paul E. Froman  
 Mr. and Mrs. William R. Fronk  
 Mr. and Mrs. Thomas R. Garver  
 Dr. and Mrs. Craig W. George  
 Dr. and Mrs. Richard F. Giese  
 Mr. and Mrs. H. William Gilbert  
 Mr. and Mrs. Bradley Goris  
 Mr. John A. Gottschling  
 Ms. Anne L. Grauel  
 Dr. and Mrs. Donald R. Gray  
 Ms. Nancy J. Gray  
 Dr. and Mrs. Sylvester Green  
 Mrs. Thelma A. Greiner  
 Mrs. Carol J. Grove  
 Mrs. Janet Haidet  
 Mr. and Mrs. Robert C. Happ +  
 Mr. and Mrs. Jeff L. Hattery  
 Atty. Fred J. Haupt  
 Dr. Parmie and Dr. George Herman  
 Ms. Jill Herrick  
 Ms. Nancy H. Hill and Mr. Mark A. Schaefer  
 Dr. Robert H. Hines  
 Mr. and Mrs. Thomas Hoffman  
 Miss Susan J. Holloway +  
 Mrs. James R. Hossman  
 Dr. and Mrs. Robert M. Hoynig  
 Atty. and Mrs. Randall C. Hunt  
 Mr. Joseph F. Jadick +  
 Ms. Cynthia D. Jagodnik-Jones and  
 Mr. Richard D. Jones  
 Mrs. Marjorie S. James  
 Mrs. Carol A. Johnson  
 Mr. Eric and Dr. Cathie Johnson +  
 Ms. Letha M. Jones  
 Atty. and Mrs. James R. Kandel  
 Dr. and Mrs. Thomas R. Kaufholz  
 Mr. and Mrs. Daniel R. Keller  
 Dr. and Mrs. Charles B. Ketcham

Mrs. Linda H. Kindig  
 Mr. Gregory L. King  
 Mrs. Marilyn J. King  
 Dr. and Mrs. Frederick N. Klippert  
 Dr. Harold M. Kolenbrander  
 Atty. Edward M. Kolesar +  
 Dr. Ann R. Koval  
 Mrs. Mary Ellen Krahling  
 Mrs. John Kramer  
 Dr. and Mrs. Stephen Kramer  
 Dr. and Mrs. William G. Krochta  
 Dr. and Mrs. Robert S. Kunkel, Jr.  
 Mr. and Mrs. Ed Lair  
 Mr. and Mrs. David Lakso  
 Mr. and Mrs. Gary E. Lanzan  
 Mr. and Mrs. Marvin W. Lautzenheiser  
 Mrs. Eileen L. Lazear  
 Ms. Susan L. Leathers  
 Mrs. Martha H. Lester  
 Ms. Victoria M. Liu  
 Mrs. Susan W. Loud  
 Mrs. Adriane Ludwick  
 Ms. Leigh A. Mainwaring and Mr. Herb Spear  
 Mr. Stanley L. Malecki  
 Mr. and Mrs. Gerard P. Mastroianni  
 Mr. and Mrs. Gary L. McCamon  
 Mr. and Mrs. Chad A. McCarty  
 Mrs. Dona McConnell and Dr. Marling Abel  
 Mr. David F. McFarland  
 Mr. and Mrs. Richard Lewis McLaughlin  
 Ms. Janet A. McLean  
 Mrs. Janis Morgan  
 Mrs. Lois C. Myers  
 Mr. Jon Paul Nelis  
 Judge John A. Neuenschwander  
 Mr. and Mrs. Robert J. Newbold  
 Mr. John B. Nolan  
 Mr. James R. Olnhausen  
 Ms. Virginia L. Orru  
 Mrs. Martha J. Orwick  
 Dr. and Mrs. Philip L. Orwick  
 Lt. Col and Mrs. Jed O. Pancost  
 Dr. and Mrs. James E. Perone  
 Mr. and Mrs. John F. Peters  
 Mrs. Mary C. Petrich  
 Mr. Thomas V. Petzinger  
 Mr. and Mrs. John J. Philippi  
 Mr. and Mrs. Douglas A. Poad

Dr. Virginia A. Rhodes +  
 Mr. and Mrs. John K. Roberts  
 Ms. Mary Jo Rodriguez  
 Mrs. Violet G. Ross  
 Mr. John O. Rouse  
 Mr. Thomas E. Rummell  
 Mr. and Mrs. Peter A. Russell  
 Mr. and Mrs. Charles E. Schilling  
 Mr. David R. Schooler  
 Atty. William M. Schumann +  
 Dr. and Mrs. Larry D. Shinn  
 Mr. and Mrs. Glenn Silverhart  
 Mr. and Mrs. Len Slack +  
 Mr. and Mrs. John J. Slezak  
 Mr. and Mrs. Lynn O. Sontum +  
 Dr. and Mrs. Robert L. Speer  
 Mrs. Eleanor B. Spencer  
 Mrs. Mildred Spencer  
 Mr. Douglas E. Spiker  
 Mr. and Mrs. William J. Spiker, J.D.  
 Mr. and Mrs. Sterling V. Starr  
 Mr. Chris D. Stenberg  
 Mr. and Mrs. Chuck Stinnett +  
 Mr. and Mrs. Keith F. Stocker  
 Mrs. Mary Ann Stockum  
 Mr. Philip J. Strasser and Mrs. Lynne W. Strasser  
 Mrs. Martha Jane Svoboda  
 Mr. and Mrs. James M. Switzer +  
 Ms. Sandra L. Thomas  
 Mr. and Mrs. Gene A. Thorn III  
 Ms. Lee Ann Thorn  
 Mr. Ralph E. Toalston  
 Mrs. Sandra L. Tucker  
 Mr. and Mrs. Edward J. Turner  
 Mr. Ward M. Tuttle  
 Mr. and Mrs. Bill F. Ungar  
 Mr. and Rev. Paul Re Vanderpool  
 Mr. Loren C. Veigel  
 Mrs. Carolyn G. Wadelin  
 Mrs. Sherrie J. Wallace  
 Dr. and Mrs. David A. Wavrek  
 Dr. and Mrs. Thomas P. Weil  
 Mrs. Shirley A. Weimer  
 Mrs. Linda C. Wells  
 Mr. R. Blaine White  
 Mr. and Mrs. Warren T. Wier  
 Mr. and Mrs. David S. Wolpert  
 Mr. and Mrs. Gerald L. Zaborsky  
 Mr. Lisle A. Zehner III  
 Miss Patricia Ann Zugic  
 LTC and Mrs. Anton P. Zurbrugg



Membership in the Forever Mount Society is granted to alumni and friends such as (l-r) Judy (Jones '69) McLaughlin, Linda (DuBois '67) and Thomas Hoffman, and Kay (Norton '70) Hettler, who have supported the University for 25 years or more.

# FOREVER MOUNT SOCIETY

Established in 2012, the Forever Mount Society recognizes committed donors who have made gifts to the University for 25 years or more. Participation in the Forever Mount Society signifies being part of a special community of faithful investors dedicated to shaping the future of Mount Union.

**\$70  
MILLION**

FOREVER MOUNT SOCIETY  
LIFETIME GIVING

Mrs. Roberta Abbey  
Mrs. Sara Ackermann  
Mr. Gary Adams  
Miss Leah Agnoni  
Dr. Donald Ahearn  
Mrs. Arlene Akerman  
Mr. Michael Alexander  
Mrs. Linda Allardyce  
Mr. Neil Allen  
Mr. Mark Allen  
Mrs. Rita Allen  
Dr. Thomas Allison  
Mr. Mark Altier  
Mr. Donald Ames  
Mr. Wayne Amos  
Mrs. Denise Anders  
Mr. Micheal Anders  
Mrs. Janet Anderson  
Mr. Larry Anderson  
Mrs. Pamela Anderson  
Mr. Winston Anderson  
Mrs. Barbara Anderson  
Mrs. Paula Andreani  
Mrs. Vicky Ansberry  
Mrs. Kathleen Antona  
Mr. John Arbie  
Mr. Thomas Ardisson  
Mrs. Barbara Armitage  
Mr. John Armitage  
Judge Mark Armstrong  
Ms. Nancy Ashcom  
Mr. James Ashelman  
Ms. Daleen Askins  
Mr. Robert Atkinson  
Mrs. Janet Austin  
Mr. John Austin  
Mr. William Austin  
Mrs. Lynne Austin  
Dr. Benjamin Babcock  
Mrs. Laurel Babcock  
Mrs. Marcia Bable  
Mr. Daniel Bagnola  
Mr. Mark Bailey  
Mrs. Patricia Bailey  
Mrs. Martha Baillis  
Mrs. Mary Jane Bair  
Mrs. Elizabeth Baird-Alonge  
Rev. Jerald Baker  
Mrs. Mary Banfield  
Mrs. Joy Banish  
Mr. Rich Banish  
Mrs. Janice Barker-McLaughlin  
Mr. Donald Barrett  
Mrs. Jane Barrett  
Dr. Michael Barrett  
Mr. Mark Barry

Ms. Barbara Barstow  
Mrs. Lynne Barth  
Ms. Heidi Bartholomew  
Mrs. Rebecca Barton  
Mr. Mike Barton  
Mrs. Rebecca Bauschlinger  
Mr. Michael Bavola  
Ms. Jeanne Bay  
Dr. James Bear  
Mr. Tom Beard  
Mr. Richard Beck  
Dr. Marquita Bedway  
Mrs. Nancy Beeghly  
Mr. Joel Beeghly  
Mr. Arthur Bell  
Dr. Priscilla Bell  
Ms. Carol Benedict  
Ms. Jane Benner  
Mr. Robert Benson  
Ms. Saimi Bergmann  
Mr. Mark Bergmann  
Mrs. Laura Berkeley  
Mr. Scott Berkeley  
Mr. Gary Berleue  
Mr. Thomas Berlin  
Mr. Leonard Bernauer  
Mrs. Bonnie Bernhardt  
Mr. Robert Berrodin  
Ms. Sarah Bican  
Mrs. Shirley Bickel  
Mrs. Patricia Biggs  
Mrs. Barbara Bishop  
Ms. Jane Blackie  
Mr. Albert Blank  
Mrs. Jeanette Blank  
Mrs. Bonnie Blank  
Mr. David Blank  
Dr. David Bloor  
Mrs. Charles Bobosky  
Mr. Richard Boland  
Miss Lisa Bole  
Ms. Charlene Bolton  
Mrs. Pamela Boone  
Miss Diane Boothe  
Mr. Thomas Boothe  
Dr. Cheryl Boots  
Mrs. Megan Boschini  
Dr. Victor Boschini  
Mrs. Lois Bossert  
Mr. William Bossert  
Ms. Mary Boster  
Mrs. Pauline Boston  
Mr. Will Bowdish  
Mr. Leroy Bowdish  
Mr. Merwyn Bowdish  
The Honorable Christopher Boyko

Mrs. Susan Bracken  
Mrs. Amanda Bradford  
Mrs. Paula Bradley  
Mrs. Peggy Brennen  
Ms. Kimberly Brindley  
Mrs. Jessie Brinkley  
Mrs. Virginia Brollier  
Mr. Gordon Brollier  
Mr. Richard Brooks  
Mrs. Phyllis Brooks  
Mrs. Barbara Broome  
Mr. Gordon Broome  
Mr. Lawrence Brosnan  
Mrs. Dreamalee Brotz  
Mr. Edward Brown  
Mrs. Doanne Brown  
Miss Linda Brown  
Mrs. Lila Brown  
Mrs. Elizabeth Brown  
Dr. Carol Brown  
Ms. Kay Brown  
Mr. Knox Brown  
Mrs. Lynn Brown  
Mrs. Lynne Browne  
Ms. Frances Brownell  
Dr. Mark Bruce  
Mrs. Susan Bruce  
Mrs. Robin Brucker  
Dr. Charles Brueske  
Mrs. Brenda Brueske  
Mr. Alfred Bruy  
Ms. Rita Brumbaugh  
Mr. Robert Buchs  
Mrs. Bobbie Buchs  
Mr. Al Buck  
Dr. Dan Buckel  
Dr. Donald Buckley  
Mr. Craig Buckingham  
Dr. Raymond Buganski  
Mrs. Ruth Buganski  
Ms. Marsha Bukala  
Mr. Gregory Burke  
Mr. Alan Burky  
Mr. Thomas Burless  
Mrs. Martha Burnett  
Mr. John Burnquist  
Mrs. Jean Burnquist  
Miss Patricia Burns  
Dr. Albert Butch  
Mrs. Maria Butch  
Mr. Robert Butler  
Mrs. Gail Butler  
Mr. Richard Button  
Mrs. Linda Byrd  
Mr. Charles Calhoun  
Mrs. Evelyn Calhoun

Mr. Jeffrey Callender  
Mrs. Helen Cameron  
Dr. Charles Campbell  
Mr. Philip Campbell  
Mr. Roger Campbell  
Mrs. Dana Campbell  
Mr. Richard Campbell  
Mr. Raymond Campeau  
Dr. Carol Canavan  
Mrs. Barbara Caner  
Mr. E. Dominic Capers  
Mrs. Joyce Capobianco  
Miss Bettina Capuano  
Mrs. Jean Carmack  
Dr. Bradley Carman  
Mrs. Eleanor Carver  
Mr. Howard Case  
Mrs. Rose Cassmer  
Mrs. Michele Catalano  
Dr. C. Larry Catalano  
Mr. Francis Centofanti  
Mrs. Julia Cepulis  
Mrs. Eleanor Chain  
Mr. James Chain  
Mrs. Grace Chalker  
Dr. Kenneth Chalker  
Mr. David Chambers  
Miss Barbara Chambers  
Mrs. Bette Chambless  
Dr. James Chang  
Mrs. Carol Chatfield  
Mrs. Carol Chenoweth  
Dr. Norman Chervany  
Mr. James Chester  
Ms. Judy Chester  
Mrs. Sandra Cheyney  
Mrs. Marla Chisholm  
Mr. Bruce Christoff  
Mrs. Karen Christoff  
Mr. Jon Christopherson  
Mrs. Shelly Christopherson  
Mr. Ronald Chutas  
Mrs. Sue Cieslak  
Mr. Robert Cipriani  
Mr. Edward Ciszewski  
Mrs. Polly Clavijo  
Mr. P. Roger Clay  
Mrs. Patricia Clay  
Mrs. Lynne Clunk  
Mr. Roy Clunk  
Judge R. R. Clunk  
Mrs. Kathleen Clunk  
Mr. Norman Coates  
Mrs. Constance Coates  
Dr. Terence Cody  
Mr. Robert Colaner

Atty. Robert Conkel  
Mr. Thomas Conklin  
Dr. Norma Conner-Wall  
Mrs. Gail Connor  
Mr. David Conrad  
Mrs. Julianne Conrad  
Miss Marilyn Conrath  
Mr. James Coombes  
Mrs. Lesley Cooper  
Mr. Eugene Corbets  
Mrs. Mildred Corbets  
Mrs. Janice Corbi  
Mrs. Michele Cross  
Dr. Tim Cross  
Mrs. Carol Costa  
Mrs. Melissa Costa  
Mrs. Margaret Cotton  
Mr. Timothy Cotton  
Mrs. Norma Coudert  
Mr. John Cox  
Mr. Richard Craig  
Mr. David Craytor  
Mrs. Kathleen Crispin  
Dr. James Crock  
Mrs. Jann Crock  
Dr. Ford Cross  
Mrs. Patricia Cross  
Mrs. Helen Cross  
Mrs. Janet Crossland  
Mr. Dick Crum  
Mr. H. Michael Crumay  
Mr. Paul Cubick  
Mrs. Janet Cummings  
Dr. Kenneth Cunin  
Mr. J. Cunningham  
Mrs. Bonnie Cunningham  
Ms. Joan Curren  
Mrs. Elinor Currie  
Dr. David Dabelko  
Mrs. Elaine Dabelko  
Mr. Glen Danahey  
Mrs. Kathy Daugherty  
Mr. Louis Daugherty  
Dr. Daryl Daugherty  
Mr. Herbert Daugherty  
Mr. Gary Daugherty  
Dr. Beth Daugherty  
Dr. Joseph Davidson  
Dr. Elizabeth Davidson  
Ms. Dorothy Davis  
Mrs. Betty Davis  
Ms. Betty Davis  
Mrs. Bjorg Davis  
Rev. James Davis  
Mr. Edward Davison  
Mrs. Lynne Davison  
Mrs. Lynn Dawson  
Ms. Beverly Day  
Miss Denise Deal  
Mrs. Debbie Deal-Shaw  
Mr. Robert DeHoff  
Mr. Ronald DeJulio  
Ms. Ann DeLo  
Mrs. Julie DeMello  
Mr. Paul Demyanovich  
Rev. Douglas Denton  
Mrs. Andrea Denton  
Mrs. Carol Detlef  
Mr. Dennis Detlef  
Mr. David DeWitt  
Mr. Curt Dieffenbaugher  
Mrs. Jeannie Dieffenbaugher  
Mr. John Diehl  
Mr. William Dieringer  
Mr. Matthew Dilling  
Mrs. Elinor Dimick  
Mrs. Joni Dixon  
Mrs. Kathleen Dodge  
Mr. John Dolan  
Mrs. Marla Dolan  
Mrs. Mary Anne Dolan  
Mr. John Domino  
Mrs. Patricia Domino  
Mr. Paul Domino  
Mr. Brian Dorr  
Mrs. Ruth Dorr  
Mrs. Martha Dorr  
Mrs. Janet Douglas  
Mr. Kenneth Douglas  
Mrs. Judith Douglass  
Atty. Samuel Douglass  
Mr. Scot Dowell  
Mr. Keith Downard  
Mrs. Cheryl Drake  
Dr. Richard Drake  
Mr. Mark Dray  
Mrs. Catharina Drotloff  
Mr. Thomas Drummond  
Atty. Shirley Dubetz  
Mrs. Louise Dunaway  
Mr. Charles Durant  
Mrs. Martha Durey  
Mr. James Durham  
Dr. Richard Dutton  
Mrs. Carolyn Dyck  
Mrs. Sonja Dye  
Mrs. Karen Early  
Mrs. Cheryl Eaton  
Mr. Patrick Eaton  
Mrs. Idamarie Eckstein  
Ms. Shelly Edwards  
Mrs. Marilyn Edwards  
Mrs. Barbara Ehrman  
Mr. Philip Ehrman  
Mrs. Ruth Eibel  
Mrs. Carol Eiber  
Mrs. Margaret Eiland  
Mrs. Kathleen Elias  
Mr. Richard Elias  
Mr. Farley Elkins

Mrs. Catherine Ellsworth  
Mrs. Denise Ellsworth  
Mrs. Alberta Ely  
Captain Albert Eoff  
Dr. Leonard Epp  
Mrs. Donna Ermlich  
Mrs. Aileen Estep  
Mr. Roy Estep  
Mrs. Mary Evans  
Mrs. Kay Evans  
Mrs. Nancy Evans  
Mr. Michael Exley  
Dr. Anita Exley  
Mr. Eugene Fahmert  
Mrs. Vivian Faircloth  
Mr. David Falk  
Mrs. Kathleen Falk  
Mrs. Helen Farnham  
Dr. Edward Farnham  
Mrs. Jane Faust  
Mrs. Mary Feser  
Dr. Virginia Feleppa  
Mrs. Jacquelyn Felix  
Mrs. Donna Felty  
Mr. Charles Fenstermaker  
Mrs. Mary Fenstermaker  
Mrs. Cynthia Ferguson  
Mrs. Kay Ferris  
Mrs. Linda Feucht  
Mr. Terry Feucht  
Mrs. Shirley Finney  
Mrs. Julie Fiscus  
Dr. Edward Fiscus  
Mrs. Gladys Fishel  
Mrs. Cindy Fitch  
Mr. Dennis Fitch  
Mrs. Christine Fladung  
Mr. Thomas Flanigan  
Mr. Mark Fletcher  
Mrs. Connie Flynn  
Atty. John Flynn  
Mrs. Linda Folk  
Mr. Ron Folkwein  
Dr. Douglas Ford  
Mrs. Dora Forden  
Mr. Elliot Forsyth  
Mrs. Rebecca Forsyth  
Mrs. Wanda Fortune  
Mrs. Jill Foster  
Mr. Philip Foster  
Mrs. Marilyn Foush  
Mr. James Fox  
Mrs. Joan Fox  
Mr. Allen Fox  
Mrs. Lynn Francis  
Mr. Philip Francis  
Mr. Lawrence Frank  
Mrs. Carolyn Frank  
Mrs. Patricia Frank  
Mrs. Janet Franzen  
Mrs. Susan Fredrick  
Mr. Donald Friedrich  
Mr. Gary Friedt  
Mr. James Friend  
Mrs. Mary Friend  
Mrs. Mary Anne Frischkorn  
Mr. Paul Froman  
Mr. William Fronk  
Mr. Douglas Fullman  
Ms. Rhonda Funkhouser  
Mrs. Sally Galieti  
Mr. Gregory Galik  
Mr. Robert Gallina  
Mr. Jon Gamertsfelder  
Mrs. Joyce Gamertsfelder  
Mr. Victor Garman  
Mr. Art Garnes  
Mrs. Cynthia Garnes  
Mr. Doug Garver  
Mr. Thomas Garver  
Mrs. Patricia Gates  
Mr. John Gates  
Ms. Yallah Gault  
Mr. Peter Gaulton  
Mr. Lon Gaumer  
Mr. Philip Gbur  
Mr. Gilbert Geiger  
Mrs. Diane Geiger  
Mrs. Barbara Geiger  
Mrs. Ann Geise  
Mr. Robert Gempler  
Dr. Craig George  
Mrs. Shirley George  
Ms. Constance Georgenson  
Mr. Bradley Gerber  
Mrs. JoAnn Gerber  
Mrs. Emma Jean Gerhardt  
Mrs. Joyce Germane  
Mrs. Brenda Gibson  
Mrs. Janice Gibson  
Mrs. Sandra Giese  
Dr. Richard Giese  
Mrs. Linda Gilbert  
Mr. Robert Gilbert  
Mrs. Carole Gilbert  
Mr. Robert Gilchrist  
Mr. Steven Gill  
Mrs. Teresa Gill  
Mr. Scott Gill  
Mrs. Kimberly Gillenwater  
Mr. Michael Gillespie  
Mrs. Darcy Gillespie  
Mrs. Christina Gimlin  
Mr. Scott Gindlesberger  
Mrs. Susan Gindlesberger  
Mrs. Barbara Giordano  
Mr. Louis Giovaneli  
Colonel Peter Gligor  
Mrs. Doris Gluck  
Mr. Louis Godkin

Mrs. Teresa Golden-McClelland  
Mrs. Mary Goldner  
Mr. Ray Goodrich  
Mrs. Deborah Gorencic  
Mr. John Gottshall  
Mr. John Gottschling  
Mr. William Gough  
Dr. Jonathan Graham  
Mrs. Janet Graham  
Rev. Raymond Graham  
Mr. David Gram  
Mrs. Patricia Gram  
Col. J. Dee Grapentine  
Mrs. Mary Grapentine  
Mrs. Cathy Graves  
Dr. Paul Gray  
Mrs. Joan Gray  
Dr. Donald Gray  
Ms. Nancy Gray  
Mrs. Jennifer Greco  
Dr. Allen Green  
Dr. Sylvester Green  
Mr. Allen Green  
Mrs. Carol Green  
Mrs. Judith Gregory  
Mrs. Thelma Greiner  
Mrs. Patricia Griffith  
Dr. Susan Griffith  
Mr. Larry Griffith  
Mr. Gary Grosenbaugh  
Mrs. Lynne Grosenbaugh  
Mr. Herbert Gross  
Mrs. Ann Marie Guerra  
Mrs. Joyce Guilliam  
Mr. Christopher Gundlach  
Mrs. Deanna Gundlach  
Mrs. Ann Gustafson  
Atty. Charles Haag  
Mrs. Prula Hadgis  
Mrs. Hazel Haffner  
Mrs. Donna Hageman  
Mr. Michael Haidet  
Mrs. Susan Haidet  
Mrs. Janet Haidet  
Mrs. Kathryn Haidet  
Mr. Mark Haidet  
Mrs. Alyce Hall  
Mr. Harold Hall  
Mrs. Dale Halliwill  
Mr. James Halls  
Mr. Glenn Hamilton  
Mrs. Ruth Hamilton  
Mrs. Susan Hamilton  
Mrs. Nancy Hank  
Mr. Patrick Hanke  
Mrs. Elna Hanly  
Mr. Robert Hanson  
Mrs. Kim Hanus  
Mr. Robert Happ  
Mr. Stephen Harding  
Mrs. Mindy Hardy  
Atty. Stephen Harris  
Mrs. Robin Harrison  
Mr. Scott Harrison  
Mrs. Marilyn Harrison  
Mr. Rodney Harrison  
Mrs. Marjorie Harrold  
Mr. Richard Harrold  
Mr. Jeffrey Harstine  
Mr. James Hart  
Mr. Steve Harter  
Mrs. Suzanne Harter  
Mr. Lynn Hatrick  
Mr. Jeff Hattery  
Atty. Fred Haupt  
Atty. Nathaniel Hawthorne  
Mrs. Barbara Hayden  
Rev. Dwight Hayes  
Mr. Eugene Haynam  
Mrs. Susan Headley  
Mr. Patrick Heddleston  
Mrs. Debbie Heida  
Mrs. Lee Ann Heller  
Mr. William Heller  
Mr. Michael Henck  
Mrs. Joan Henck  
Mrs. James Hency  
Dr. Douglas Hendel  
Mrs. Elizabeth Henderson  
Mr. David Henne  
Mrs. Marilyn Henne  
Mrs. Emily Hennen  
Mrs. Marcia Henning  
Mr. Phil Henninge  
Mrs. Cynthia Henninge  
Mrs. Carolyn Hennon  
Mrs. Caroline Herdle  
Dr. Parmie Herman  
Mr. Jim Herman  
Mrs. Cheryl Herrick  
Mr. Thomas Herrick  
Ms. Jill Herrick  
Mr. Dennis Herrmann  
Mrs. Kathryn Hettler  
Dr. Laurel Heyman  
Mr. William Hill  
Mr. Rick Hilles  
Dr. Robert Hines  
Ms. Iva Hinkelman  
Dr. Linda Hite  
Mr. Robert Hively  
Mr. Bruce Hixon  
Mrs. Judith Hixon  
Mr. Glenn Hjelm  
Mr. Wm. Edwin Hoag  
Ms. Martha Hoag  
Mr. Richard Hobe  
Mr. Paul Hobe  
Mr. Ralph Hodgdon  
Mrs. Linda Hoffman

Mr. James Hogg  
Mrs. Kay Hogg  
Dr. William Hohman  
Mr. Joseph Holliday  
Miss Susan Holloway  
Mrs. Alice Holmes  
Mrs. Elizabeth Holter  
Mr. James Honsberger  
Mrs. Kathleen Honsberger  
Mr. D. Richard Hoover  
Mr. Dean Hoover  
Mrs. Kathleen Hopkins  
Mrs. Janice Horning  
Dr. Martin Horning  
Mr. Lawrence Horton  
Mr. Richard Horton  
Mr. Ronald Hoslar  
Mrs. Cynthia Hossman  
Mrs. Martha Hostetter  
Ms. Marilyn Howard  
Mr. James Howell  
Mrs. Marsha Howell  
Dr. James Howenstine  
Mrs. Sandra Howlett  
Mr. Bruce Howlett  
Mr. Thomas Hoyle  
Mrs. Nancie Hoyng  
Mrs. Cynthia Hubert  
Mr. Doug Hubert  
Mr. Jeff Hubert  
Mrs. Judith Huffman  
Mrs. Elisabeth Humphrey  
Mrs. Ann Marie Hunt  
Atty. Randall Hunt  
Mr. Bruce Hunt  
Mrs. Mary Beth Hunter  
Mrs. Carolyn Huntsberger  
Mr. Gary Husel  
Mrs. Nancy Huston  
Mr. David Huston  
Mr. Michael Ifantiedes  
Ms. Judith Jackson  
Atty. Jeffrey Jakmides  
Mr. Jeffrey James  
Mrs. Marjorie James  
Mr. William Jarrett  
Mr. Ralph Jentes  
Mr. Eugene Jester  
Rev. David Joachim  
Mr. Carl Johnson  
Mrs. Judy Johnson  
Mr. Lewis Johnson  
Mr. Eric Johnson  
Dr. Cathie Johnson  
Mrs. Amy Johnson  
Mrs. Carol Johnson  
Mr. Gary Johnston  
Ms. Sharla Johnston  
Mrs. Sarah Jones  
Dr. William Jones  
Mr. David Jones  
Mrs. Karen Jones  
Dr. W. Jones  
Mrs. Kathleen Judge  
Col. Dennis Judge  
Mr. Michael Jurkovic  
Mr. Michael Kalinich  
Mr. Keith Kallay  
Mrs. Virginia Kallay  
Mr. Kevin Kampfer  
Ms. Nancy Kamps  
Mrs. Clark Kandel  
Mrs. Linda Kandel  
Mr. Jeff Kandel  
Mr. Richard Karlovec  
Mrs. Pamela Kastning  
Mrs. Janet Kauffman  
Mr. Barney Kaufman  
Mr. Daniel Kaung  
Mr. Ralph Kayler  
Mr. Larry Kehres  
Mr. Michael Keller  
Ms. Lynn Keller  
Ms. Kathryn Kelly  
Mr. James Kelvington  
Mr. Richard Kempe  
Mr. Robert Kerr  
Mr. Bruce Ketcham  
Mrs. Joyce Ketcham  
Dr. Charles Ketcham  
Mrs. Barbara Kiko  
Mr. Charles Kiko  
Dr. Pamela Kimble  
Mr. James Kimble  
Mrs. Marilyn King  
Dr. Thomas King  
Mr. Gregory King  
Ms. Mark Kingston  
Ms. Denise Kipfstuhl  
Mr. Kevin Kirkland  
Mrs. Diane Kirkland  
Mrs. Norma Kitzmiller  
Dr. James Klayder  
Mr. James Klepek  
Mrs. Darcy Klimkowski  
Mr. Larry Klimkowski  
Mrs. Julianne Klippert  
Dr. Frederick Klippert  
Mrs. Shirley Kloczek  
Ms. Deborah Knepp  
Mr. William Koch  
Dr. David Kocher  
Dr. Harold Kolenbrander  
Atty. Edward Kolesar  
Mr. Philip Koppel  
Mrs. Theresa Kopriver  
Mr. William Korosy  
Mr. James Krabill  
Mrs. Mary Ellen Krahling  
Dr. Stephen Kramer

Mr. Charles Kreakas  
Mrs. Carolyn Krochta  
Dr. William Krochta  
Dr. Jeffrey Krochta  
Mrs. Kay Krochta  
Mrs. B. Jean Krugh  
Atty. Timothy Krugh  
Mrs. Sherrie Kubiak  
Mrs. Martha Kuceyeski  
Mrs. Carole Kuehn  
Mr. William Kuehn  
Mrs. Bertha Kuehnert  
Mrs. Brenda Kunkel  
Dr. Robert Kunkel  
Mr. Andrew Kunkel  
Mrs. Marjorie Kuntz  
Dr. Gary LaBianco  
Mrs. Kimberly LaBianco  
Mrs. Pamela Lair  
Mrs. Marilee Lake  
Mr. David Lakso  
Mr. Lawrence Lamppp  
Mrs. Joyce Lamppp  
Dr. Donald Landin  
Mrs. Helen Landon  
Mrs. Mary Lane  
Mr. Jim Lang  
Mrs. Marilyn Lang  
Mr. Gary Lanzen  
Mrs. Betsy Lanzen  
Mr. Norman Larson  
Mrs. Joanne Larson  
Mr. James Laughlin  
Mrs. Joyce Laughlin  
Mr. Marvin Lautzenheiser  
Mr. Edward Lawrence  
Mrs. Judy Lay  
Mrs. Eileen Lazear  
Ms. Susan Leathers  
Mrs. June Lee  
Mrs. Lois Lemr  
Dr. Kimberly Lenahan  
Mr. Ron Lenney  
Mrs. LuAnn Lenz  
Mrs. Sharen Leonard  
Mr. Clyde Lepley  
Mrs. Sherry Lepley  
Mr. Danny Levensgood  
Mr. George Levoy  
Mr. James Lewark  
Mr. Robert Leyde  
Mrs. Helene Liebert  
Mrs. Barbara Likins  
Dr. Michael Lindamood  
Mrs. Rozanne Linder  
Ms. Holly Lindsey  
Mrs. Patricia Linz  
Mrs. Carol Livingston  
Mr. David Logan  
Mrs. Catherine Long  
Miss Barbara Loomis  
Mrs. Kelly Lorenz  
Mrs. Adriane Ludwick  
Mrs. Marcia Lukens  
Mr. David Lundquist  
Mrs. Judith Lundquist  
Mr. William Luntz  
Mr. James Lusk  
Mrs. Sue Lusk  
Mr. James Luteran  
Mrs. Marilyn Luteran  
Mr. Dennis Lutter  
Mr. Bradley Lynne  
Mrs. Denise Mackall  
Mr. W. Thomas Mackall  
Mrs. Barbara Mackey  
Mr. Thomas Mackey  
Mrs. Carolyn Mackey  
Ms. Kandee MacQueen  
Mr. Jack Madison  
Dr. James Magisano  
Mr. Augusts Magons  
Mrs. Faye Mahoim  
Mrs. Lizbeth Mahon  
Mr. Paul Mahon  
Ms. Elizabeth Maierson  
Mr. Harold Mains  
Mrs. Ellen Mains  
Ms. Leigh Mainwaring  
Mr. J. Maldonado  
Mr. Stanley Malecki  
Mrs. Paula Malone  
Atty. Robert Malone  
Mr. Tim Maloney  
Mr. Patrick Mancuso  
Mr. George Mani  
Mrs. Polly Marabito  
Mr. Richard Marabito  
Mr. David Marconi  
Dr. William Markley  
Mrs. Judy Marrotte  
Miss Leeda Marsh  
Mr. Ronald Martin  
Mrs. Susan Martin  
Dr. Bradley Martin  
Dr. April Mason  
Dr. Scott Mason  
Dr. Sheryl Mason  
Mr. Richard Masters  
Dr. Patricia Matthews  
Mrs. Carol Mattison  
Rev. Martha Mattner  
Mr. Paul Maurer  
Ms. Cynthia Mazda  
Mr. Gary McCamon  
Mrs. Nancy McCamon  
Dr. Charles McClougherty  
Mrs. Deborah Mcclary  
Mrs. Sarah McCloskey  
Mr. Victor McCloskey

Mrs. Carol McCrea  
Dr. Robert McCrea  
Mrs. Lois McCrea  
Mrs. Virginia McCready  
Mrs. Heather McCullough  
Mr. John McDowell  
Mrs. Barbara McElfresh  
Mrs. Sally McFadden  
Mr. Timothy McFadden  
Mr. David McFarland  
Ms. Mary McGaw  
Dr. Michael McGrady  
Mr. William McGranahan  
Mrs. Patricia McGregor  
Mr. John McIntosh  
Mrs. Dianne Mckenzie  
Rev. John McLachlan  
Mrs. Sandra McLachlan  
Dr. Karen McLachlan  
Mr. Richard McLaughlin  
Mrs. Judith McLaughlin  
Ms. Janet McLean  
Mrs. Eleanor McLean  
Mr. Paul McLeister  
Mrs. Kelli McMaugh  
Mrs. Trudy McWhirt  
Mr. David Menosky  
Mr. Wayne Menz  
Mrs. Cheryl Mewborn  
Mr. Jed Mewborn  
Mrs. Nancy Meyers  
Dr. Donna Middaugh  
Mrs. Yvonne Miesel  
Mr. Phil Mikita  
Dr. William Millard  
Mr. Lee Miller  
Mr. Paul Miller  
Major George Miller  
Mrs. Maria Miller  
Mrs. Karen Miller  
Mr. David Miller  
Mrs. Donna Miller  
Mr. Albert Miller  
Mrs. Shirley Miller  
Mrs. Bethanne Miller  
Dr. James Miller  
Mr. Jack Miller  
Mr. Kurt Miller  
Mrs. Mary Lou Mohr  
Mrs. Marilyn Moir  
Mrs. Pauline Mollenkopf  
Mr. Christopher Monrad  
Mr. Rebecca Montgomery  
Mrs. Susan Moore  
Mrs. Kathryn Moore  
Mr. Randolph Moore  
Mr. John Morey  
Mr. James Morgan  
Mrs. Bonita Morgan  
Mrs. Janis Morgan  
Mrs. Karen Moriarty  
Dr. Terry Morlan  
Mrs. Heidi Morlan  
Mr. Evan Morris  
Mrs. Suzanne Morris  
Atty. William Morris  
Mrs. Katharine Morris  
Mr. Chris Morrow  
Mrs. Nancy Morrow  
Mr. Robert Morrow  
Mr. Robert Mortensen  
Mr. Chuck Moyer  
Mr. Daniel Mucci  
Mrs. Jean Muetzel  
Mr. Timothy Muetzel  
Mr. Michael Muffet  
Mrs. Janet Muffet  
Mrs. Dorothy Muhlheim  
Mr. Wayne Muhlheim  
Ms. Sally (Sarah) Mundell  
Dr. Arthur Murdoch  
Mr. Bradley Necker  
Judge John Neenschwander  
Miss Natalie Newhous  
Mrs. Dorothy Ney  
Mrs. Maryellen Nimon  
Mr. John Nolan  
Mrs. Carolyn Nordgren  
Mr. Richard North  
Mr. Michael Norton  
Mr. John Nussbaumer  
Rev. Irvin Nussdorfer  
Mr. Arthur O'Neil  
Mr. Charles Oberholzer  
Mr. Vincent Obmann  
Mr. Lynn Oehling  
Mrs. Vicki Oehling  
Mr. James Oelschlager  
Mrs. Vanita Oelschlager  
Mrs. Carol Ogline  
Mr. Roger Ohlemacher  
Mr. Joe Orin  
Mr. Ray Orlando  
Mrs. Jennie Orvis  
Mrs. Joan Orwick  
Dr. Philip Orwick  
Mrs. Martha Orwick  
Mrs. Penny Ott  
Col. Timothy Ott  
Mr. Eric Otto  
Mrs. Rhea Overley  
Mrs. Betsy Owen  
Mr. David Owens  
Dr. Gary Owens  
Mrs. Susan Owens  
Mrs. Jane Page  
Ms. Patricia Paidas

Mrs. Kathe Paidas  
 Mr. Harry Paidas  
 Mr. Richard Painting  
 Dr. Larry Palmer  
 Mr. Fred Pamer  
 Mrs. Jay Pamer  
 Mrs. Dolores Pancoast  
 Lt. Col Jed Pancoast  
 Mrs. Charlene Pankuch  
 Mr. Dominic Pannitto  
 Mrs. Persephone Pappas  
 Mrs. Joan Parcell  
 Mr. Kirk Parker  
 Mrs. Jennifer Parker  
 Mrs. Nancy Parker  
 Mr. William Parry  
 Mrs. Nancy Parsley  
 Mrs. Hannah Partridge  
 Mr. Dean Patrick  
 Mr. Kenneth Patrick  
 Mrs. Gretchen Patterson  
 Mrs. Nancy Patterson  
 Mrs. Carol Patterson  
 Mr. Henry Paul  
 Mrs. Lynda Paul  
 Mr. Michael Pauli  
 Mrs. Linda Pauli  
 Dr. William Paulus  
 Mr. Larry Paxton  
 Ms. Heidi Paxton  
 Rev. Sandra Payette  
 Mrs. Anne Payling  
 Mrs. Kathleen Pedroff  
 Dr. Joseph Perez  
 Dr. James Perone  
 Mr. John Peters  
 Mrs. Mary Petrich  
 Mr. Thomas Pfenzinger  
 Ms. Tina Pfenninger  
 Mr. Ronald Phillips  
 Mrs. Nancy Phillips  
 Dr. Carol Pierce  
 Mr. Gary Pierce  
 Mrs. Jennifer Pierce  
 Mr. Richard Pierson  
 Mrs. Susan Pierson  
 Dr. Kathleen Piker-King  
 Mrs. Carol Pinney  
 Mr. Hubert Pinney  
 Mr. Lawrence Pinto  
 Mrs. Sylvia Piper  
 Mrs. Susan Pironti  
 Mrs. Patricia Platt  
 Mr. J. Edward Pohjala  
 Mr. Douglas Pohto  
 Mrs. Hollace Poissant  
 Mrs. Martha Polacek  
 Mrs. Cynthia Pollock  
 Mr. John Pollock  
 Mr. Timothy Popa  
 Mr. William Porter  
 Mr. Alan Porter  
 Mrs. J. Elaine Porter  
 Mr. Stephen Porter  
 Mrs. Nancy Poston  
 Mr. Robert Poto  
 Mrs. Toni Povenski  
 Mr. Albert Prazniak  
 Mr. Mark Preusser  
 Dr. Diana Priest  
 Mrs. Nancy Pruetter  
 Mr. Melvin Pucci  
 Mr. James Puckett  
 Mr. Ted Purviance  
 Mrs. Carol Quackenbush  
 Mrs. Nancy Ratcliffe  
 Mrs. Carol Radigan  
 Mrs. Gayle Radler  
 Mr. A. Lee Radler  
 Mr. Richard Raebel  
 Mrs. Sandra Raffa  
 Mr. Carl Ralston  
 Ms. Elinor Ralston  
 Ms. Sara Ramsay  
 Mr. Alan Ramsay  
 Mrs. Judith Ramsay  
 Mr. Robert Ramsey  
 Mrs. Grace Rankin  
 Mrs. Janet Ray  
 Mrs. Sibyl Ream  
 Dr. Karen Reed  
 Mr. Larry Reeder  
 Mrs. Jill Reeder  
 Dr. H. Louis Rees  
 Mr. David Reichard  
 Mrs. Denise Reichard  
 Mrs. Deborah Remias  
 Mrs. Maxine Remita  
 Mr. William Rhodes  
 Dr. Virginia Rhodes  
 Mrs. Sara Richeson  
 Mrs. Kathleen Rickert  
 Mr. Harold Riggle  
 Mrs. Joan Riggle  
 Mrs. Patricia Ripple  
 Mrs. Tracy Ritchie  
 Dr. James Ritchie  
 Mr. Bruce Robb  
 Mr. Ralph Roberts  
 Atty. Alex Robertson  
 Mrs. Karen Robinson  
 Dr. Thomas Robinson  
 Mrs. Barbara Robinson  
 Mrs. Cynthia Robinson  
 Mr. F. Gregg Robinson  
 Mr. Richard Rock  
 Mrs. Sue Rodi  
 Ms. Mary Jo Rodriguez  
 Ms. Monica Rollins  
 Mrs. Libbie Romigh

Mr. Terry Romigh  
 Mr. Richard Rose  
 Mrs. Violet Ross  
 Mrs. Marian Ross  
 Mr. Alan Roth  
 Mr. John Rouse  
 Mrs. Deborah Rowland  
 Mrs. Melissa Ruggles  
 Mrs. Joan Runion  
 Mrs. Linda Russell  
 Dr. Jane Russell  
 Mrs. Lynne Russell  
 Mrs. Cindy Russell  
 Dr. D. Todd Russell  
 Mrs. Nancy Russo  
 Mrs. Suzanne Rutan  
 Mr. Robert Ruth  
 Mrs. Debra Rutledge  
 Mr. David Rutter  
 Mrs. Jeanne Rydzak  
 Mr. James Rydzak  
 Mr. Frank Sachire  
 Dr. Thomas Salmon  
 Dr. Richard Saltsman  
 Mrs. Sally Sampson  
 Mrs. Michelle Sams  
 Mrs. Kathleen Samuel  
 Mrs. Janice Sanders  
 Mrs. Karen Sands  
 Mrs. Margery Sangree  
 Mr. Roberts Sargent  
 Mr. Joel Sassa  
 Mrs. Kathleen Sassa  
 Mr. Richard Sauers  
 Mrs. Carma Sauers  
 Mrs. Anne Saylor  
 Mrs. Mary Scamman  
 Mrs. Laurie Scarpitti  
 Mr. David Scarpitti  
 Mr. John Scarpitti  
 Mrs. Kathryn Scarpitti  
 Dr. Vicki Schaeffer  
 Mrs. Jane Schauss  
 Miss Carol Schiffler  
 Mr. Charles Schillig  
 Mrs. Susan Schillig  
 Mrs. M. Joan Schmidt  
 Mr. Carl Schneider  
 Mrs. Nancy Schneider  
 Mrs. Lisa Schneider  
 Miss Marilyn Scholz  
 Mr. David Schooler  
 Mr. James Schory  
 Miss Sally Schweitzer  
 Miss Deborah Schwendiman  
 Mrs. Barbara Scott  
 Mr. Bruce Sedgwick  
 Mrs. Lynne Sedgwick  
 Mrs. Debbie Seime  
 Mr. James Sements  
 Mrs. Jill Sements  
 Ms. Elaine Sempier  
 Mr. James Shaeffer  
 Mrs. Janet Shafer  
 Mrs. Marcia Shaffer  
 Mr. Michael Shaheen  
 Dr. Louis Shaheen  
 Ms. Lora Shank  
 Mrs. Linda Sharp  
 Mrs. Laurie Shaub  
 Atty. Earl Sheehan  
 Mrs. Nancy Sheehan  
 Dr. Richard Sheehan  
 Mrs. Betty Sheetz  
 Mrs. Judith Sheetz  
 Mr. Brian Sheetz  
 Mrs. Christine Sheetz  
 Mrs. Noel Shepard  
 Mrs. Marian Shern  
 Mr. Karl Shetler  
 Mrs. Deanna Shetler  
 Mr. Richard Shields  
 Mrs. Cheryl Shields  
 Mr. Jack Shoffner  
 Mrs. Mary Shollenberger  
 Mrs. Janice Siefers  
 Mr. Robert Siefers  
 Mr. Michael Silk  
 Mrs. Joy Silverhart  
 Mrs. Joyce Simmeling  
 Mrs. Barbara Simmons  
 Mr. Kent Simmons  
 Mrs. Jacquelyn Simons  
 Mrs. Linda Simpson  
 Mrs. C. Richard Singer  
 Dr. Dorothy Sisk  
 Mrs. Genevieve Sivula-Phillips  
 Dr. Stephen Sivulich  
 Mr. Len Slack  
 Mrs. Lynda Slack  
 Mrs. Gail Slezak  
 Ms. Linda Slicker  
 Mrs. Jean Slutz  
 Dr. Lawson Smart  
 Mrs. Meredith Smart  
 Mrs. Rae Smedley  
 Mr. C. Richard Smith  
 Mrs. Dottie Smith  
 Mr. Nathan Smith  
 Mr. James Smith  
 Mrs. Patricia Smith  
 Mrs. Beverly Smith  
 Mr. Donald Smith  
 Mr. Edward Smith  
 Mrs. Helen Smith  
 Dr. James Smith  
 Mr. Albert Smith  
 Mrs. Carolyn Snode  
 Mrs. Monica Rollins  
 Mrs. Phyllis Sohn



*Alumni like Pete Gligor '62, pictured with Patti Schaefer, are recognized for their years of dedicated support with membership in the Forever Mount Society.*

Mrs. F. Ellen Sol  
 Dr. Charles Song  
 Mr. Lynn Sontum  
 Ms. Jeffrey Southworth  
 Mr. David Spangler  
 Mrs. Karen Spangler  
 Miss Betty Sparr  
 Ms. Linda Spear  
 Mrs. Susan Spears  
 Ms. Lora Shank  
 Dr. Robert Speer  
 Mrs. Mildred Spencer  
 Mrs. Eleanor Spencer  
 Rev. Gregory Spencer  
 Mrs. Karen Spiker  
 Mr. William Spiker  
 Rev. Elizabeth Spiker  
 Mrs. Carole Spiker  
 Mr. William Spiker  
 Mrs. Claire Springer  
 Mrs. Evelyn Stafford  
 Dr. Brian Stafford  
 Mrs. Martha Stafford  
 Mr. Jeff Stambaugh  
 Mr. John Stamm  
 Mrs. Dorothy Stanley  
 Mr. Keith Stanley  
 Mrs. Kay Starkey  
 Mr. James Steel  
 Mrs. Kathleen Steel  
 Mr. John Steele  
 Mrs. Merabeth Steffen  
 Mr. Arthur Stehlik  
 Dr. Jennifer Stevens  
 Rev. Charles Stewart  
 Mrs. Stephanie Stitzel  
 Mrs. JoAnn Stocker  
 Mrs. Mary Ann Stockum  
 Mr. Lewis Stoffler  
 Mr. David Stoffka  
 Mrs. Laura Stone  
 Mrs. Patricia Stone  
 Atty. D. Stephen Stone  
 Mr. J. Randolph Stonesifer  
 Mrs. Bonnie Stoops  
 Mrs. Sally Stradley  
 Mr. George Stradley  
 Mr. Richard Stradley  
 Mr. Robert Strand  
 Mrs. Lynne Strasser  
 Mr. Philip Strasser  
 Miss Nancy Strauch  
 Mrs. Lynne Streeter  
 Mrs. Janice Strickland  
 Mr. Virgil Stroia  
 Mrs. Betsy Strubbe  
 Mr. Jon Strubbe  
 Ms. Kathy Stugmyer  
 Mr. Thomas Stugmyer  
 Dr. Mary Sturm  
 Mrs. Jaqueline Stutz  
 Mrs. Mary Sudolnik

Mrs. Margaret Sulser  
 Mrs. Flora Sun  
 Mr. Frederick Sun  
 Mr. William Sutton  
 Mr. Gary Sutton  
 Mrs. Linda Sutton  
 Mrs. Martha Jane Svoboda  
 Mr. Jerry Swaine  
 Mr. R. Dean Swaldo  
 Mrs. Ann Swartz  
 Mr. David Swartz  
 Mrs. Ruth Anne Swift  
 Dr. Paul Swinderman  
 Mrs. Laura Switzer  
 Mr. James Switzer  
 Mrs. Diane Syfer  
 Mrs. Norma Tache  
 Mrs. Joyce Tagliaterra  
 Mr. Ralph Tamper  
 Dr. Edwin Tan  
 Mr. Douglas Tarr  
 Mr. Mark Taylor  
 Mrs. Beth Taylor  
 Mr. Terence Taylor  
 Mr. Burt Taylor  
 Mrs. Nancy Taylor  
 Ms. Edie Taylor  
 Mrs. Donna Taylor  
 Col. Eugene Taylor  
 Ms. Joni Teragawachi  
 Mrs. Barbara Tereshko  
 Mrs. Martha Thatcher  
 Mr. F. Michael Theriault  
 Mrs. Lynda Theriault  
 Dr. James Thoma  
 Mrs. Suzan Thomas  
 Mrs. Marcia Thomas  
 Mr. Paul Thomas  
 Mrs. Stella Thomas  
 Ms. Sandra Thomas  
 Mr. Timothy Thompson  
 Ms. Patricia Thomson  
 Ms. Lee Ann Thorn  
 Mrs. Adriann Thornberry  
 Mr. Jeff Thornberry  
 Mr. Robert Thorpe  
 Dr. Christopher Tighe  
 Mrs. Sherry Tighe  
 Mrs. Gretchen Timmons  
 Mr. Curtis Tinlin  
 Mr. Ralph Toalston  
 Mr. J. Terry Tolerton  
 Mrs. Joyce Tolerton  
 Ms. Amy Tomko  
 Mrs. Marjorie Topoleski  
 Mrs. Donna Trace  
 MAJ William Trask  
 Mrs. Carol Traxinger  
 Mrs. Judith Treacy  
 Mrs. Rosine Trieff  
 Mr. Martin Tschantz

Mrs. Sandra Tucker  
 Mr. Edward Turner  
 Dr. Truman Turnquist  
 Mr. Ward Tuttle  
 Mr. Robert Underhill  
 Mr. James Underwood  
 Mr. Bill Ungar  
 Mr. Bradley Urbon  
 Dr. Geoffrey Utterback  
 Mrs. Carole Van Abel  
 Mrs. Carol Vargo  
 Mr. Ronald Vargo  
 Dr. Dean Varian  
 Mr. Richard Vaughan  
 Mr. Loren Veigel  
 Rev. David Venter  
 Mrs. Barbara Verbus  
 Mr. John Vovos  
 Mrs. Carolyn Wadelin  
 Mr. Gerald Wagner  
 Dr. Harold Walker  
 Mr. Daniel Waller  
 Mr. Ronald Walter  
 Mrs. Marilyn Walter  
 Mrs. Sally Walters  
 Mrs. Brenda Wardeska  
 Dr. Jeffrey Wardeska  
 Mr. Michael Wardle  
 Mr. Dennis Warstler  
 Mr. Harry Watkins  
 Mrs. Linda Watson  
 Mr. Charles Watts  
 Mrs. Judith Watts  
 Dr. David Wavrek  
 Mrs. Beth Ann Wavrek  
 Mrs. Linda Wead  
 Mr. Robert Weals  
 Mr. Jack Wearstler  
 Mrs. Karen Weaver  
 Mr. Normand Weaver  
 Mr. James Webb  
 Ms. Linda Webb  
 Dr. David Weber  
 Dr. Charles Weick  
 Mr. Rudy Weidert  
 Miss Cynthia Weikart  
 Mrs. Shirley Weimer  
 Mrs. Esther Wells  
 Mrs. Linda Wells  
 Mrs. Mary Lou Wells  
 Mrs. Diana Wellspring  
 Mr. Neil Wenger  
 Mr. Gary Wenning  
 Mrs. Jennifer Wenning  
 Dr. Joyce West  
 Mrs. Dona West  
 Mrs. Amy Wheeler  
 Mr. Scott Whetstone  
 Mrs. Paula Whetstone  
 Mrs. Laura Whinery

Mrs. Karen Whitacre  
 Mr. R. White  
 Rev. Paul White  
 Mrs. Dolores Wiegand  
 Mrs. Dorothy Wier  
 Mrs. Lillian Williams  
 Mrs. Judith Williams  
 Mr. Bill Williams  
 Ms. Judith Willour  
 Dr. David Wilson  
 Rev. John Wilson  
 Mrs. Beverly Wilson  
 Mr. W. Mac Wilson  
 Mrs. William Wilson  
 Mr. William Wilson  
 Mrs. Leigh Ann Wilson  
 Mrs. Alyson Wilson  
 Mrs. Denise Wilson  
 Rev. Robert Wilson  
 Mr. Dean Wilson  
 Mrs. Janet Windmeier  
 Dr. Richard Wise  
 Mr. Daniel Wismar  
 Mrs. Cynthia Wismar  
 Mr. Jeffrey Wojtowicz  
 Dr. Michael Woloschak  
 Mr. David Wolpert  
 Mrs. Debby Wolpert  
 Mrs. Deborah Wooding  
 Mr. Gary Wooding  
 Mr. James Woodruff  
 Mr. Gordon Woolbert  
 Mr. David Worth  
 Mrs. Paula Worth  
 Mrs. Cynthia Wright  
 Ms. Mary Wright  
 Dr. Jean Wrightmour  
 Mrs. Ellen June (E.J.) Wulf  
 Mr. Gary Wulf  
 Mr. William Wyrick  
 Mrs. Lora Wyss  
 Mr. William Wyss  
 Mrs. Carol Yeagley  
 Mr. Albert Yeagley  
 Mrs. Marilyn Young  
 Mrs. Gail Young  
 Mr. Gerald Zaborsky  
 Mrs. Sarah Zacks  
 Mr. Joseph Zelasko  
 Mr. Ralph Zemde  
 Mr. Robert Zimmerman  
 Mrs. Luella Zink  
 Mr. Gary Zony  
 Mrs. Elizabeth Zried  
 Ms. Annalisa Zumber  
 Mrs. Barbara Zura  
 LTC Anton Zurbrugg  
 Mrs. Catherine Zurbrugg  
 Dr. Michael Zwilling



Loyal Mount Union Fund supporters investing at the leadership level of \$1,250 or more, like Mary (Dunlap '57) and John '57 Patterson, are recognized with membership in the 1846 Society.

# THE MOUNT UNION FUND

The Mount Union Fund is a critical source of revenue that underwrites virtually every aspect of a Mount Union education. Because of the generosity of alumni, employees, parents, and friends who provide gifts to The Mount Union Fund each year, our students are able to enjoy an exceptional educational experience. Annual support for The Mount Union Fund ensures scholarships are awarded, books are given to deserving students, study abroad experiences are made possible, and state-of-the-art equipment is added to the classroom. Unrestricted in nature, every gift to The Mount Union Fund is utilized where it is needed most and supports the operating costs essential to building quality into every aspect of college life. We are truly grateful for the nearly 3,000 donors who contributed to The Mount Union Fund this past fiscal year.



IN TOTAL MOUNT UNION  
FUND SUPPORT

HR-16

## THE MOUNT UNION FUND BY THE NUMBERS

**79.4%**  
FACULTY AND STAFF  
PARTICIPATION IN THE  
MOUNT UNION FUND

**3,051**  
TOTAL DONORS TO THE  
MOUNT UNION FUND

### 1846 SOCIETY

Our premier annual giving society, the 1846 Society, honors and recognizes those donors who share a special commitment to the advancement of the University. Through an annual investment at the leadership level of \$1,250 or more to The Mount Union Fund, donors become essential partners in our mission to prepare students for fulfilling lives, meaningful work, and responsible citizenship. The University salutes the following individuals who made a significant difference during the last fiscal year (July 1, 2018-June 30, 2019).

#### SIT LUX CLUB

\$25,000 and up  
Mr. and Mrs. Jim E. Costanzo  
Mr. and Mrs. James Oelschlager

#### ECKLER CLUB

\$15,000 - \$24,999  
Mrs. Violet G. Bica-Ross  
Mr. and Mrs. Matthew G. Darrah  
Mr. Sean M. Moore

#### CHAPMAN CLUB

\$10,000 - \$14,999  
Anonymous  
Anonymous  
Dr. and Mrs. Bradley D. Carman  
Mr. and Mrs. P. Roger Clay  
Dr. and Mrs. Richard L. Drake  
Mrs. Donna J. Ermlich  
Atty. and Mrs. John J. Flynn  
Mr. and Mrs. Timothy R. Graves  
Dr. and Mrs. Donald R. Gray  
Mr. and Mrs. Allen E. Green  
Mr. and Mrs. W. Michael Jarrett  
Mr. and Mrs. Daniel R. Keller  
Mrs. Eileen L. Lazear  
Mrs. Ann McDaniel  
Mr. and Mrs. Michael A. Parnell  
Mr. and Mrs. John F. Peters  
Mr. David R. Schooler  
Mr. and Mrs. Marcus L. Smith  
Mr. and Mrs. Lynn O. Sontum

#### CLARKE CLUB

\$5,000 - \$9,999  
Mr. and Mrs. Mark R. Allen  
Mr. and Mrs. Mark Bailey  
Mrs. Lynne Biery  
Mr. and Mrs. David M. Blank  
Mr. and Mrs. Flint J. Brenton  
Dr. and Mrs. Seth W. Brown  
Dr. and Mrs. Kenneth W. Chalker  
Judge and Mrs. R. R. Denny Clunk  
Mr. and Mrs. Richard L. Craig  
Mr. and Mrs. Robert L. Curry, Jr.  
Mr. and Mrs. Keith E. Downard  
Mr. and Mrs. James P. Eismont  
Mr. and Mrs. Donald E. Friedrich  
Mr. and Mrs. Scott R. Gindlesberger  
Ms. Nancy J. Gray  
Atty. Fred J. Haupt  
Mr. Gregory L. King  
Mr. and Mrs. William Lavery  
Dr. Michael W. Lindamood  
Mr. and Mrs. Richard T. Marabito  
Dr. April C. Mason  
Mr. and Mrs. Stephen McGalla  
Mr. and Mrs. John W. Morey, CLU  
Mr. and Mrs. Nicholas B. Russo  
Mr. and Mrs. Joel L. Sassa  
Dr. and Mrs. Lawson C. Smart  
Mr. and Mrs. George E. Stradley II  
Ms. Lee Ann Thorn



**FOUNDERS' CLUB**

\$2,500 - \$4,999  
 Mr. Mark William Altier  
 Mr. Thomas E. Barnhouse ^  
 Mr. and Mrs. Bruce R. Beeghly  
 Mrs. Bonnie J. Bernhardt  
 Mr. and Mrs. Robert W. Crispin  
 Mr. J. Dawson Cunningham  
 Ms. Betty J. Davis  
 Ms. Dorothy J. Davis  
 Dr. and Mrs. Edward L. Farnham  
 Mr. and Mrs. Todd D. Fisher  
 Mr. and Mrs. John L. Frazier  
 Mr. and Mrs. Bradley D. Gerber  
 Mr. and Mrs. Glenn E. Hamilton  
 Mr. and Mrs. Jeff L. Hattery  
 Dr. Debra J. Hazen-Martin  
 Dr. Laurel and Dr. Duane Heyman  
 Mr. and Mrs. Thomas Hoffman  
 Mr. Joseph W. Holliday  
 Mrs. Katherine P. Horne  
 Mrs. Marsha S. Howell  
 Atty. and Mrs. Jeffrey R. Jakmides  
 Mr. Chad V. Johnson  
 Mr. and Mrs. Chris A. Kern  
 Dr. and Mrs. William G. Krochta  
 Dr. and Mrs. Robert S. Kunkel, Jr.  
 Mr. and Mrs. David Lakso  
 Dr. Karen L. McLachlan  
 Ms. Janet A. McLean  
 Dr. W. Richard Merriman, Jr. and  
 Dr. Margot Kelman  
 Mr. and Mrs. Benjamin J. Moore  
 Mr. John B. Nolan  
 Mr. Eric A. Otto  
 Mrs. Charlene Pankuch  
 Mr. and Mrs. Michael K. Pauli  
 Mr. Thomas V. Petzinger  
 Dr. Virginia A. Rhodes  
 Mr. and Mrs. Thomas H. Sanders  
 Miss Marilyn S. Sanfilippo  
 Sangree Family Foundation  
 Mr. and Mrs. Stephen E. Shiring  
 Mrs. Megan M. Smith  
 Dr. and Mrs. Brian L. Stafford  
 Mr. and Mrs. Arthur D. Stehlik  
 Dr. Jennifer S. Stevens  
 Mr. David W. Stewart and Mrs.  
 Vilma Guiducci  
 Mr. Michael S. Stull  
 Mr. and Mrs. Aaron J. Swartz  
 Mr. and Mrs. James M. Switzer  
 Mr. and Mrs. Laurence E. Talley  
 Mr. Mark W. Taylor  
 Ms. Sandra L. Thomas  
 Mr. and Mrs. Gene A. Thorn III  
 Dr. and Mrs. Benjamin M.  
 Utterback  
 Mr. and Mrs. Robert W. Wakeham  
 Mr. and Mrs. Scott F. Whetstone

**PRESIDENT'S CLUB**

\$1,250 - \$2,499  
 Mr. and Mrs. Gary S. Adams  
 Mr. and Mrs. C. Peter Barth  
 Dr. and Mrs. James W. Bear  
 Mr. Robert L. Berrodin  
 Mr. and Mrs. Albert P. Blank  
 Mr. Brian S. Boucher  
 Mr. and Mrs. Will I. Bowdish  
 Dr. Jeffrey R. Breese  
 Mr. and Mrs. Robert L. Buchs  
 Mr. and Mrs. Alan Burkly  
 Mr. and Mrs. Roger D. Campbell  
 Dr. Carol E. Canavan and Mr. Milt  
 Webster  
 Mr. and Mrs. E. Dominic Capers  
 Mr. and Mrs. James R. Chester  
 Mr. and Mrs. Bruce E. Christoff  
 Dr. Nathan I. Chutas  
 Mr. and Mrs. Ross L. Clem  
 Atty. and Mrs. Dennis R. Clunk  
 Mrs. Emily R. Colontrelle  
 Mr. James A. Coombes  
 Mr. and Mrs. Timothy S. Cotton  
 Mr. and Mrs. Jonathan D. Cross  
 Mr. and Mrs. William A.  
 Cummings  
 Mr. and Mrs. Brad E. Custer  
 Dr. and Mrs. Daryl F. Daugherty  
 Atty. and Mrs. Samuel L. Douglass  
 Mr. and Mrs. Charles E. Durant, Jr.  
 Mr. and Mrs. James R. Durham  
 Mrs. Catherine S. Ellsworth  
 Mr. Thomas C. Flanigan  
 Dr. DeBow Freed  
 Mr. Terry and Mrs. Melissa  
 Gardner  
 Mr. and Mrs. Russ Geiger  
 Mr. and Mrs. Scott D. Gill  
 Mr. and Mrs. Bradley Goris  
 Mr. Daniel R. Griffith and Ms.  
 Marci Held  
 Mr. and Mrs. Christopher A.  
 Gundlah  
 Mr. and Mrs. Michael K. Haidet  
 Atty. and Mrs. Stephen D. Harris  
 Mr. and Mrs. Scott T. Harrison  
 Mr. and Mrs. Randall D. Hart  
 Rev. Dwight Hayes  
 Mr. and Mrs. Patrick D. Heddleston  
 Dr. Parmie and Dr. George Herman  
 Mrs. Betty Lou Honaker

Mr. and Mrs. Doug S. Hubert  
 Mr. and Mrs. David E. Jones  
 Dr. Judith Jones and Dr. Mary  
 Powers  
 Mr. and Mrs. David E. Jones  
 Mr. and Mrs. Brian D. Keller  
 Ms. Lynn Keller  
 Mr. Robert A. Kerr  
 Mr. Mark P. Kingston  
 Mr. and Mrs. Brian Klaus  
 Dr. and Mrs. Frederick N. Klippert  
 Mrs. Shirley J. Klocek  
 Dr. Harold M. Kolenbrander  
 Mr. and Mrs. Gary E. Lanzen  
 Mr. and Mrs. Michael W. Leonard  
 Mr. and Mrs. Garland Likins  
 Mrs. Patricia Linz  
 Mrs. Mary Ellen Lloyd  
 Mrs. Catherine B. Long  
 Mr. Jack L. Madison ^  
 Ms. Leigh A. Mainwaring and Mr.  
 Herb Spear  
 Mr. and Mrs. Tim M. Maloney, Sr.  
 Mr. and Mrs. Victor R. McCloskey  
 Mrs. Virginia McCready  
 Mr. and Mrs. David C. McCullough  
 Mr. David F. McFarland  
 Mr. David G. Menosky  
 Mr. and Mrs. David Mitchell  
 Mr. and Mrs. Joseph Donald  
 Montgomery, Jr.  
 Mr. and Mrs. Steve N. Moore  
 Mrs. Janis Morgan  
 Mr. and Mrs. Thomas P. Moushey  
 Dr. and Mrs. Philip L. Orwick  
 Ms. Julie A. Osredkar  
 Mr. and Mrs. Richard W. Painting  
 Mr. and Mrs. John B. Patterson  
 Mr. and Ms. Larry Paxton  
 Mr. and Mrs. Richard W. Pierson  
 Mr. and Mrs. Jason S. Prodonovich  
 Dr. R. K. Ramsayer ^  
 Mr. and Mrs. David E. Reichard  
 Dr. and Mrs. Joseph Rettig  
 Mr. and Mrs. James S. Ripple  
 Dr. and Mrs. Thomas D. Robinson  
 Mrs. Marian R. Ross  
 Dr. and Mrs. D. Todd Russell  
 Mrs. Lisa Schneider  
 Mr. and Mrs. William F.  
 Schumacher III  
 Mrs. Debbie A. Seime  
 Mr. and Mrs. Michael S. Shaheen, Jr.  
 Mrs. Betty A. Sheetz  
 Mr. and Mrs. Richard Kerry Shields  
 Dr. and Mrs. Larry D. Shinn  
 Dr. David and Dr. Jane Silk  
 Dr. and Mrs. James W. Simmelink  
 Dr. Niall W. Slater  
 Dr. and Mrs. James K. Smith, Sr.  
 Dr. and Mrs. Charles H. Song  
 Dr. and Mrs. Robert L. Speer  
 Mr. and Mrs. William E. Spiker  
 Rev. and Mrs. Virgil D. Springer  
 Kelly and Jonathan Stalls  
 Mr. Chris D. Stenberg  
 Mr. and Mrs. Stanley J. Stewart  
 Mr. Matthew P. Stinson  
 Mrs. Mary Ann Stockum  
 Miss Nancy R. Strauch  
 Mr. and Mrs. C. Reggie Thomas  
 Mrs. Elizabeth A. Thorpe  
 Mr. and Mrs. Edward J. Turner  
 Mr. Ward M. Tuttle  
 Mr. and Mrs. James R. Underwood  
 Mr. Charles T. Unger ^  
 Rev. and Mrs. David William  
 Venter  
 Mrs. Carolyn G. Wadelin  
 Mr. and Mrs. Kevin S. Wallace  
 Mr. and Mrs. Rudy Weidert  
 Mrs. Shirley A. Weimer  
 Mr. and Mrs. Scott F. Whetstone  
 Rev. Paul R. White  
 Dr. and Mrs. Douglas Wilcox  
 Mrs. Lillian G. Williams  
 Mr. and Mrs. Marcus Williams  
 Mr. and Mrs. David S. Wolpert  
 Dr. Jean A. Wrightnour and Mr.  
 Dan J. Lee  
 Mrs. E.J. McDonald Wulf  
 Ms. Annalisa F. Zumber  
 LTC and Mrs. Anton P. Zurbrugg,  
 USA (Ret.)

**YOUNG PURPLE RAIDER LEADERSHIP GIVING**

Ms. Ellis A. Beardsley  
 Mr. Michael H. Gates  
 Mr. Arthur J. Gioglio  
 Mrs. Katherine P. Horne  
 Ms. Megan M. Loetz  
 Mr. Brandon T. Lucas  
 Mr. Connor N. Mathis  
 Mr. Austin G. Olbrych  
 Mr. Ankit H. Patel  
 Mrs. Megan M. Smith  
 Mr. Adam C. Sopchak  
 Mr. Marcus Williams  
 Ms. Hannah L. Wingate

# RING, RING...

## OUR STUDENTS ARE REACHING OUT TO YOU

If you have received a phone call from one of our student callers, then you have experienced our Raider Relations Call Center hard at work. These students are tasked with representing the University and growing support for The Mount Union Fund. Our callers would love the opportunity to hear about your own Mount Union experience, share campus news, and invite you to give back to your University.

## IT'S AN ANNUAL EFFORT!

Among our many goals: one conversation with each alum, per year. If you haven't heard from a student yet, be on the lookout for a call in the new year. They are not only calling to ask for support but also to share updates and to thank our generous donors for the great opportunities and experiences they are enjoying at Mount Union.

**ALEXANDRA HILL**

YEAR  
Sophomore

MAJOR  
Human Development  
and Family Science



**KADIE PLATT**

YEAR  
Junior

MAJOR  
Human Development  
and Family Science



**ALEXIS SCHRADER**

YEAR  
Junior

MAJOR  
Nursing



**MACKENZIE WEBER**

YEAR  
Junior

MAJOR  
National Security and  
Foreign Intelligence  
Analysis and  
International Affairs  
and Diplomacy



**ALYSSA CARNIVALE**

YEAR  
Senior

MAJOR  
Public Health and  
Spanish



**MALIK PELOSO**

YEAR  
Freshman

MAJOR  
Music Education



# M E E T T H E T E A M

**BRANDON MAXWELL**

YEAR  
Sophomore

MAJOR  
Accounting and Sport  
Business



**RACHEL HAWK**

YEAR  
Sophomore

MAJOR  
Exercise Science



**FRANKIE BOWMAN**

YEAR  
Junior

MAJOR  
Middle Childhood  
Education



**TERRA WILLIAMS**

YEAR  
Freshman

MAJOR  
Art (Graphic Design  
Concentration) and  
Integrated Media



**JORDAN ST. JOHN HIATT**

YEAR  
Junior

MAJOR  
Public Relations



**TYLER DA SILVA**

YEAR  
Sophomore

MAJOR  
Sport Business and  
Integrated Media



Each ^ denotes deceased.



*It is through the generosity of our alumni and friends that we are able to give students the opportunity to excel in their academics while also giving them the chance to create relationships and memories that will last forever.*

# ALUMNI AND FRIENDS

All gifts to Mount Union are recognized by class year or by affiliated group on the following pages.

## ALUMNI

### CLASS OF 1918

\$15,000 - \$24,999  
Dr. Roland Jones\*+^

### CLASS OF 1923

\$5,000 - \$9,999  
Ms. Phyllis A. Crook\*+^

### CLASS OF 1935

\$1,250 - \$2,499  
Atty. Michael S. Shaheen, Sr.\* ^

### CLASS OF 1940

\$500 - \$1,249  
Mrs. Ruth A. (Leonard) Schafer\* ^

### CLASS OF 1942

\$500 - \$1,249  
Ms. Mary (Shilts) Boster\* (M)  
\$200 - \$499  
Mrs. Lois A. (Stanley) McCrea\* (M)

### CLASS OF 1943

\$200 - \$499  
Mr. Robert A. Hively\* (M)

### CLASS OF 1944

\$25,000 AND UP  
Mrs. Violet G. (Bica) Ross\*+ (M)  
\$1,250 - \$2,499  
Mr. David F. McFarland\* (M)

### CLASS OF 1945

\$10,000 - \$14,999  
Mrs. Martha L. (Johnson) Gilbert\*+^(M)

\$5,000 - \$9,999  
Mrs. Martha J. (Nicholson) Orwick\*+ (M)  
\$100 - \$199  
Mrs. Shirley (Maharidge) Pinkerton\*

### CLASS OF 1946

\$25,000 AND UP  
Mrs. Eileen L. (Sterrett) Lazear\*+ (M)

\$5,000 - \$9,999  
Dr. T. J. Maxwell\* ^

\$1,250 - \$2,499  
Rev. Dwight Hayes\* (M)  
Mrs. Virginia (Saffell) McCready\* (M)

\$100 - \$199  
Dr. Robert L. Evans  
Mrs. Ruth Anne (Myers) Swift\* (M)

### CLASS OF 1947

\$1,250 - \$2,499  
Mrs. Ellen June (E.J.) (McDonald) Wulf\* (M)

\$500 - \$1,249  
Mrs. Alyce A. (Springer) Hall\* (M)  
\$200 - \$499  
Mr. James R. Halls\*+ (M)  
\$100 - \$199  
Mrs. Nancy A. (Newton) Sheehan\* (M)

### CLASS OF 1948

\$5,000 - \$9,999  
Mrs. Martha W. (Lutz) Unger\*+^(M)  
\$1,250 - \$2,499  
Mrs. Betty Lou (Baker) Honaker\*

\$500 - \$1,249  
Dr. Walter Wollam\* (M)

\$200 - \$499  
Dr. Joy E. Lawrence\* ^

\$100 - \$199  
Atty. Earl C. Sheehan\* (M)

Donors

Mrs. Kitty L. (Scheehle) Burris\*

### CLASS OF 1949

\$5,000 - \$9,999  
Mr. Charles T. Unger\*+ (M)  
\$1,250 - \$2,499  
Mrs. Carolyn G. (Walker) Wadelin\* (M)

\$500 - \$1,249  
Mr. Harold L. Hall\* (M)  
Mrs. Theresa M. (Minor) Koprivier\* (M)  
Mrs. Mary L. (Rinner) Maag\*  
\$200 - \$499  
Mrs. Arlene C. (Kemery) Akerman\* (M)  
Mrs. Shirley P. (Purtell) Bickel\* (M)  
Mrs. Martha J. (Grenfell) Hostetler\* (M)  
Dr. Charles B. Ketcham\* (M)

\$100 - \$199  
Mr. Wilbur M. Birthelmer\* (M)

Donors

Mr. Charles P. Krekas\* (M)  
Mr. Edwin J. Marini\*  
Dr. Richard M. Wise\* (M)  
Mrs. Ellen M. (Smith) Wright

### CLASS OF 1950

\$15,000 - \$24,999  
Mr. Jack L. Madison\*+^(M)

\$200 - \$499  
Mr. Arthur B. Bell\* (M)  
Mrs. Eleanor M. (Meacham) Broscoe\*

Mrs. R. Joanne (Donaldson) Corey\*  
Mrs. Nancy S. (Sampson) Hank\* (M)  
Mrs. Joyce P. (Parker) Ketcham\* (M)  
Mr. Earl D. Kilchenman\*  
Mr. Albert Prazniak\* (M)  
Mr. Robert D. Ramsey\*+ (M)

\$100 - \$199  
Mrs. Lila M. (Boyer) Brown\* (M)  
Mr. George E. Mani\* (M)  
Mr. Robert T. Ruth\* (M)  
Dr. William O. Wild

Donors

Mr. Harry F. Geltz\* ^  
Mr. Norman F. Larson, Sr.\* (M)  
Mr. Jack E. Miller\*+ (M)  
Mr. Martin L. Tschantz, Jr.\* (M)  
Dr. Harold R. Walker\* (M)

### CLASS OF 1951

\$10,000 - \$14,999  
Mrs. Donna J. (Elliott) Ermlich\* (M)  
Mrs. Suzanne C. (Ellsworth) Hilbush\* ^

\$5,000 - \$9,999  
Judge R. R. D. Clunk\*+ (M)  
\$1,250 - \$2,499  
Mrs. Margaret K. (Kinsey) Rodman\*+^(M)  
Mrs. Elizabeth A. (Sonday) Thorpe\*+ (M)  
Mr. Ward M. Tuttle\* (M)

\$500 - \$1,249  
Mr. William M. Mihalyi\*+^(M)  
Dr. Richard D. Sheehan, M.D.\* (M)  
Miss Betty J. Sparr\*+ (M)

\$200 - \$499  
Mrs. Marilyn B. (Morgan) Harrison\* (M)  
Mr. Richard R. Horton\* (M)  
Mrs. Sarah A. (Dimit) Ramsey\*+ (M)

\$100 - \$199  
Mrs. Betty Jean (Boyer) Arndt  
Mrs. Jeane (Archer) Baylor\* (M)  
Mr. Donald E. Evans\* ^^(M)  
Mrs. Kay M. (Martin) Evans\* (M)  
Mrs. Pauline A. (Rankin) Mollenkopf\* (M)

Donors

Mr. Edward A. DiGregorio\*

Dr. W. P. Jones\*+ (M)

### CLASS OF 1952

\$10,000 - \$14,999  
Mr. Thomas V. Petzing\* (M)  
\$2,500 - \$4,999  
Dr. William G. Krochta\* (M)

\$1,250 - \$2,499  
Mr. Melvin P. Pucci\*+ (M)

\$500 - \$1,249  
Mrs. Joanne E. (Cole) Bhatta\*+^(M)

Rev. James H. Davis\* (M)  
Mr. J. Edward Pohjala\* (M)  
Dr. Paul B. Swinderman\* (M)

\$200 - \$499  
Mr. Clarence W. Miller, Jr.\* ^  
Mr. Walter D. Mueller\*

Mrs. Marian M. (Meacham) Shern\* (M)  
Mrs. Donna J. (Donaldson) Taylor\* (M)  
Col. Eugene T. Taylor, USAF\* (M)  
\$100 - \$199  
Atty. Shirley A. (Robb) Dubetz\* (M)  
Mr. Richard C. Masters\* (M)  
Mr. Richard F. Raebel\* (M)  
Mrs. Kathleen A. (Montgomery) Rickert\* (M)  
Atty. Alex J. Robertson\* (M)  
Mrs. Mary L. (Schmutzler) Shollenberger\* (M)  
Mrs. Martha Jane (Frary) Svoboda\* (M)  
Mrs. Norma L. (Wilhelm) Tache\* (M)  
Donors  
Dr. Howard B. Cobbs\*

### CLASS OF 1953

\$5,000 - \$9,999  
Dr. Donald W. Cox\* ^ (M)  
\$2,500 - \$4,999  
Mrs. Helen (Wright) Farnham\*+ (M)

\$500 - \$1,249  
Dr. Craig W. George\* (M)  
Mrs. Shirley A. (Overholt) George\* (M)  
Dr. Alfred E. Stockum\* ^ (M)

\$200 - \$499

Mrs. Emma Jean (Blattler) Gerhardt\* (M)  
Mr. Louis D. Giovanelli\* (M)  
Mr. Marvin W. Lautzenheiser\* (M)  
Mr. C. Richard Smith\* (M)  
Mr. Paul E. Thomas\* (M)

\$100 - \$199  
Mr. James L. Friend\* (M)  
Mr. William G. Gordon\*  
Mr. David E. Owens\*+ (M)  
Mrs. Laura J. (Merriman) Stone\* (M)  
Major William V. Trask, USAF (Ret.)\* (M)

Dr. Charles F. Weick\* (M)  
Mr. William D. Wilson\*+

Donors

Mrs. Ruth E. (Holmes) Buganski\* (M)  
Mrs. Marilyn C. (Gartrell) Fouss\*+ (M)

### CLASS OF 1954

\$2,500 - \$4,999  
Dr. Edward L. Farnham\*+ (M)  
\$1,250 - \$2,499  
Mr. Robert L. Buchs\* (M)

\$500 - \$1,249  
Mr. David W. Craytor\*+ (M)  
Mrs. Sheila M. (Sonday) Pohjala\* ^ (M)

\$200 - \$499  
Mrs. Phyllis (Adams) Brooks\* (M)  
Mrs. Phyllis S. (Spitler) Sohn\* (M)

\$100 - \$199  
Mrs. Nancy A. (Rohrbacher) Evans\* (M)  
Mr. Ray G. Goodrich\* (M)  
Mr. Robert A. Hanson\* (M)

### CLASS OF 1955

\$5,000 - \$9,999  
Ms. Nancy J. (Jones) Gray\*+ (M)  
Dr. Robert S. Kunkel, Jr.\* (M)  
Mrs. Mary Ann (Close) Stockum, RN\*+ (M)

\$2,500 - \$4,999  
Mrs. Judith K. (King) Douglass\*+ (M)  
Atty. Samuel L. Douglass\*+ (M)  
Mrs. Carolyn I. (Cowie) Krochta\* (M)

\$1,250 - \$2,499  
Mrs. Bobbie (Ports) Buchs\* (M)  
Mr. Charles R. Hartman\*

Mrs. Janis (Lympny) Morgan\* (M)  
Mrs. Carole M. (Evans) Spiker\* (M)  
Mr. William E. Spiker\* (M)

\$500 - \$1,249  
Mr. Vincent C. Obmann\* (M)  
Dr. Joyce A. (Smith) West\* (M)

\$200 - \$499  
Ms. Mary Jo Rodriguez\* (M)  
Mrs. Marcia A. (Miller) Thomas\* (M)  
Mrs. Dorothy C. (Hall) Wier\* (M)

\$100 - \$199  
Mrs. Mary E. (Howell) Friend\* (M)  
Mr. George R. Kellner\*+ (M)  
Mr. Richard R. Stoffler\* (M)

### CLASS OF 1956

\$5,000 - \$9,999  
Mr. John W. Morey, CLU\*+ (M)















- Code Chiro LLC
- Copeland Oaks
- Dow Cameron Oil & Gas LLC
- Elite Flooring & Countertops
- Falcone Brothers, Inc. DBA Falcone's Tavern
- Fastenal
- Griffith Carpentry
- Hilscher-Clarke
- Home Savings
- HP Products Inc
- Hunter Associates Investment Management LLC
- Independent Elevator Corporation
- Jem Graphics
- Johnson Controls
- JP Morgan Chase
- Linda DiNunzio Insurance Agency
- Magrock, Inc. DBA Gionino's Pizzeria
- Manhattan Cleaners
- McGarvey Heating Inc.
- Mickunas LLC DBA Majestic Trailer & Hitch
- Minerva Tile and Remodeling
- Oasis Lawn Care, Inc.
- Pag's Excavating Inc.
- Pioneer Athletics
- Pull-A-Part of Canton, LLC
- Rick's Stump Grinding
- Smucker's Company
- Sons of Richmond LLC
- SportsmanS
- Standard Plumbing and Heating
- Stark Tax Service
- Stewco LLC
- Stocks Draperies
- Summit North Lions Club
- The Gardiner Trane Company
- The M. Conley Company
- The Neighborhood Inn
- Traps Sports Center
- Union Title Company
- USI Insurance
- Vermilion Taverns Inc
- We Handle Travel
- Whole Shop Inc.
- Jerry Ambrecht
- Mr. David A. Barrett
- Ms. Saimi Bergmann\*
- Mr. and Mrs. Graham L. Bingley
- Sami Bowlin
- Mr. Robert Brennen\*
- Francis Carlson
- Michael Casco
- Mr. Chuang Chong
- Anthony Cox
- John Dan
- Mrs. Cynthia A. Ewing +
- Dr. John L. Ewing +
- Frances Figetakis
- Patricia Franks
- James Gauch
- Mr. and Mrs. Ronald Gelb
- James Gliebe
- Mrs. Ruth A. Goodrich\*
- Dr. Susan Griffith\*
- Donald Harris
- Mr. Dale Herbert
- H. L. Herrington
- Karen S. Holman
- Patrick J. Hyland
- Paul Knott
- Ronald Kuceyeski
- Judge and Mrs. Robert G. Lavery +
- Mrs. LuAnn R. Lenz\*+
- Michael A. Lesch
- Deana M. Lockner
- Dean Marini
- Trevor Marshall
- William Martig
- Mr. and Mrs. Ronald G. Martin\*
- John McAllister
- Mrs. Carol D. McCrea\*
- CJ Oechsle
- Jim Oesch
- Jeanne Ott
- Dr. Joseph A. Perez\*
- Mrs. Jennifer Pierce\*
- Suzan Piskur
- Mrs. Timothy Popa\*
- Stacia Rastauskas Bretherton
- Troy Reagan
- Vance Rosler
- Mr. Clyde Ross
- Larry Sakai
- Mr. Lester Sanders +
- Mrs. Barbara S. Saulitis\*
- Duane Sigmund
- Joseph P. Skubiak
- Ed Slopek
- Jean Slutz\*
- Mrs. Donald F. Smith\*
- Ms. Connie L. Smith\*
- Marilyn Splete
- Anna Jean Stefan
- Victor A. Stefan
- Ms. Rhonda Stutler
- MIZUKI YONEDA



ALUMNI



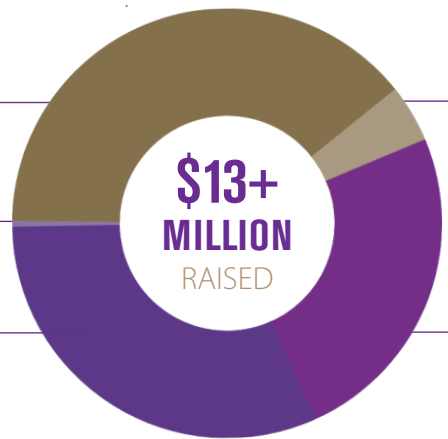
TRUSTEES

# SOURCES OF GIFTS

**ALUMNI**  
\$5,078,402

**PARENTS**  
\$54,702

**TRUSTEES**  
\$4,107,231



**CORPS/FOUNDS**  
\$3,192,640



PARENTS



FACULTY AND STAFF



FRIENDS



FOUNDATIONS

- Donors**
- Battelle Always Giving
  - Progressive Casualty Insurance Company
  - Robert Scott Foltz, D.D.S.
  - Scott Brown Consulting
  - STJ Federal Credit Union
  - Warkoczkes Family Revocable Trust
  - Mark E. Albrecht
  - Thomas Alexander
  - Michael Alfien



Mr. Gerard P. Mastroianni\*  
 Dr. W. Richard Merriman, Jr.  
 Mr. Sean M. Moore  
 Mr. David R. Schooler\*+ (M)  
 Mr. George E. Stradley II\* (M)

\$10,000 - \$14,999  
 Mr. Steven J. Barr\*  
 Dr. Victor J. Boschini, Jr.\* (M)  
 Dr. Bradley D. Carman, D.O.\* (M)  
 Atty. John J. Flynn\*+ (M)  
 Atty. Randall C. Hunt\*+ (M)  
 Mr. Daniel R. Keller\* (M)  
 Mr. Michael A. Parnell  
 Mr. Thomas V. Petzinger\* (M)  
 Mr. Marcus L. Smith\*

\$5,000 - \$9,999  
 Mrs. Lynne Biery\*+  
 Mr. Flint J. Brenton  
 Mrs. Ginger Brown\*  
 Mr. James P. Eison\*+ (M)  
 Mr. Scott R. Gindlesberger\*+ (M)  
 Atty. Fred J. Haupt\* (M)  
 Ms. Mei-Lin Khoo  
 Dr. Robert S. Kunkel, Jr.\* (M)  
 Dr. April C. Mason\*+ (M)  
 Mr. Joel L. Sassa\* (M)  
 Ms. Lee Ann (Johnston) Thorn,  
 CPA\*+ (M)

\$2,500 - \$4,999  
 Mrs. Judith K. (King) Douglass\*+ (M)  
 Mr. Chad V. Johnson\*+  
 Dr. William G. Krochta\* (M)  
 Mrs. Janice M. (DiNezza)  
 Sanders\* (M)  
 Mr. Laurence E. Talley +  
 Ms. Sandra L. (Goff) Thomas\* (M)

\$1,250 - \$2,499  
 Mr. Gary S. Adams\* (M)  
 Mr. Joel H. Beeghly\* (M)  
 Mr. Robert A. Kerr\*+ (M)  
 Dr. Larry D. Shinn\*  
 Mr. C. Reggie Thomas\*+

\$500 - \$1,249  
 Ms. Heidi K. Bartholomew\* (M)  
 Dr. Craig W. George\* (M)  
 Atty. Edward M. Kolesar\* (M)

\$200 - \$499  
 Dr. Richard L. Drake\* (M)  
 Mr. Dwight S. Jordan\*

## HONORARIUM GIFTS

In Honor of Jason D Argue '07  
 Mr. and Mrs. Tim E. Argue

In Honor of Jane E. Barrett '56  
 Ms. Susan Barrett Sullivan

In Honor of Richard E. Brown '69  
 Dr. and Mrs. Richard L. Drake

In Honor of Ronald R. Brown '60  
 Mr. Robert B. Brown

In Honor of Susan L. Buckel '73  
 Dr. Dan E. Buckel

In Honor of Kristin A. Burns '96  
 Mr. William E. and Mrs. Mary B. Porter

In Honor of George Bush Lincoln Carr '19  
 Mr. Devon J. Doran

In Honor of Grant Cook  
 Dr. and Mrs. James H. Ritchie, Jr.

In Honor of Eric L. Dietrich '96  
 Mr. Eric L. Dietrich

In Honor of Leonard G. Epp  
 Dr. Debra J. Hazen-Martin

In Honor of Harold L. Hall '49  
 Mr. Benjamin Au and Ms. Mei-Lin Khoo

Ms. Rika Awakihara  
 Mr. Chuang Chong  
 Dr. and Mrs. William E. Coleman  
 Mr. Todd H. Hall  
 Mrs. Shoko Kearney  
 Dr. Naoko Oyabu-Mathis and  
 Dr. James Mathis

Mr. and Mrs. Dennis J. Moriarty, Jr.  
 Ms. Chaity Roy  
 Mr. and Ms. Marlin Russell  
 Ms. Daphne L. Sim  
 Ms. Hiromi Sumiyoshi and Mr.  
 Bradley Hamm

Dr. and Mrs. James E. Thoma  
 Mr. Chris Wong

In Honor of Isaac Hendershot  
 Mr. and Mrs. Robert C. Hendershot

In Honor of Jennifer Lynn Hoffman '04  
 Ms. Jennifer L. Hoffman

In Honor of Cathie S. Johnson '69  
 Ms. Patricia Franks

In Honor of Robert G. King '33  
 Mr. and Mrs. Maxwell King

In Honor of Michael Knepp  
 Dr. and Mrs. Richard Frey

In Honor of Stephen Kramer  
 Mr. and Mrs. Jeffrey Breckenridge

In Honor of Daniel John McGeary '15  
 Mr. and Mrs. Dan McGeary

In Honor of Michael G. Muffet '67  
 Ms. Mary Ann McCready

In Honor of Philip L. Orwick '71  
 Mrs. Martha J. Orwick

In Honor of Melanie Prestage  
 Mrs. Melanie Prestage

In Honor of Melissa A. Ruggles '79  
 Mr. and Mrs. Jeffrey W. Ruggles

In Honor of Michael Schoepner  
 Mr. and Mrs. Ronald G. Martin

In Honor of Aiden Parker Shellhammer  
 Mr. and Mrs. Glen L. Shellhammer

In Honor of Len and Lynda Slack '69  
 Mr. and Mrs. Robert Cailor

In Honor of Megan Elizabeth Waterfield '18  
 Mr. and Mrs. Brian Waterfield

In Honor of Nachiketa Yakkundi '92  
 Mr. and Mrs. Nachiketa Yakkundi

## MEMORIAL GIFTS

In Memory of Diane Armbricht '57  
 Mr. Jerry Armbricht

In Memory of Janet Barker  
 Ms. Sandra K. Antonasanti  
 Mr. and Mrs. Kenneth Behner  
 Mr. and Mrs. Fred A. Bigham  
 Ms. Sami Bowlin  
 Dr. Carol E. Canavan and Mr. Milt Webster

Ms. Tamra J. Caruthers  
 Ms. Jean Dalesandro  
 Ms. Dorothy J. Davis  
 Ms. Barbara Ebert  
 Mr. and Mrs. W. Jeffrey Egli  
 Ms. Rebecca Facchini  
 Mr. David L. Furcolow  
 Mr. and Mrs. Robert P. Graham II  
 Mr. and Mrs. John E. Kavulla  
 Mr. and Mrs. Grant Conway  
 Mr. and Mrs. Blaine D. Lewis  
 Mr. Jack E. Miller  
 Mr. and Mrs. Dennis J. Moriarty, Jr.  
 Ms. Janet Oprandi  
 Mr. and Mrs. Duane Pontius  
 Ms. Diane J. Riley  
 Mr. David Runk  
 Mr. and Mrs. Dexter E. Sams  
 Mr. and Mrs. Brian Stuchell  
 Mr. and Mrs. Thomas R. Swartz  
 Ms. Karen M. Teal  
 Dr. and Mrs. James E. Thoma  
 Ms. Sandra Vild  
 Miss Carol Weastler

In Memory of Sydney C. Breyer  
 Dayton Foundation Depository, Inc.

In Memory of Curtis B. Coleman '43  
 Mr. William P. Coleman

In Memory of Sondra S. Craig '67  
 Mr. and Mrs. Joseph B. Eby

In Memory of Margaret M. Decker '69  
 Mr. and Mrs. Robert C. Dagenhardt

In Memory of Margaret A. Fullman '68  
 Mr. Douglas C. Fullman

In Memory of Spartico Galiati '55  
 Mrs. Sally D. Galiati

In memory of Loisann Goodall  
 Beta Psi Beta of Alpha Chi Omega

In Memory of Daniel M. Gorman  
 Mr. and Mrs. Jonathan K. Kessel

In Memory of Harold L. Hall '49  
 Mizuki Yoneda

In Memory of Victoria Ellen Haupt  
 Dr. and Mrs. Seth W. Brown

In Memory of Donald P. Herriott '67  
 Mr. and Mrs. Frank W. Sachire

In Memory of Suzanne C. Hilbish '51  
 Mrs. and Mr. Suzanne C. Hilbish

In Memory of William K. Hogg  
 Mr. and Mrs. James D. Hogg

In Memory of Jane G. Hubert  
 Dr. James G. Hubert

In Memory of Marc Warren Janser '50  
 Mrs. Roseann Janser

In Memory of Jackie Kehner  
 Mr. and Mrs. Richard Kehner

In Memory of Helen Kehres  
 Mr. Nick Pietrocola  
 Mr. Corey A. Unckrich  
 Mr. and Mrs. Craig Allen Unckrich

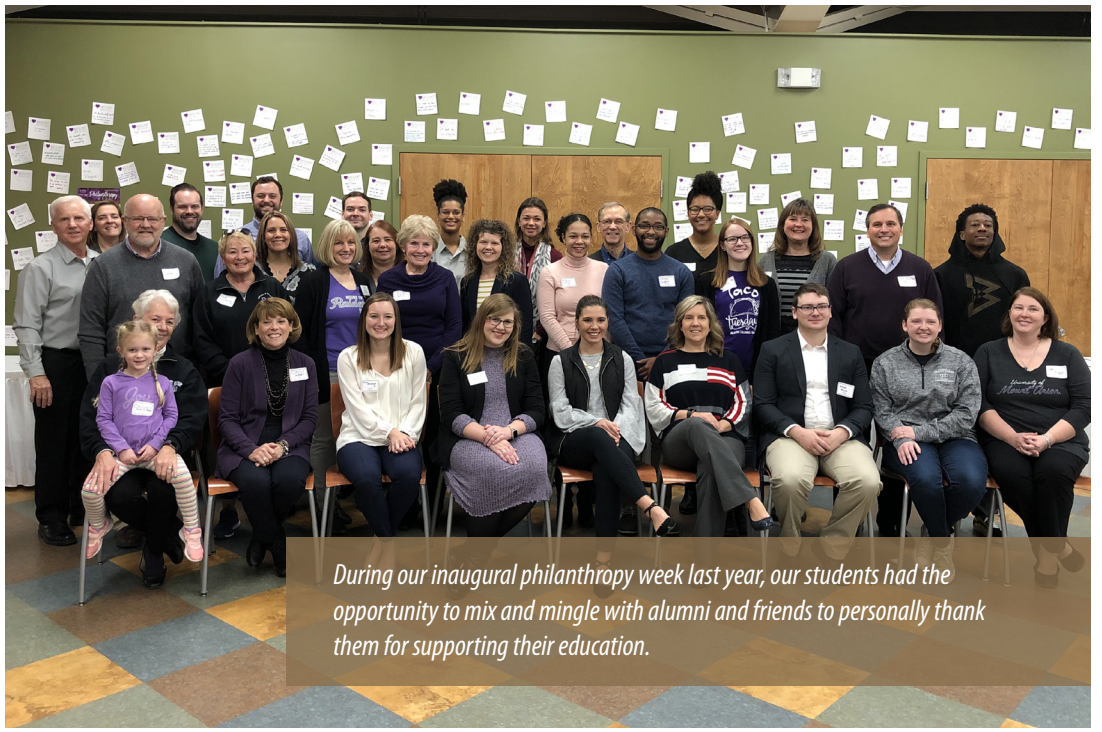
In Memory of David P. Keim '64  
 Mrs. Danielle Penturf Lamphier

In Memory of Warren V. Kindig '60  
 Mrs. Linda H. Kindig

In Memory of Robert T. King '73  
 Ms. Barbara Furlow



The Class of 2019 came together to "pay-it-forward" and raised \$43,711.17 in Mount Union Fund support to provide necessary scholarship assistance to rising seniors facing financial hardships. Together with their classmates, the Class of 2019 Endowed and Current scholarships were created making the dream of walking across the graduation stage possible for those in need.



During our inaugural philanthropy week last year, our students had the opportunity to mix and mingle with alumni and friends to personally thank them for supporting their education.

In Memory of Kathryn E. Koblentz '69  
 Mr. Robert A. Koblentz

In Memory of Laurie Kolenbrander  
 Anonymous  
 Greater Alliance Foundation Inc.

Mr. and Mrs. Harold Blankers  
 Dr. and Mrs. Seth W. Brown  
 Mr. and Mrs. M. J. Buitenwerf  
 Atty. and Mrs. Samuel L. Douglass  
 Atty. Fred J. Haupt  
 Dr. Kathleen Piker-King and Mr. Fred King

Mr. and Mrs. Duane Sigmund  
 Ms. Marilyn Splete  
 Ms. Bonita M. Twaddle

In Memory of Jessi Kossin  
 Ms. Rachel M. Brumenschenkel  
 Mr. and Mrs. Kenneth Kossin

In Memory of Jean Leuenberger  
 Home Savings  
 STJ Federal Credit Union  
 Mr. and Mrs. William Blackmer  
 Mr. Charles O. Carlson  
 Mr. and Mrs. Richard Doty  
 Mr. and Mrs. Carl Pancake  
 Mr. and Mrs. Phillip Renner  
 Mr. Roy T. Rhodes  
 Mr. and Mrs. Leo Schumacher  
 Mr. and Mrs. Joseph Shaheen

Mr. and Mrs. Glenn A. Shook  
 Mr. and Mrs. Jeffrey Strasser  
 Ms. Bonita M. Twaddle  
 Mr. and Mrs. Donald Unkefer  
 Mr. and Mrs. Jay P. Whitman

In Memory of James Lombardi  
 Wenger Excavating, Inc.  
 Robert Scott Foltz, D.D.S.

In Memory of Dale Loudin  
 Mr. and Mrs. Lynn N. Oehling

In Memory of James E. Mackey '52  
 Mr. David A. Barrett  
 Mr. and Mrs. Anthony Cox  
 Frances Figetakis  
 Ms. Elizabeth Koch Gilmore  
 Ms. Karen Sondles Holman  
 Dr. and Mrs. William G. Krochta  
 Mrs. Carolyn Mackey  
 Mr. and Mrs. Robert A. Parks  
 Mrs. Lenora June Pulcini  
 Mr. Robert D. Sondles  
 Ms. Susan Barrett Sullivan

In Memory of Lanka Maldonado '43  
 Mr. J. M. Maldonado

In Memory of Lynn C. Mellott '69  
 Ms. Nancy C. Ashcom

In Memory of Margaret A. Mihalyi '49  
 Mr. William M. Mihalyi

In Memory of Clarence W. Miller '52  
 Ms. Lois A. Miller

In Memory of Donna J. Miller '51  
 Beta Psi Beta of Alpha Chi Omega

In Memory of Jane E. Moncrief '46  
 Mr. and Mrs. Richard K. Elias  
 Dr. and Mrs. Brian L. Stafford

In Memory of Joe P. Perez  
 Mr. David O. Connelly

In Memory of Mary A. Regula '49  
 Dr. and Mrs. Seth W. Brown

In Memory of Willard and Vivian Richards  
 Mr. James E. Kimble, Jr. and Dr. Pamela Kay (Richards) Kimble

In Memory of Donald A. Rizzo  
 Ms. Lisa A. Rizzo

In Memory of Nancy J. Sakai '68  
 Mr. Larry Sakai

In Memory of Kenneth Shears  
 Mr. and Mrs. James W. Stoops

In Memory of Eugene J. Shuman '66  
 Mr. C. J. Oechsle

In Memory of David L. Snyder '66  
 Dr. and Mrs. Richard A. Whinery

In Memory of Cecil Stewart  
 Rev. and Mrs. Leslie A. Peine

In Memory of Marilyn K. Sutton '66  
 Mr. and Mrs. G. Robert Chambliss

In Memory of Arden E. Tuttle '52  
 Beta Psi Beta of Alpha Chi Omega

In Memory of Kenneth Wable  
 Ms. Dorothy J. Davis  
 Mr. and Mrs. Douglas A. Deas  
 Mr. and Mrs. Paul G. Gulling  
 Mr. Dale Herbert  
 Mr. and Mrs. Woody S. McCallum  
 Mr. and Mrs. Joseph Donald Montgomery, Jr.  
 Ms. Patricia J. Prichard  
 Mr. and Mrs. E. Ruhnke  
 Mr. and Mrs. James D. Sellers  
 Mr. and Mrs. David E. Ward  
 Mr. and Mrs. Gary P. Wenning

In Memory of Carol A. Weber '56  
 Mr. Shirley A. Weimer

In Memory of David G. Weber '34  
 Dr. and Mrs. David S. Weber

In Memory of John D. Williams '57  
 Mr. and Mrs. Robert Nienaber  
 Mrs. Lillian G. Williams

In Memory of Janet Wuske  
 Ms. Sheryl McKesson

In Memory of Adrian F. Zumber '87  
 Ms. Annalisa F. Zumber

Each \* represents 10 or more years of giving. Each + represents increased giving. Each ^ denotes deceased. Each (M) represents Forever Mount Society.



*Chad Johnson '07 (left) and Robert Kerr '89 (right) have been committed members of the Alumni Association Executive Board, serving most recently as vice president and president respectively.*

# VOLUNTEERS

## ALUMNI ASSOCIATION

The purpose of the Alumni Association is to be actively engaged in activities that promote and provide leadership to the University.

Mr. Scott H. Berkeley '80  
Mr. Chris J. Bondra '10  
Mrs. Amanda (Moore) '11  
Bridenstine  
Ms. Daria A. Chalupa '17  
Mr. Christopher L. Cugini '13  
Ms. Teale N. Harold '11  
Mr. Randall D. Hart '89  
Mr. Marcus J. Jackson '08  
Mr. Chad V. Johnson '07  
Mr. Anthony Jones '06  
Mr. Robert A. Kerr '89  
Ms. Jamie L. McMillen '02  
Mrs. Stephanie L. (Novak) '12 Skitko  
Mrs. Melissa (Schumacher) '79)  
Ruggles  
Mrs. Cindy (Aurslanian) '89) Russell  
Ms. Mikey Serensky '08  
Mrs. Jennifer (Thurin) '03) Slack  
Mr. Len Slack '69  
Mrs. Alicia K. (Switzer) '13) Nickels  
Ms. Elizabeth A. Schaefer '11  
Mrs. Amanda (Darrah) '05) Waesch  
Mr. Nick M. Walker '11

## BOARD OF TRUSTEES

Members serve in a policy-making role and provide financial support and management, represent the University to the public, assure the maintenance of the physical plant, serve as a court of final appeal, assess the institution's performance, and have administrative accountability for the Office of the President.

### 2018-2019 Officers

Mr. Allen E. Green '77  
Chair  
President, H-P Products, Inc.  
Mr. Matthew G. Darrah '84  
Vice Chair  
Consultant, Darmac LLC

### 2018-2019 Members

Mr. Gary S. Adams '75 (E)  
Retired

Mr. Steven J. Barr '88 (E)  
Partner, PricewaterhouseCoopers, LLP

Ms. Heidi K. Bartholomew '92  
Clinical Assistant Professor of  
Business Administration, The  
University of Pittsburgh Katz  
Graduate School of Business

Mr. Joel H. Beeghly '64 (E)  
Retired Senior Technical/Research  
Specialist, Carmeuse Lime and  
Limestone Co.

Mrs. J. Lynne Biery  
Owner/Innkeeper, Sebring  
Mansion Inn and Spa

Mr. Paul R. Bishop (E)  
Chairman and Chief Executive  
Officer, H-P Products, Inc.

Dr. Victor J. Boschini '78  
Chancellor and Professor of  
Education, Texas Christian  
University

Mr. Flint J. Brenton '77  
President and Chief Executive  
Officer, CollabNet

Mrs. Ginger F. Brown (E)  
Retired

Dr. Bradley D. Carman '84  
Bradley D. Carman, D.O.,  
F.A.C.O.S., Marietta Health Care  
Physicians, Inc.

Rev. Dr. Kenneth W. Chalker '71  
Retired Senior Pastor, University  
Circle United Methodist Church

Mr. P. Roger Clay '61  
President, Rentwear, Inc.

Mr. James E. Costanzo '84  
Chief Executive Officer, Nordic

Mrs. Judith (King) '55) Douglass (E)  
Community Service

Dr. Richard L. Drake '72  
Director of Anatomy and Professor  
of Surgery, Cleveland Clinic  
Lerner College of Medicine of  
Case Western Reserve University

Mr. Gary S. Eismom '98  
Senior Financial Planner, Valic

Mr. John J. Flynn '71  
Attorney, Flynn, Keith, and Flynn  
Craig W. George, M.D. '53 (E)  
Retired Ophthalmologist

Mr. Scott R. Gindlesberger '87 (E)  
Senior Vice President, Stifel Nicolaus

Mrs. Suzan Goris  
Retired Co-Owner, Goris  
Properties, LLC

Dr. Sylvester Green '64 (E)  
Retired National Chairman/  
Consultant, Green Rolle  
Consulting, LLC

Dr. Fred J. Haupt '63  
Of Counsel, Krugliak, Wilkins,  
Griffiths, & Dougherty Co., L.P.A.

Dr. Nancy Hill '79  
Founder and Chief Executive  
Officer, Media Sherpas, LLC

Mr. Randall C. Hunt '75 (E)  
Shareholder/Director, Krugliak,  
Wilkins, Griffiths, & Dougherty  
Co., L.P.A.

Mr. W. Michael Jarrett '87  
President and Chief Executive  
Officer, Jarrett Companies, Inc.

Mr. Chad V. Johnson '07  
Tax Senior Manager, Deloitte Tax LLP

Mr. Dwight S. Jordan '71  
President, Jordan Realty, Inc.

Mr. Daniel R. Keller '72  
Chairman, Keller Capital, LTD.

Mr. Robert A. Kerr '89  
Executive Vice President, National  
Association of Enrolled Agents

Dr. Harold M. Kolenbrander (H)  
President Emeritus, University of  
Mount Union

Dr. William G. Krochta '52  
Retired, PPG Industries

Dr. Robert S. Kunkel, Jr. '55 (E)  
Retired Staff, Cleveland Clinic

Bishop Tracy S. Malone (EO)  
Bishop, The United Methodist  
Church - East Ohio Conference

Dr. April C. Mason '77  
Retired Provost and Senior Vice  
President, Kansas State University

Mr. Gerard P. Mastroianni  
President, Alliance Ventures

Dr. W. Richard Merriman, Jr. (EO)  
President, University of Mount Union

Mr. Sean M. Moore '97  
Partner, Cerity Partners

Dr. Vanita (Bauknight) '63) Oelschlager  
Retired, Oak Associates

Bishop Gregory V. Palmer (EO)  
Bishop, The United Methodist  
Church - Ohio West Episcopal Area

Mr. Michael A. Parnell '83  
Senior Vice President, Bemis  
Company, Inc.

Dr. John F. Peters  
Retired, Stifel Nicolaus

Mr. Thomas V. Petzinger '52 (E)  
Retired Captain, U.S. Navy  
Retired President, Pan Atlas Travel  
Service, Inc.

Mr. Joel L. Sassa '78  
Retired Executive, General Motors

Mr. David R. Schooler '68 (E)  
President, Town and Country  
Travel, Inc.

Miss Gretchen L. Schuler '96  
Vice President, Risk Management,  
Invacare Corporation

Dr. Larry D. Shinn  
Senior Consultant, AGB  
President Emeritus, Berea College

Dr. Dorothy A. (Denning) '58) Sisk (E)  
Endowed Professor, Lamar  
University

Mr. Marcus Smith '88  
Independent Director, Board of  
Directors, MSC1

Mr. George E. Stradley '58 (E)  
Partner, GS Realty

Mr. Laurence E. Talley '91  
Ohio Practice Director, Experis  
Finance

Mr. C. Reggie Thomas '87  
Vice President - Community  
Development Relationship Manager,  
Huntington National Bank

Ms. Sandra (Goff) '74) Thomas  
Retired Senior Vice President, JP  
Morgan Chase

Dr. Lee Ann (Johnston) '83) Thorn  
Executive Director, Atrium OB/  
GYN, Inc.

## BUSINESS ADVISORY COUNCIL

The council was established to provide necessary expertise and leadership to the Department of Business.

Mr. Daniel A. Bagnola '82  
Mrs. Libby (Snyder) '06) Bulso  
Mr. Allen E. Green '77  
Ms. Kristin C. Hannon  
Mr. Ray Hexamer  
Mrs. Dena (Shackle) '94) McKee  
Mr. Anthony J. Mercurio '95  
Mrs. Suzanne (Burtoft) '01) Mikes  
Mr. Patrick R. Olsen '07  
Mr. Dennis M. Postiy

Mr. Todd Pugh  
Mr. Andrew J. Rothermel '15  
Mr. William Shivers  
Ms. Caroline C. Stock '14  
Mr. Zak M. Suhar '13  
Dr. Linda Zucca

## ENGINEERING ADVISORY COUNCIL

The council was established to provide necessary expertise and leadership in the development and implementation of the undergraduate majors in engineering.

Mr. Joel H. Beeghly '64  
Ms. Taylor M. Cline '16  
Mr. Wayne V. Denny, Jr. '92  
Dr. Colin K. Drummond  
Mr. Mark L. Fedor  
Mr. Tyler Harbert  
Mr. Patrick J. Hyland, Jr.  
Dr. Michael R. Lightner  
Mr. John Picuri  
Mr. Dale Pittman  
Mr. Joseph N. Powell '17  
Mrs. Amanda Richardson  
Dr. Shuvo Roy '92  
Dr. Jeffrey Russell  
Mr. Jonathan Sakai  
Dr. Raman P. Singh  
Mr. Russell P. Taub

## EXECUTIVES AND PROFESSIONALS IN THE CLASSROOM

The members of this influential group of community and business leaders visit campus to share their business knowledge and expertise.

Mr. Tony Alexander  
Dr. Dominic Bagnoli  
Mr. Christopher Cicchinelli '98  
Mr. Robert W. and Mrs. Kathleen  
(Frisk) '67) Crispin  
Mr. Mark S. Inzetta  
Mr. Michael B. '77 and Mrs. Linda  
F. Lee  
Mr. Steven E. Matthew '83  
Mrs. Susan (Pelini) '86) McGalla  
Mr. Charles D. Moore '02  
Mr. Brian L. Stafford '69  
Mr. Ted Swaldo

## PHYSICAL THERAPY ADVISORY COUNCIL

The council serves to provide a forum for the exchange of informa-

tion, concerns, and views to promote excellence within the doctor of physical therapy program.

Mr. Marshall Berkeley '09  
Mr. Jonathan Cooperman  
Dr. Richard L. Drake '72  
Ms. Erica (Hovan) '07) Fink  
Mr. Jim Hidge  
Dr. Roger Palutsis  
Mrs. Laura (Clunk) '06) Testrake  
Mr. Anton Zurbrugg '69

## REGULA CENTER ADVISORY COUNCIL

The council was established to provide expertise and leadership in the development of the Ralph and Mary Regula Center for Public Service and Civic Engagement.

Mr. Monte Ahuja  
Mr. James M. Biggar  
Mr. Robert W. Briggs  
Mrs. Jeanette Grasselli Brown  
Mr. Paul G. Clark  
Mr. Christopher M. Connor  
Mr. Robert J. DeHoff '67  
Ambassador John D. Ong  
Atty. Richard W. Pogue  
Mr. Albert B. Ratner  
Mr. J. K. Schuring  
Mrs. Sue Timken

## SPORT BUSINESS ADVISORY COUNCIL

The council was established to provide expertise and leadership from sport industry professionals to sport business majors.

Mrs. Emily Blair '03  
Ms. Kim Cox  
Mr. Jerry S. Csaki '00  
Mr. Todd S. Fleming '00  
Ms. Antonietta Gonzalez-Collins '07  
Mr. Edward F. Kiernan '96  
Ms. Bridget Huzicka '02  
Mr. Robert D. Jech '01  
Mrs. Jennifer Keurulainen '03  
Mr. Edward F. Kiernan '96  
Ms. Michelle L. Manning '00  
Mr. Mike McGee '97  
Mr. Christopher M. Motley '15  
Mr. Matthew A. Parnell '09  
Mr. Ryan M. Robbins '00  
Mr. Brent J. Stehlik '99  
Mr. Nicholas P. Volsko '08